

BEIJING

STIG ALBECK



THIS BOOK IS DOWNLOADED AT

TRCBPress.com
The Books You Want Now

FREE BOOKS PROVIDED BY BOOKBOON.COM

Beijing

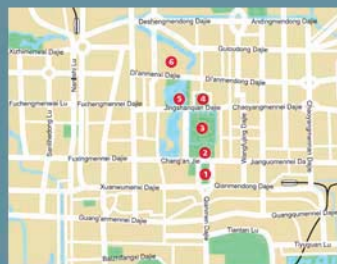
Beijing

Area Map

Metro Map

City Map

Attractions



Historical outline	6
Tour 1: Beijing	8
Tour 2: Beijing	11
Tour 3: Beijing	13
Tour 4: Beijing	16
Day Tours from Beijing	19
Facts about China	27

Beijing

© 2008 Stig Albeck & Ventus Publishing ApS

Translation: Liz Bramsen

All rights and copyright relating to the content of this book are the property of Ventus Publishing ApS, and/or its suppliers. Content from this book, may not be reproduced in any shape or form without prior written permission from Ventus Publishing ApS.

Quoting this book is allowed when clear references are made, in relation to reviews are allowed.

ISBN 978-87-7061-277-7

1st edition

Pictures and illustrations in this book are reproduced according to agreement with the following copyright owners

Stig Albeck

The stated prices and opening hours are indicative and may have be subject to change after this book was published.



Nǐ hǎo Beijing

A visit to Beijing/北京

www.bjta.gov.cn

www.cnto.org

China is known as the Middle Kingdom or the Central Kingdom and its central point is the capital, Beijing. Chinese culture has developed in the different areas of the nation over thousands of years and since the emperors took up residence in Beijing and made it the capital city, it has been favored with one fantastic building after another. Today, after the fall of the empire, tourists and the general populace are admitted to the opulent palaces, the temples and all the places where the emperors once made their way.

Beijing's vastly rich cultural heritage, from its thousand-year history to the burgeoning economic progress of today, creates an immediate and grand impression on the occasion of a visit to the capital.

One is impressed with it all – from the imperial dynasty's ancient and grandiose structures to the innumerable buildings that have shot up during recent years' explosive growth. Construction is going on everywhere, and things happen so quickly that exciting new locations have sprung up on every new trip to China.

Chinese culture and gastronomy are something most travelers look forward to, and even in the midst of newly-constructed areas, lovely spots with an authentic atmosphere are never far away. To the north, close to Beijing, the Great Wall stretches out and the mountains hide the many burial grounds of most of the earlier emperors. These, too, are things one ought to see in order to get a proper impression of the Chinese society's historical achievements.

Have a good trip!

Historical outline

The Beijing area has been inhabited for thousands of years, all the way back to the time when the Peking man lived in the area around the present city's southwestern suburb of Zhoukoudian. The area was extremely fertile and dwellings flourished over time. The formation of various states took place during the millennium up to the birth of Christ, and in the third century BC, the first Qin Emperor, Qin Shi Huang, united six states into the first major unified state in China. The city of Ji, which lay in the area of present-day Beijing, became the administrative center. Ji's military and strategic role was maintained until the close of the Tang dynasty at the beginning of the tenth century, when the Khitanes from the north conquered the city.

The Khitanes made Ji their second capital, giving the city the name Nanjing, which means 'Southern Capital'. Under the Liao dynasty of the Khitanes, from 926-1125, a number of palaces were built. The city was to be used as the starting point for further expansion towards the rest of the Chinese territory.

From 1125, the Liao dynasty was replaced by the Jin dynasty (1125-1234), which made Nanjing the new capital of their kingdom. Nanjing was renamed Zhongdu, the 'Central Capital'. Zhongdu competed with the Song dynasty to the south, which was ruled from Hangzhou.

Around the year 1150, the Jin emperor undertook a large-scale expansion of Zhongdu. Palaces and numerous large public buildings were constructed. The population of the city grew – it was during this period that it reached one million.

In 1215, the Mongolian army invaded Zhongdu, giving it the status of a provincial capital subordinated to the Mongolian capital of Kaiping. In 1271, Kubla Khan established the Yuan dynasty (1271-1368) and made Zhongdu its capital. It now became known by the Chinese name Dadu, but was

even better known by its Mongolian name, Khanbalik.

Kubla Khan's realm became the greatest in the history of the world so far. The Mongolians also conquered the southern Song dynasty, thus uniting the entire Chinese land area. For the first time, Khanbalik was the capital of all China.

Zhongdu, from the time of the Yin dynasty, was destroyed by a number of fires, and then Kubla Khan founded his new capital northeast of the old center – this was the beginning of Beijing as we know it today. The years 1267-1293 saw the building of the major share of palaces and fortifications.

In the 1360s, Mongolian rule was weakened and in 1368, the Ming army conquered Khanbalik. The city was renamed Beiping and came under Ming rulership from Nanjing. During the reign of the first two Ming emperors, Beiping was a regional center. The great city walls and The Forbidden City were built before Emperor Yonglei moved the capital there in 1421, now calling it Beijing, the Northern Capital.

Beijing's development continued with extensive building projects throughout the Ming dynasty (1368-1644). Construction activities continued under the Manchurian Qing dynasty (1644-1911) and vast gardens and parks were added. Both the Ming and Qing dynasties elaborated on the city plan that had been conceived in Khanbalik times. It was based on a central axis from south to north with the imperial palace as its absolute center.

After the collapse of the Qing dynasty in 1911, the Republic of China was established under the rule of the Koumintang. Nanjing was intended as the capital, but Beijing maintained its position – but only until 1928 when Nanjing became the official capital of the republic. Beijing returned to its former name – Beiping.

In 1937, Beijing became part of the Japanese-controlled Chinese area and became the capital – under the name Beiping. In the time after the Japanese domination from 1945-1949, it returned to its former name of Beijing.

Through the decades, social unrest had grown and in January of 1949, the Chinese rebel army entered the city. A few months later, on 1 October 1949, Mao Zedong proclaimed the establishment of the People's Republic of China from the Tianamen gate.

Both Beijing's area and its population increased notably during the last half of the 1900s, and especially in Deng Xiaoping's time much construction work was initiated. For a great number of years, development has been almost explosive with construction of new neighborhoods, development of infrastructure, new office buildings, shopping centers and more.

Ancient imperial China meets the new, modern nation in the city, which, at the time of writing, is being extensively enlarged in anticipation of the Olympic Games to be held in Beijing in 2008.

Please click the advert



Tour 1: Beijing

1. Tian'anmen Square / Tian'anmen Guangchang/天安門廣場



Tian'anmen Guangchang
www.china.org.cn/english/MATERIAL/41524.htm

www.china.org.cn/english/MATERIAL/41532.htm

**Metro: Xi Tian'anmen/Dong
Tian'anmen/Qianmen**

Tian'anmen Square is without comparison the largest open square in the world with its size of almost half a square kilometer. A mere walk around the outer area of the square would take a very long time. The Square reached its present size in the 1960s. It is now possible to gather half a million people there.

At the middle of the square is an obelisk raised in 1958 in memory of the heroes of China/人民英雄纪念碑. The square's most centrally positioned building, the mausoleum of Chairman Mao/毛主席纪念堂, also stands here. The mausoleum was opened in 1977, the year after Mao's death, and every day thousands of Chinese make their way here from every part of the enormous nation to see Mao's embalmed corpse.

At the southernmost end of the square is the great and impressive Qianmen gate/前门, which was originally the southern entrance to Beijing. The gate,

which consists of two separate buildings, was erected in 1421 and is part of Emperor Yongle's city, which also includes the Forbidden City. The southernmost building is called the Archery Tower, Jianlou, while the northernmost is the main entrance gate, built into a preserved part of the city wall.

The northern end of Tian'anmen Square is surrounded by the Great Hall of the People/Renmin Dahuitang/人民大会堂 to the west, The Historical Museum of China (Zhongguo Lishi Bowuguan) and the Revolutionary Museum of China (Zhongguo Geming Bowuguan) to the east and the Tian'anmen gate with Mao's portrait to the north.

2. The Tian'anmen gate/天安門



Tian'anmen Guangchang
www.china.org.cn/english/MATERIAL/41527.htm

Metro: Xi Tian'anmen/Dong Tian'anmen

The impressive Tian'anmen gate is one of Beijing's landmarks. The gate was originally built in the beginning of the 1400s, but the present version was built in 1651.

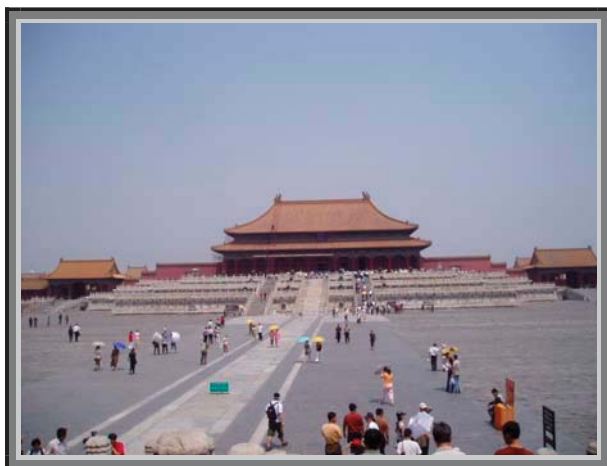
The Chinese emperors traveled once a year to Heaven's Temple, Tiantan. On their way there from the imperial palace in The Forbidden City, they stopped at the Tian'anmen gate to make offerings. The emperors would then continue by way of the centermost of the five marble bridges

that face Tian'anmen square. The emperor alone used the central bridge; everyone else had to use the other four.

On 1 October 1949, on the balcony of Tian'anmen gate, Mao was proclaimed founder of the People's Republic of China. Today, the huge portrait of Mao, which is so well-known to the world, hangs under that very balcony looking out over the square.

Today it is possible to take a guided tour of Tian'anmen Gate itself. One can go up onto the balcony and stand where Mao stood, looking out across the colossal square.

3. The Forbidden City/Zi Jin Cheng/ 紫禁城



Tian'anmen Guangchang
www.dpm.org.cn

Metro: Xi Tian'anmen/Dong Tian'anmen

The Forbidden City was the absolute center of power in China for almost 500 years. The building of the complex began in 1404 and in 1421 Ming Emperor Yongle moved in with his court. The emperors of China lived here until the republic was instituted in 1911.

In imperial times, the Forbidden City housed up to 10,000 persons, about 3,000 of which were eunuchs. Despite the numerous inhabitants, there were no problems finding space, as there were more than 8,500 rooms.

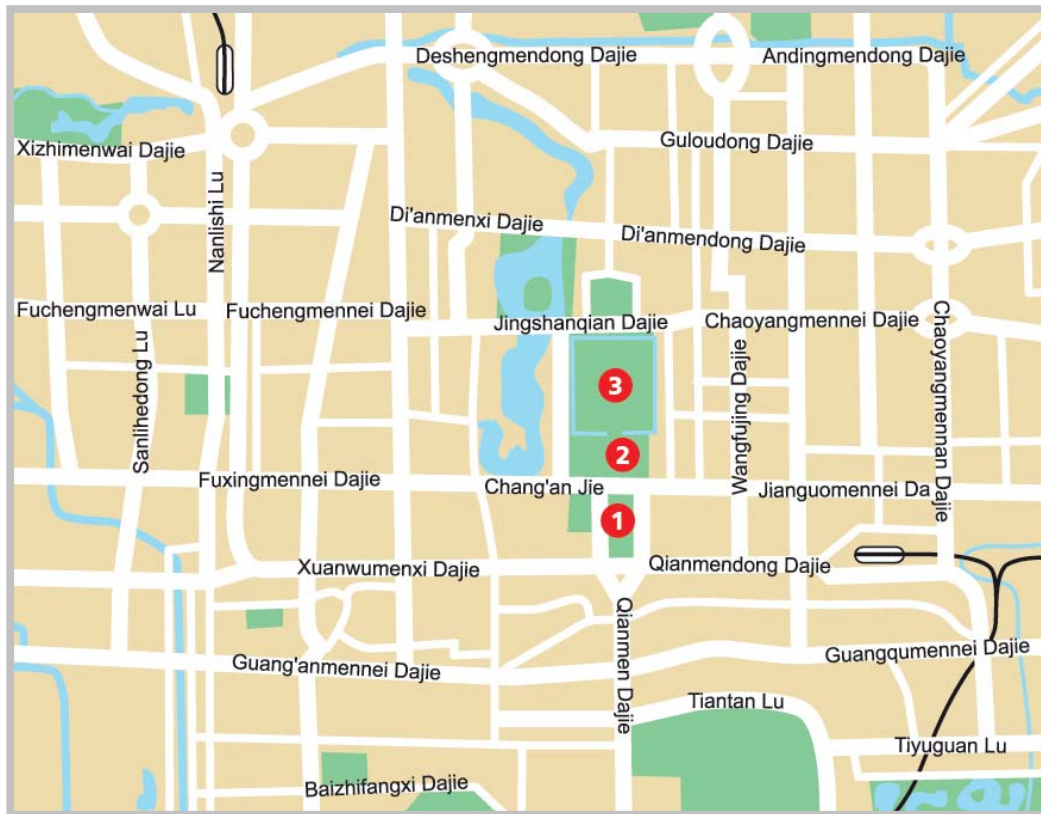
The central part of the Forbidden City is the imperial palace, Gugong, which is placed in the center of Yongle's geomantically designed city. The imperial palace is thus placed on the north-south axis of Beijing and is protected by 10-meter-high walls and a 50-meter-broad moat.

Starting from the moat at the southern end, the first thing one meets is the mighty Meridian Gate, Wumen, which is 35 meters high. Then the landscaped Golden Stream runs in front of the Gate of Highest Harmony. The gate is the entrance to the front courtyard of the complex.

In the courtyard, there are three impressive buildings, which together symbolize both the three Buddhas and the three pure gods of Taoism. The southernmost building, Tauhe Dian, is the Hall of Highest Harmony, within which the Chinese Dragon Throne is placed. It was in this building that the emperor reigned and imperial coronations took place here. The other two buildings are the Hall of Middle Harmony (Zhonghe Dian) and the Hall of Preserving Harmony (Baohe Dian), respectively.

The next building is the Gate of Heavenly Purity, Qianqingmen, which is the entrance to the imperial family's residence. The actual living quarters of the emperor and his family were located in the Palace of Heavenly Purity, Qianqing Gong, and here one can still see some of the original interior, for example, the sleeping quarters.

To the north, we find the pleasant, finely landscaped imperial gardens, after which we leave the Forbidden City by the Gate of Spiritual Courage, Shenwumen. Before exiting, however, one can take a stroll between the buildings to the east and west of the actual axis of the palace. Here one can see a museum that holds relics from the palace and The Wall of Nine Dragons, Jiulongbi.



Please click the advert

Branding

Barclays Capital is a world leading investment bank. It is also a young organisation that has grown rapidly over the last eight years. With the support of a parent bank with a balance sheet of over £520(\$983) billion, we have an unusual combination of history and dynamic youth. With offices in 22 countries and over 8,000 employees, we are continuing to expand every year.

Internships

An internship is an excellent way for you to gain an understanding of Barclays Capital. There is a range of different internship opportunities for students and they most commonly take place over the summer. Lasting about ten weeks, they are available at both Analyst and Associate level. An internship or placement may lead to an offer of permanent employment on successful completion of your degree.

www.barclayscapital.com/campusrecruitment

Tour 2: Beijing

4. Jingshan Park/景山公园



Wenjin Jie

www.china.org.cn/english/TR-e/41470.htm

Metro: Xi Tian'anmen/Dong Tian'anmen

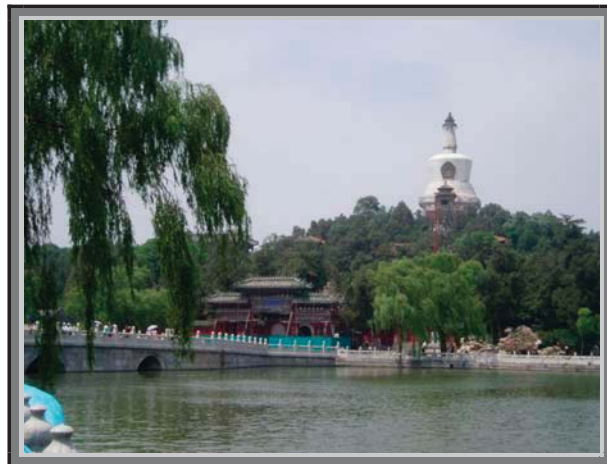
Jingshan Park, also known as Coal Mountain, lies directly north of the Forbidden City on Beijing's meridian.

The park was once the private garden of the imperial family – the hills in the park were created from soil dug out of the moat when the Forbidden City was built, and the extra earth was brought here, where heaps of coal lay at the foot of the mountain. That is how it got the nickname, Coal Mountain.

In the time of Qianlong, the park was called the Garden of 100 Fruits because of the many fruit trees that grew there. The present park was laid out later and opened to the public in 1928. At the top of Coal Mountain itself, one is rewarded with a fantastic view of the Chinese capital – especially the Forbidden City to the south and the Drum Tower to the North.

If one climbs to the summit via the eastern side, one passes the spot where the last Ming Emperor, Chongzhen, hanged himself in 1644 when an army of peasants under the leadership of Li Zicheng invaded Beijing. A new tree has now been planted to mark the spot.

5. Beihai Park/Beihai Gongyuan/ 北海公园



Wenjin Jie

www.beihaipark.com.cn

Metro: Xi Tian'anmen

Beautiful Beihai Park was the place where the Mongolian Emperor, Kublai Khan, originally had his winter palace on Jade Island, Qinghuadao.

Today, nothing remains of Kubla Khan's palace. On the spot where it stood, the 44-yard-high White Dagoba Temple, Bai Ta, was built in 1680. The White Dagoba Temple is a Buddhist shrine whose characteristic form can be seen from afar. The style is Tibetan and it was chosen on the occasion of the Dalai Lama's first visit to Beijing.

Across from Jade Island is The Round City, Tuancheng, named after its shape. In The Round City you can see the building called Chenghuang Dian; here, the 1.6-yard-high Buddha in white jade can be seen. In the park we also find the Nine Dragon Wall from 1756 (it was, however, reconstructed in 1885) and the five pavilions, all connected to each other by bridges.

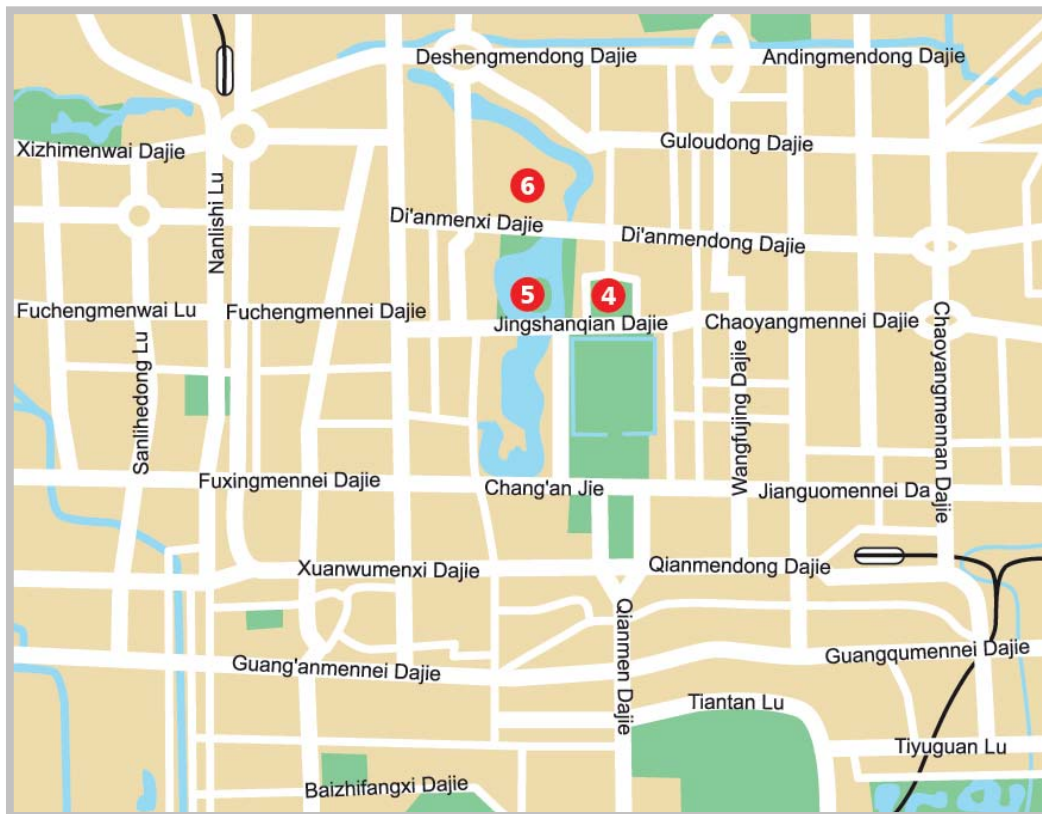
6. Prins Gong's Palace/Gong Wang Fu/恭王府



Qianhai Xijie 17

Metro: Jishui Tan

The Palace of Prince Gong is built on a 14-acre area where the emperor's relatives lived. Prince Gong was Emperor Guangxu's son, and it was he who signed the Peking convention in 1860 when faced with advancing French and English military forces. A replica of the convention is on exhibit, but the beautiful house and the finely sculpted gardens are what make the greatest impression.



Tour 3: Beijing

7. The Temple of Heaven/Tiantan/天坛



Yongdingmen Dajie

www.china.org.cn/english/MATERIAL/41478.htm

Metro: Qianmen

The Temple of Heaven was erected by Emperor Yongle in 1420. The 675-acre area is square towards the south and round towards the north, to symbolize the arch of the heavens and the earth.

The gorgeous, round, 44-yard-high Temple of Prayers for a Good Harvest, Qinian Dian, is a fantastic example of Chinese construction work. The temple was built without the use of nails. The blue tiles symbolize heaven, and the 28 pillars are the four seasons (the large centermost ones), the twelve months, and the twelve two-hour intervals into which the day was traditionally divided in China.

Towards the south of the park area is The Round Altar, Yuan Qiutan, which consists of a row of marble terraces. From the middle, the acoustics are very good – try it for yourself. The same goes for the circular echo wall of the park.

The emperor visited the Temple of Heaven twice a year and performed a number of rituals and sacrifices to wish for a good harvest and give thanks for the previous year's harvest.

Please click the advert

BRITISH AIRWAYS



8. The Underground City/Dixia Cheng/ 地下城

Xi Damochang Jie 64

Metro: Chongwen Men

The Underground City is one of Beijing's most unusual sights. A network of tunnels was dug in the 1960s to provide housing for all of the city's six million inhabitants in case of an attack. There is only access to a very small part of the actual network.

9. The National Museum of China/ Zhongguo Guojia Bowuguan/中国国家博物馆

Tian'anmen Guangchang

www.nationalmuseum.cn

Metro: Dong Tian'anmen

The National Museum of China is the common term for two earlier museums: The Revolutionary Museum of China/中国革命历史博物馆, and The Historical Museum of China/中国历史博物馆.

The Revolutionary Museum of China depicts the history of the Communist Party from 1919 until the revolution in 1949. In addition, one can see some of the results that the revolution has produced since that time.

The Historical Museum of China is in the same gigantic building as the Revolutionary Museum. The exhibits compose China's largest collection of historical finds and relics.

10. Quanjude Roast Duck Restaurant/ 全聚德

www.quanjude.com.cn

Metro: Dong Tian'anmen

Peking duck is one of the gastronomic specialties of imperial Chinese cuisine. The most traditional place to enjoy this dish is at one of the restaurants with the name: Quanjude Roast Duck Restaurant.

The food served here is especially tasty and the way in which the duck is served is an experience in itself. One even receives a numbered certificate to take home afterwards.

11. The Old Observatory/ Gu Guanxiang Tai/古观象台



Jianguo Men Dong Biaobei 2

www.china.org.cn/english/TR-e/41353.htm

Metro: Jianguo Men

Chinese Emperor Yongle had one of the defense towers on the city wall turned into an observatory in 1422. As 'Sons of Heaven', the Chinese emperors always took a great interest in astronomy. In the 1600s and 1700s, Jesuit monks came there and built an observatory, which was modern for those times.

Today, one can see some later Chinese instruments, old navigation maps, portraits of early astronomers, and other effects from the Chinese explorations of the sky.

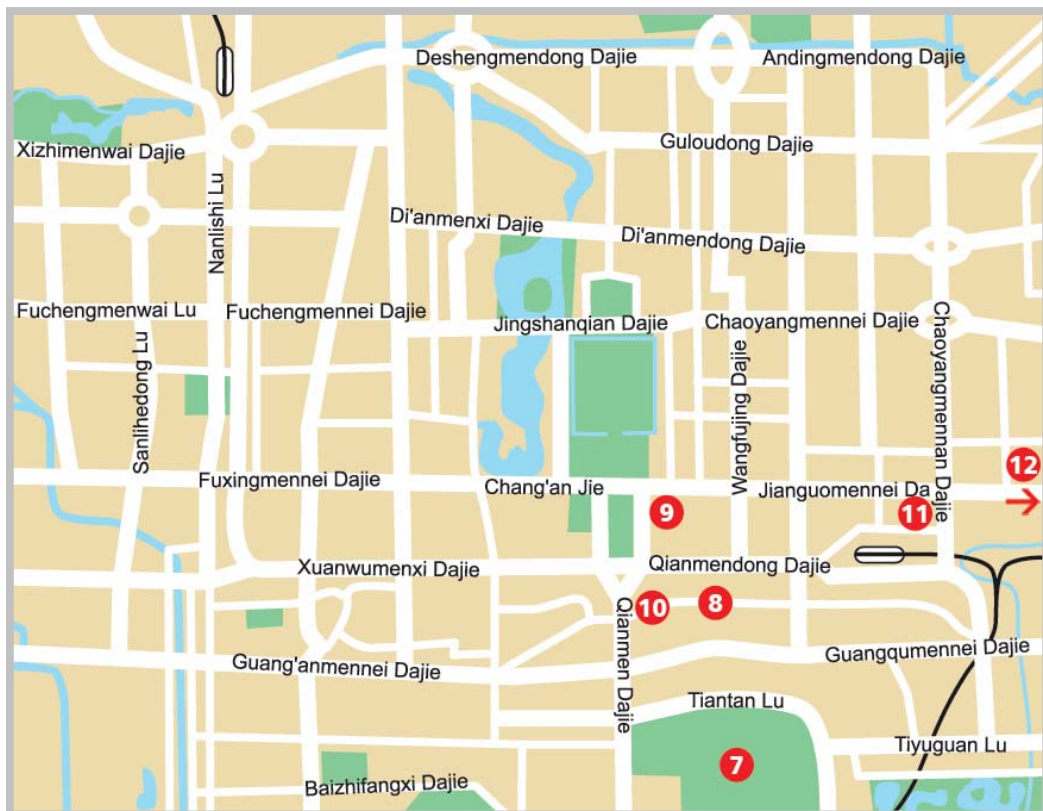
12. The Silk Market/Xiushui Shichang/ 秀水市场



Xiushui

Metro: Yong an Ti

The Silk Market is a market area where most of the traded items are of interest to tourists. It is Beijing's most well-known market, and most of the tourists that visit the Chinese capital make a stop here to find a good bargain or simply to experience the lively trading atmosphere.



Tour 4: Beijing

13. Wangfujing Dajie/王府井



Wangfujing Dajie
Metro: Wangfujing

Wangfujing Dajie is Beijing's modern shopping strip where one can get an impression of the colossal buildings, which have shot up here in such a short period. There are modern shopping centers and office buildings; yet, it is still possible to sense the traditional Chinese atmosphere.

14. Saint Joseph's Church/ Tianzhutang Dong Tang/天主堂东堂

Wangfujing Dajie 74

Metro: Wangfujing

Along modern Wangfujing Street is a Christian church with an architectural construction that differs notably from the classical Chinese style. The church was originally built in 1665 in Gothic European style. It has, however, been damaged repeatedly and thus rebuilt numerous times since then.

Explore Our Working World

BRITISH AIRWAYS 



How does it feel to be part of the working world of British Airways, at the hub of air travel in the 21st century?

British Airways is all about bringing people together, and taking them wherever they want to go. This applies as much to our employees as the 36 million people who travel with us every year. It's about offering greater diversity, more development, better training and more valuable experience. It's about investing in our employees and their futures. For it's only when they realise their full potential that we can achieve our broader business goals.

www.britishairwaysjobs.com

Please click the advert

15. The Drum Tower/Gulou/鼓楼

**Di'anmen Dajie**

www.china.org.cn/english/TR-e/41513.htm

Metro: Gulou

The Drum Tower is placed on Beijing's central axis, as is the northern city gate. The original building from 1272 burned down, as did a rebuilt version in 1297. The present gate building was erected by Yongle in 1420.

The Drum Tower is 46.7 meters high, and is named after the drums that were used here. Today, on an exciting tour up into the tower, one can see numerous drumheads. The tower also provides a good view of the many hutongs in the area.

16. The Bell Tower/Zhonglou/钟楼

**Di'anmen Dajie**

www.china.org.cn/english/TR-e/41513.htm

Metro: Gulou

The Bell Tower lies to the north of the Drum Tower. It was originally erected in 1272, but today's tower was built in 1745. It is 47.9 meters high and contains the largest historical bell in China. The bell weighs 63 tons and was made during Emperor Yongle's reign.

17. The Hutongs/胡同

Di'anmen Dajie

Metro: Gulou

The area between the Drum Tower and the Bell Tower is a good place to begin a tour through Beijing's hutongs. Hutongs are the narrow, winding streets of the original Beijing, built as a labyrinth of inner courtyards in traditional Mongolian fashion. One can go exploring on one's own or join an arranged bicycle tour.

18. The Confucian Temple/Kong Miao/ 孔庙

Guo Zi Jian Jie 13

www.china.org.cn/english/TR-e/41283.htm

Metro: Yonghegong

Kong Miao is China's next largest Confucian temple. It was built in 1306, as was the Imperial Academy, Guo Zi Jian, beside it. The buildings, which are still in use, give a good insight into Beijing's educational and temple culture.

19. The Temple for Peace and Harmony/Yonghe Gong/雍和宫



Yonghe Gong Dajie 12

Metro: Yonghegong

This temple consists of a group of buildings that were constructed in 1694. Initially, Prince Yong lived here. According to the dictates of tradition, he converted the complex to be used as a temple when he took over the throne in 1723.

The temple became Tibetan Buddhist, and in the Falun Dian building, a six-meter-high statue of the founder of the Yellow Hat Sect, Tsongkapa, can be seen. In the Tower of Ten Thousand Happinesses (Wanfu Ge) an extremely impressive 18-meter tall statue of the Future Buddha, Maitreya, is seen. The tall statue is carved out of a single piece of sandalwood.

20. The Temple of Earth/Ditan/地坛



Andingmen Wai

Metro: Yonghegong

The Altar of the Earth was a place where the Ming and Qing emperors made sacrifices to the god of the earth. Once, the large area was enclosed by a circular wall. Today, only the very beautiful western entry gate can be seen. In the area it is possible to see some of the buildings laid out by Emperor Jiajing at the time the park was constructed in 1530.

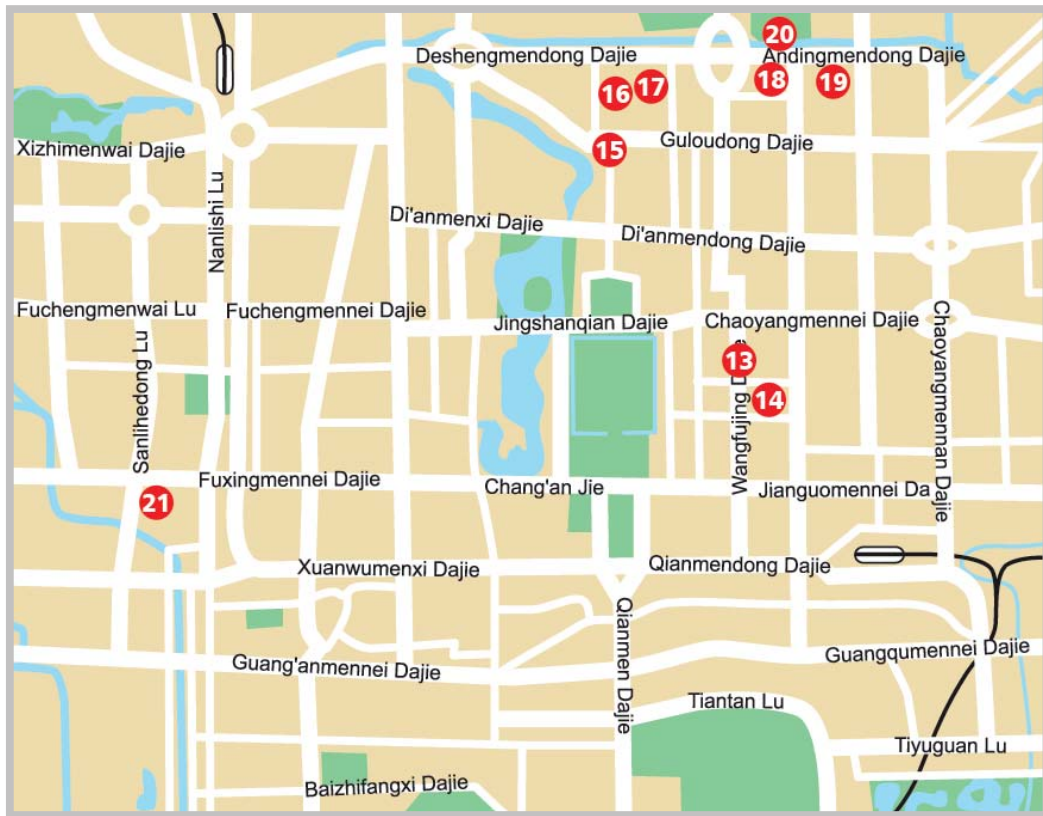
Close to the Temple of Earth, in Ditan Park, one can also visit the first Chinese wax museum. It opened in 1990 and contains models of historical Chinese personalities such as Sun Yat-sen.

21. The White Cloud Temple/Baiyun Guan/白云观

Baiyunguan Jie 6, Xibianmenwai

Metro: Muxidi/Nanlishilu

This temple is one of China's most important, historical Taoist temples. The grounds are thought to have been laid as far back as 739 and the temple is still active. The buildings in the area were built over several centuries, and they form a harmonious and welcoming oasis in the middle of the big city.



Please click the advert



Day Tours from Beijing

22. The Old Summer Palace / Yuanmingyuan/ 圆明园



16 km NW

Beijing's Old Summer Palace was originally an enormous complex covering 3.5 square kilometers (1.35 square miles), composed of palace buildings and gardens built and laid out during the 1700s and 1800s. The greater part of the many buildings was constructed in traditional Chinese style, while the most characteristic buildings were erected in European style during the reign of Emperor Qianlong, who was fond of exotic architecture.

At the close of the second Opium War in 1860, the English set fire to the entire complex, burning it almost completely to the ground. Today, only the ruins of the European palace buildings are left – the European buildings, unlike the Chinese ones, were constructed of stone and were not consumed by the fire (a few Chinese buildings survived as well, but were destroyed in 1900).

Parts of the great gardens, including some streams and lakes, have been reconstructed to look as they did in earlier times. A reconstruction of the buildings is also under consideration.

23. The Summer Palace/Yihe Yuan/ 颐和园/頤和園



18 km NW

www.china.org.cn/english/MATERIAL/41463.htm

The imperial Summer Palace with its incredibly beautiful surroundings was originally an imperial garden created during the reign of Emperor Qianlong in 1750. At the time, the garden consisted of different sections inspired by the different regions of China. The already-existing lake in the area was expanded to become the present-day Kunming Lake, a copy of the Western Lake in Hangzhou, southwest of Shanghai.

After the destruction of the old Summer Palace in 1860, the present palace complex was built according to the plan of Empress Dowager Cixi. Cixi was the actual ruler of China for many years, since she ruled on behalf of the child emperors. When they reached their majority and took over the Dragon Throne, Cixi retreated to the Summer Palace.

In the great complex, there are numerous sights to be seen. Close to the eastern entrance gate, Dongmen, lies the Garden of Virtue and Harmony, Deheyuan, and Empress Dowager Cixi's private theater. Around the theater, a number of exciting effects, for example Chinese porcelain, are exhibited.

On arriving at the banks of the Kunming lake, one has a choice view of the palace with the 60 meter high Longevity Mountain, Wanshou Shan.

Along the shore, the unique Long Corridor, Changiang, is situated. The covered walkway was built back in the middle of the 1700s when the garden was laid out. The Corridor is 728 meters long, constructed in Chinese style with no less than 14,000 pictures painted along its entire length. The pictures illustrate episodes from Chinese literature and history, among other things.

At the end of the Long Corridor is the Marble Boat. The Marble Boat was originally a pavilion built in the 1700s. After its destruction in 1860, the 36-meter boat was reconstructed by Empress Dowager Cixi. The style is European-inspired, and the uppermost parts of the boat are fashioned of wood, painted to make it look like marble.

From the central part of the Long Corridor, one can go towards the top of Longevity Mountain. On the way, one passes the Gate of Scattering Clouds/Paiyunmen and the Temple of Scattering Clouds/Paiyun dian. The next large building is the Pavilion of Buddhist Incense/Foxiangge, which, in reality, is a very large and lovely pagoda. From the pagoda there is a beautiful view of the complex and of Kunming Lake to the South Sea Lake, which is connected to the banks by the characteristic Bridge of 17 Arches/Shiqikongqiao. Behind the Foxiangge Pagoda lies the Temple of Wisdom, Zhihuihai.

24. The Ming Graves/Ming Chao Shi San Ling/明朝十三陵



50 km N

www.china.org.cn/english/kuaixun/75232.htm

North of Beijing lies the great burial ground of the Ming emperors. The place was chosen by emperor Yongle, who moved the capital from Nanjing to Beijing in 1420. Yongle began the construction work by preparing his own mausoleum, and this naturally made him the first emperor to be buried there.

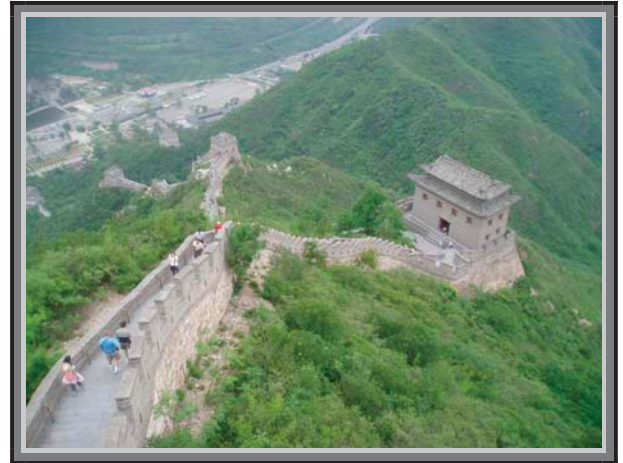
In addition to Yongle, 12 other Ming emperors are buried in the hilly area. The two first emperors of the dynasty are buried in Nanjing, but not the last one, because the Qing dynasty had taken over when he committed suicide in Beijing.

The entire burial ground was selected very carefully according to geomantic principles. The Jundu Mountains protect against evil spirits and winds from the north, and the burial area itself is placed in a peaceful valley with still waters and fertile land.

The area is surrounded by a wall, and entry to the Ming graves is via the 7 kilometer long Way of the Spirits, or Sacred Way/Shendao, which is a sight worth visiting in itself. Here, the stone guardians of the graves stand along the way in the form of human and animal statues.

Today, one can see three grave complexes: the largest, called Chang Ling, is that of Emperor Yongle, who died in 1424. Ding Ling, the underground palace grave of Emperor Zhu Yijun, who died in 1620; and the underground vaults 30 meters down, with the smallest grave – Shao Ling. Each one is greatly interesting with many temple buildings in traditional Chinese style.

25. The Great Wall of China/ Chang Cheng/长城



80 km N

www.china.org.cn/english/MATERIAL/41517.htm

The Great Wall of China is the world's largest construction. It covers a length of no less than 6,350 kilometers and passes through many different natural environments, from flat plains to mountains such as those north of Beijing.

Please click the advert

Can you imagine a
mobile phone
printed
on your skin?



Or clothes which monitor your health? Or an airliner that's too scared to crash? If you can, you're already thinking about the kinds of things we're thinking about at BT.

Which means you could be one of the forward-looking individuals we're searching for right now, with the vision to take BT fast-forward into the future.

Read more on www.btplc.com/Careercentre

The Wall was built over several periods. The oldest parts were erected at the end of the Qin dynasty in the third century BC. The next periods in which building activity was carried out were during the Han dynasty in the earliest years AD and during the 1100s under five different dynasties.

The Wall that exists today stems mainly from the time of the Ming dynasty from the 1300s to the 1600s. In comparison to earlier times, it was now built with solid stone as reinforcement on the walls and at the top.

The purpose of the Wall was to keep China's northern border safe from invasion by nomad tribes, who made attacks and carried out raids in the Chinese areas. It was erected with watchtowers along its entire length and with many entry gates.

The Wall was no longer important for the defense of the nation after armies from Manchuria invaded China and set up the Qing dynasty. Now, the country was ruled by the very ones the Wall was supposed to have kept out.

There are many arranged tours available that will take you to one or more places on the Wall. You may also choose to go there on your own. The closest places available for a visit are Badaling/八达岭 and Juyong/居庸關. If one wishes to see the Wall's eastern beginning point, it lies at Shanhaiguan/山海關, 300 kilometers from Beijing.

26. The Luguo Bridge/Lugouqiao/盧溝橋

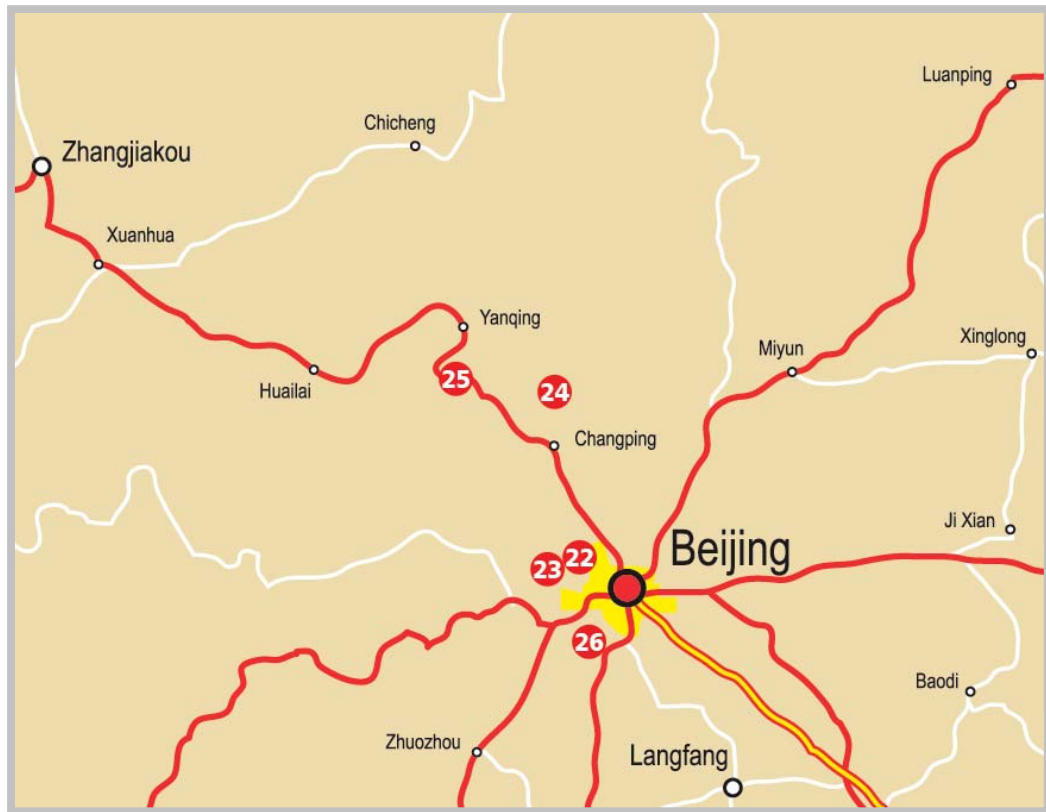
15 km SW

www.china.org.cn/english/TR-e/41515.htm

The interesting Luguo Bridge is also known as the Marco Polo Bridge. It was given this name because Marco Polo mentions it in his description of his travels to the Mongolian dynasty in Beijing in the 1200s. The bridge was built from 1189 to 1192. It is 266.5 meters long and crosses the Yongding River.

The bridge was partially destroyed by a flood in the 1600s and reconstructed immediately afterwards.

The Marco Polo Bridge is decorated with about 500 stone lions and a calligraphy made by Emperor Qianlong in the 1800s.



Please click the advert

T-Mobile

For Children in Beijing

Beijing Amusement Park (Zuo'anmennei Dajie 1:

www.bap.com.cn (Chinese)

www.bap.com.cn/en (English)

Beijing Planetarium (near Beijing Zoo)

Beijing Zoo/Beijing Dong Wu Yuan/北京動物園
(Gaoliang Qiao Xiejie 218):

www.beijingzoo.com

Chaoyang Amusement Park (Nongzhanguan Nanlu
1)

ExploraScience (The Malls, Oriental Plaza,
Dongcheng):

www.explorascience.com.cn

Milu Park/Milu Yuan/麋鹿苑 (Nan Haizi Milu
Yuan)

Shijingshan Amusement Park:

www.bs-amusement-park.com

World Park/Shijie Gongyuan/世界公園 (Fengbao
Lu 158)

Shopping in Beijing

Wangfujing, Qianmen, Dashilan, Xidanbei Dajie,
Liulichang, Dongsi

Baihuo Shopping Center (Wangfujing Dajie 255)

Friendship Store (Jianguomenwai Dajie 17)

Lufthansa Shopping Center (Liangmaqiao Lu 52,
Chaoyang-qu)

North Star Shopping Center (Anwaiianli Lu 8)

Parkson Department Store (Fuxingmennei Dajie
101)

Dangdai Shopping Center (Haidian Lu 130,
Haidian-qu)

Lafayette Department Store (Donganmen Dajie
19)

Saite Plaza (Jianguomenwai Dajie 22)

Shidu Department Store (Wangfujing Dajie 99)

Shuangan Shopping Center (Beisanhuan Xilu 38,
Haidian-qu)

The Silk Market/Xiushui Shichang (Xiushui)

Xidan Shopping Center (Xidanbei Dajie 120)

Yanjingqianmen Shopping Center
(Qianmendong Dajie 30)

Public transportation in Beijing

Beijing's metro:

www.bjsubway.com

Beijing's airport:

www.bcia.com.cn

Chinese railroads:

<http://train.chinamor.cn.net>

Timetables for trains in China:

[http://treehouse.ofb.net/guide/searchtrain
stations?lang=en](http://treehouse.ofb.net/guide/searchtrainstations?lang=en)

Metro Map



Facts about China



Political

Official name	Zhonghua Renmin Gongheguo
Capital	Beijing
Form of government	People's republic
Head of state	President Hu Jintao
Head of Government	Prime Minister Wen Jiabao
National Independence Day	1 October
Achieved independence	1 October 1949, People's Republic proclaimed
Primary religions	Confucianism, Buddhism, Taoism
Language	Chinese (primarily Mandarin and Cantonese)
Area	9 640 821 km ²
Population (2000)	1 242 612 000

Borders on

North	Kazakhstan, Mongolia, Russia
South	Nepal, India, Bhutan, Myanmar, Laos, Vietnam, South China Sea
East	North Korea, Russia, Yellow Sea, East China Sea
West	Kirghizstan, Tadsjikistan, Afghanistan, Pakistan, India

Highest mountains

Mount Everest	8 850 meters
K2	8 611 meters
Lhotse I	8 516 meters
Makalu I	8 463 meters
Cho Oyu	8 201 meters
Gasherbrum I	8 068 meters
Broad Peak	8 047 meters
Gasherbrum II	8 035 meters
Shishma Pangma	8 013 meters
Kamet	7 756 meters

Please click the advert

T-Mobile culture and values**Thinking Big...**

T-Mobile's success and growth has been phenomenal and we're adding to our ranks, with 25,000 employees nationwide. Our potential is only limited by our imagination...which, with the kind of thinkers we have around here, is pretty much limitless. Click here to find out more about our economic history, quick facts, and press releases.

...And Acting Small

As we grow, we've made a commitment to not lose sight of the reason for our success in the first place...our customers and the people who work here.

.....
www.t-mobile.com/jobs

Largest islands

Taiwan/臺灣省	35 801 km ²
Hainan/海南	33 210 km ²
Chongming	1 041 km ²
Zhoushan	503 km ²
Lantau	146 km ²
Quemoy	145 km ²
Shangchuan	137 km ²

Largest lakes

Qinghai	4 635 km ²
Xingkai Hu (Khanka)*	4 190 km ²
Poyang	3 585 km ²
Dongting Hu	2 820 km ²
Tai Hu	2 250 km ²
Chao Hu	760 km ²
Qiandao	573 km ²
Bayyangdian	366 km ²
Kunming Hu	298 km ²
Dagze Co	260 km ²

* partially located in Russia

Longest rivers*

Chang Jiang (Yangtze)	6 300 km
Huang He (The Yellow River)	5 464 km
Heilongjiang (Amur)	4 444 km
Mekong	4 350 km
Erqisi (Irtysj)	4 228 km
Indus	3 200 km
Saluen	2 980 km
Xi Jiang (Pärlfloden)	2 197 km
Xijiang	1 930 km
Hanshui	1 532 km

* Some rivers flow in part through other countries than China

Largest cities (2002)

Shanghai/上海	9 031 000
Beijing/北京	7 130 000
Hong Kong/香港	7 000 000
Tianjin/天津	4 345 000
Wuhan/武漢	3 958 000
Shenyang/沈阳	3 453 000
Guangzhou/廣州	3 434 000
Harbin/哈爾濱	2 765 000
Xi'an/西安	2 657 000
Chongqing/重慶	2 312 000

Please click the advert



Administrative divisions		
Provinces	Area	Capital
Anhui/安徽	139 400 km ²	Hefei
Fujian/福建	121 400 km ²	Fuzhou
Gansu/甘肅	454 000 km ²	Lanzhou
Guangdong/广东	177 900 km ²	Guangzhou
Guizhou/貴州	176 100 km ²	Guiyang
Hainan/海南	33 920 km ²	Haikou
Hebei/河北	187 700 km ²	Shijiazhuang
Heilongjiang/黑龍江省	460 000 km ²	Harbin
Henan/河南	167 000 km ²	Zhengzhou
Hubei/湖北	185 000 km ²	Wuhan
Hunan/湖南	211 800 km ²	Changsha
Jiangsu/江蘇	102 600 km ²	Nanjing
Jiangxi/江西	166 900 km ²	Nanchang
Jilin/吉林	187 400 km ²	Changchun
Liaoning/遼寧	145 900 km ²	Shenyang
Qinghai/青海	721 000 km ²	Xining
Shaanxi/陝西	205 800 km ²	Xi'an
Shandong/山東	156 700 km ²	Jinan
Shanxi/山西	156 800 km ²	Taiyuan
Sichuan/四川	485 000 km ²	Chengdu
Taiwan/臺灣省	36 200 km ²	Taipei
Yunnan/雲南	394 100 km ²	Kunming
Zhejiang/浙江	101 800 km ²	Hangzhou
Autonomous regions	Area	Capital
Guangxi/广西	236 700 km ²	Nanning
Nei Menggu (Inner Mongolia)/ 內蒙古自治區	1 183 000 km ²	Hohhot
Ningxia/宁夏	66 000 km ²	Yinchuan
Xinjiang/新疆	1 660 000 km ²	Ürümqi
Xizang (Tibet)/ 西藏自治區	1 228 400 km ²	Lhasa

City regions	Area	Capital
Beijing/北京市	16 800 km ²	Beijing
Chongqing/重慶市	82 300 km ²	Yuzhong Qu
Shanghai/上海市	7 000 km ²	Shanghai
Tianjin/天津市	11 900 km ²	Tianjin
Special administrative regions	Area	Capital
Xianggang (Hong Kong)/ 香港特別行政區	1 100 km ²	-
Aomen (Macao)/ 澳門特別行政區	29 km ²	-

De facto leaders of China since 1949

Mao Zedong	1943-1976
Hua Guofeng	1976-1981
Deng Xiaoping	1981-1989
Jiang Zemin	1989-2004
Hu Jintao	2004-

Heads of state since 1949

Mao Zedong	1949-1959
Liu Shaoqi	1959-1968
Soong Ching-ling	1968-1972, 1981-1981
Dong Biwu	1968-1975
Zhu De	1975-1976
Ye Jianying	1978-1981, 1981-1983
Li Xiannian	1983-1988
Yang Shangkun	1988-1993
Jiang Zemin	1993-2003
Hu Jintao	2003-

Prime Ministers since 1949

Zhou Enlai	1949-1976
Hua Guofeng	1976-1980
Zhao Ziyang	1980-1987
Li Peng	1987-1998
Zhu Rongji	1998-2003
Wen Jiabao	2003-

National holidays and remembrance days

1-2 January	New Year
1-3 May	1 st of May celebrations
1 July	Founding of the Communist Party
1 August	Army Day
1-3 October	National Independence Day celebrations

Various facts

Currency	Renminbi/Yuan
Currency code	RMB/CNY
Time zone	China Time/EST (UTC+8)
International postal code	PRC
Internet domain	.cn
Country code	+86

Climate - Beijing	Mean temperature (°C/°F)	Precipitation (millimetres/inches)
January	-4.6/23.7	4/0.2
February	-1.8/28.8	5/0.2
March	4.7/40.5	8/0.3
April	13.6/56.5	18/0.7
May	20.0/68.0	33/1.3
June	24.4/75.9	78/3.1
July	26.0/78.8	224/8.8
August	24.7/76.5	170/6.7
September	19.8/67.6	58/2.3
October	12.6/54.7	18/0.7
November	3.9/39.0	9/0.4
December	-2.6/27.3	3/0.1

Source: WorldClimate (www.worldclimate.com)



Please click the advert

Branding

Barclays Capital is a world leading investment bank. It is also a young organisation that has grown rapidly over the last eight years. With the support of a parent bank with a balance sheet of over £520(\$983) billion, we have an unusual combination of history and dynamic youth. With offices in 22 countries and over 8,000 employees, we are continuing to expand every year.

Internships

An internship is an excellent way for you to gain an understanding of Barclays Capital. There is a range of different internship opportunities for students and they most commonly take place over the summer. Lasting about ten weeks, they are available at both Analyst and Associate level. An internship or placement may lead to an offer of permanent employment on successful completion of your degree.

www.barclayscapital.com/campusrecruitment

Climate - Hong Kong	Mean temperature (°C/°F)	Precipitation (millimetres/inches)
January	16.2/61.2	27/1.1
February	16.1/61.0	44/1.7
March	18.4/65.1	75/2.9
April	22.1/71.8	140/5.5
May	26.1/79.0	298/11.7
June	28.0/82.4	399/15.7
July	28.7/83.7	371/14.6
August	28.6/83.5	377/14.8
September	27.9/82.2	297/11.7
October	25.4/77.7	119/4.7
November	21.8/71.2	38/1.5
December	17.7/63.9	25/1.0

Source: WorldClimate (www.worldclimate.com)

Climate - Harbin	Mean temperature (°C/°F)	Precipitation (millimetres/inches)
January	-19.6/-3.2	4/0.2
February	-15.4/4.3	5/0.2
March	-5.2/22.6	11/0.4
April	6.0/42.8	22/0.9
May	14.1/57.4	43/1.7
June	19.8/67.6	89/3.5
July	23.0/73.4	156/6.1
August	21.3/70.3	117/4.6
September	14.3/57.7	61/2.4
October	5.6/42.1	28/1.1
November	-6.1/21.0	10/0.4
December	-16.0/3.2	5/0.2

Source: WorldClimate (www.worldclimate.com)

Climate - Ürümqi	Mean temperature (°C/°F)	Precipitation (millimetres/inches)
January	-14.4/6.1	8/0.3
February	-12.1/10.2	10/0.4
March	-1.8/28.8	18/0.7
April	9.9/49.8	30/1.2
May	17.0/62.6	31/1.2
June	21.8/71.2	34/1.4
July	24.1/75.4	21/0.8
August	22.8/73.0	21/0.8
September	16.6/61.9	24/0.9
October	7.4/45.3	26/1.0
November	-3.6/25.5	19/0.7
December	-11.9/10.6	12/0.5

Source: WorldClimate (www.worldclimate.com)

Climate - Lhasa	Mean temperature (°C/°F)	Precipitation (millimetres/inches)
January	-1.6/29.1	0/0.0
February	1.2/34.2	3/0.1
March	4.8/40.6	4/0.1
April	8.4/47.1	6/0.2
May	12.4/54.3	24/0.9
June	16.0/60.8	72/2.8
July	15.5/59.9	132/5.2
August	14.7/58.5	128/5.0
September	13.1/55.6	58/2.3
October	8.5/47.3	9/0.4
November	2.6/36.7	1/0.1
December	-1.1/30.0	0/0.0

Source: WorldClimate (www.worldclimate.com)

Phrase book

Courtesy phrases

Greetings	問候
Good morning	早安
Good day	祝你愉快
Good afternoon	午安
Good night	晚安
Hi/Hey	嗨!
farewell	再會
See you	再見
Others	其他
Thanks	謝謝
Thanks for the help	謝謝你的幫助
Yes	是
No	不
Okay	好
Be so good	非常好
Be so kind	真是太好了
Sorry	對不起
My name is.....	我叫...。
What is your name?	你叫什麼名字?

Question (Inquiring) words

What...?	什麼...?
Where...?	哪裡...?
When...?	何時...?
Who...?	誰...?
How...?	如何...?
Why...?	為什麼...?

Find way

To the right	向右
To the left	向左
Straight on	直行
Back	向後

Where is?	...在哪裡?
Can you show the way to.....?	你能指給我去...的路嗎?
Where am I/we at present?	現在我/我們在哪裡?
How do I reach....?	我如何到達...?
how far is it to.....?	到...有多遠?
Where is the nearest station?	最近的車站在哪裡?
Address	地址
What is the address?	地址是哪裡?

Tourist in the city

Have you a city map?	你有城市地圖嗎?
What shall I see here in this city?	在這個城市裏我應該遊覽什麼?
Can you recommend a sight seeing tour?	你能推薦一個觀光旅行嗎?

Visit to the toilet

Visit to the toilet	去廁所
Toilet	廁所
Have you a toilet?	有廁所嗎?
Do you have some more toilet paper?	還有廁紙嗎?
Can I change the toilet?	我可以換廁所嗎?

Transport for the trip

Railway	鐵路
Underground railway	地下鐵路
Train	火車
Till what time does the train run?	火車要到什麼時間發車?
Time table	時間表
Station (train)	車站 (火車)

Bus and Tram

	公共汽車和電車
Tram	電車
Bus	公共汽車
Till what time does the bus/tram run....?	公共汽車/電車要到什麼時間發車?
At what time is the last bus/tram?	最後一班公共汽車/電車是什麼時間?
Station (bus)	車站 (公共汽車)
Stop	車站

Airway

	空中航線
Airway	空中航線
Airport	飛機場
Check-in	辦理登機手續
Passport	護照

Ship

	船
Ferry	渡口
Port	港口

Automobile

	汽車
Motorcar	汽車
Car rental	汽車租賃
Driving License	駕駛證
I would like to hire a....	我想租用...。
Have you a children's seat?	有兒童座椅嗎?
Does it run on petrol or diesel?	它使用的是汽油還是柴油?
Parking space	停車位
Multi-storeyed car park	多層停車場

Taxi

	出租車
Taxi	出租車
Drive me to this address	請送我到這個位址
I shall go to.....	我將去.....。
How much is it by taxi to?	乘出租車去要多少錢?

Please click the advert


BRITISH AIRWAYS

General

General	一般
Cycle	自行車
Motorcycle	摩托車
Arrival/arrival time	到達/到達時間
Departure/departure time	離開/離開時間
Baggage	行李
Baggage locker	行李暫存箱

Entertainment

Cinema	電影院
Theatre	戲院
Match	比賽
Concert	音樂會
Park	公園
Circus	馬戲團
Museum	博物館
Amusement park	遊樂場
Casino	娛樂場
Disquothé	Disquothé
Night club	夜總會
Aquarium	水族館
Zoological garden	動物公園

Tickets

Adult	成人
Child	兒童
Pensioner	退養人員
Student	學生
Can I get a ticket?	我可以買一張票嗎?
Can I get a daily ticket?	我可以買一張日票嗎?

In the hotel

I/we have a reservation	我/我們已經預訂了房間。
The name is....	名字是...。

Single room	單人房
Double room	雙人房
What is the room number?	房間號碼是多少?
Which floor?	哪一層?
Where is the elevator?	電梯在哪?
No smoking	禁止吸煙
Smoking	抽煙
Have you a vacant room?	有空房間嗎?
What is the cost of a single-/double room?	單人房/雙人房的費用是多少?
Can I order for an extra bed?	可以加床嗎?
Have you a baby cot?	有嬰兒床嗎?
Where is the breakfast?	哪里吃早餐?
When is the breakfast?	何時吃早餐?
When shall we check in?	何時辦理登記手續?
Where can I park?	哪里可以停車?
Can I call for a taxi?	我可以叫輛出租車嗎?
Have you a card with the hotel's address?	你有帶有旅館位址的卡片嗎?
Have you a security locker?	你有保險箱嗎?
Is there a swimming pool?	這裏有游泳池嗎?
Can I ask for a wake up call?	我可以請求喚醒服務嗎?
Can I borrow an ironbox/-board?	我可以借一個鐵盒/板嗎?
Can I borrow a hair drier?	我可以借一個電吹風嗎?
Can I keep my baggage?	我可以保存我的行李嗎?
Can I request for extra toilet paper?	我可以多要些廁紙嗎?

On shopping

Shopping centre	購物中心
Departmental stores	百貨商店
Main shopping area	主要購物區
Pedestrian street	行人街道
Is it available in large size?	它有大號的嗎?
Is it available in small size?	它有小號的嗎?
What is the cost of this/that?	這件/那件多少錢?
Do you have this/ these in my size?	這件/那件有我穿的型號嗎?
Can you pack this in a gift wrap?	你可以將此包裝成禮品包裝嗎?
Do you accept credit card?	你接受信用卡嗎?
When do you close?	什麼時候打烊??
Open	營業
Closed	停止營業

In the restaurant/café

Breakfast	早餐
Lunch	午餐
Supper	晚餐
May I see the menu card?	我可以看看功能表嗎?
May I see the liquor card?	我可以看看酒單嗎?
Menu for the children	兒童菜單
Vegetarian	蔬食
Well done	全熟
Medium	五分熟
Red (rare)	全生
It must not be very strong	千萬不要太濃烈
I cannot bear....	我不能忍受....
Bill	帳單
May I pay?	我可以付賬嗎?

Can I pay with the credit card?
我可以使用信用卡付賬嗎?

From the menu card

Starters	菜單上 第一道菜
Main course	主菜
Desserts	甜點
Fish	魚
Shell fish	貝類海鮮
Poultry	家禽
Chicken	雞肉
Duck	鴨子
Goose	鵝肉
Turkey	火雞
Pork	豬肉
Beef	牛肉
Veal	小牛肉
Lamb	小羊
Bread	麵包
Butter	奶油
Egg	蛋
Yoghurt	酸乳酪
Soup	湯
Salad	沙拉
Sandwich	三明治
Sausages	臘腸
Hotdog	熱狗
Pizza	比薩餅
Hamburger	漢堡
French fries	薯條
Cheese	乳酪
Ice	冰
Cake	蛋糕
Sugar	糖

Beverages

Milk	飲料
Mineral water	奶
Juice	礦泉水
Soda water	汁
Without ice	蘇打水
Coffee	不加冰
Tea	咖啡
Cocoa	茶
Beer	可哥飲料
White wine	啤酒
Red wine	白葡萄酒
Champagne	紅葡萄酒
Liquor	檳酒
Spirits	酒
	烈酒

Service

Knife	服務
Fork	小刀
Spoon	叉子
Teaspoon	匙
chop stick	茶匙
Glass	筷子
Plate	玻璃杯
Napkin	盤子
	餐巾紙

Bank, post, internet and telephone**Bank and money**

Bank	銀行和金錢
Where is a bank?	銀行
Automatic teller machine	銀行在哪里?
Where can I draw money?	自動櫃員機
Change money	哪里可以取錢?
Where can I change currency?	貨幣兌換
	哪里可以兌換貨幣?

What is the rate of exchange?
兌換率是多少?

Post

Post office	郵政
Where is the post office?	郵局
Post box	郵局在哪里?
Where is a post box?	信箱
Stamp	信箱在哪里?
Do you have an envelope?	郵票
	你有信封嗎?

Internet

Where is the internet café?	網際網路
Do you have internet, which I can use?	網咖在哪里?
	你有我可以使用的網際網路嗎?

Telephone

Can I borrow a telephone?	電話
How do I ring abroad?	能借電話用一下嗎?
How much does it cost to ring to...?	如何撥打國外電話?
	打電話到...的費用是多少?

Alarm and Sickness**Police and Fire**

Help	員警和火災
I have been robbed	救命
Telephone the police	我被搶劫了
Police station	打電話給員警
Theft/stop the thief	警察局
Fire/ the burner	盜竊/捉賊
Ring up the fire fighting service	火災/火爐
	打電話給消防勤務

Doctor and pharmacy	醫生和藥房
Ring for an ambulance	打電話叫救護車
Can you fix up an appointment with the doctor for me?	你能為我預約一下醫生嗎?
Hospital	醫院
Doctor	醫生
Pharmacy	藥房
Where is the pharmacy?	藥房在哪里?
I have pain	我感到疼痛
I have pain here	我感到這裏疼痛
I have pain in the head	我頭部疼痛
I have nausea	我感到惡心
I have diarrhoea	我腹瀉
I have pain in the stomach	我胃部疼痛
Have you pills for head ache?	你有治療頭疼的藥丸嗎?
Have you pills for diarrhoea?	你有治療腹瀉的藥丸嗎?
Tablets	藥片

Dentist	牙醫
Can you fix up an appointment with the dentist for me?	你能為我預約一下牙醫嗎?
I have tooth ache	我牙痛

Numbers

Zero	零
One	一
Two	二
Three	三
Four	四
Five	五
Six	六
Seven	七

Eight	八
Nine	九
Ten	十
Twenty	二十
Thirty	三十
Fourty	四十
Fifty	五十
Sixty	六十
Seventy	七十
Eighty	八十
Ninety	九十
Hundred	百
Thousand	千
Million	百萬

Calendar and time

Days	日
Monday	星期一
Tuesday	星期二
Wednesday	星期三
Thursday	星期四
Friday	星期五
Saturday	星期六
Sunday	星期天
Yesterday	昨天
Today	今天
Tomorrow	明天
Day after tomorrow	後天

Months

January	一月
February	二月
March	三月
April	四月
May	五月
June	六月
July	七月
August	八月
September	九月
October	十月
November	十一月
December	十二月

Time

What is the time?	幾點鐘？
The time is quarter past....	...點鐘過一刻
The time is half past....	...點半
The time is quarter to.....	...點差一刻

Explore Our Working World

BRITISH AIRWAYS 

How does it feel to be part of the working world of British Airways, at the hub of air travel in the 21st century?

British Airways is all about bringing people together, and taking them wherever they want to go. This applies as much to our employees as the 36 million people who travel with us every year. It's about offering greater diversity, more development, better training and more valuable experience. It's about investing in our employees and their futures. For it's only when they realise their full potential that we can achieve our broader business goals.

www.britishairwaysjobs.com

Please click the advert

A man wearing a wide-brimmed hat, a tropical print short-sleeved shirt, and shorts stands on a brick-paved platform next to a silver train car. He is looking towards the right. The background shows a clear blue sky and the side of the train with several windows.

About the Author

Stig Albeck (1969) is the author behind the travel books at OnLibri.com. Stig writes the way you travel the destinations!

The books often take their departure in the world's most exhilarating cities and evolve to the attractions and sights in their vicinity. Stig is a devoted traveller and a passionate explorer which brings him around the world several times each year to search for new exciting destinations.

Going to big cities or more adventurous destinations, Stig writes his travel guides to help and inspire readers to get the full benefit of their destination of choice.

Travelling is about enjoying the moment, but also about taking home memories and gaining new knowledge. No matter how far or near by the destination might be there sure are great experiences waiting to be unveiled.

Stig holds a masters degree in marketing and tourism from Copenhagen Business School in Denmark. He has been working in the tourism industry and with global marketing of tourist destinations.

If you have questions or perhaps made a discovery that you would like to share, then send Stig an email to travelstig@gmail.com (if you attach photos you agree to letting us use these for future travel guides).

Stig offers lectures on his travel experiences, or any specific tour that you might be about to head out for. To learn more about things like touring Australia, visiting the Mongolian capital Ulan Bator, or enjoying a fresh smoked omul at the Lake Baikal in February, visit www.stigalbeck.com.

Bonne Voyage!

Download free books at BookBoon.com

The logo for OnLibri.com, featuring the text "onLibri.com" in a white, sans-serif font. The "o" is lowercase and the "n" is lowercase, while "Libri" is uppercase and "com" is lowercase. A red curved line is positioned above the "i" in "Libri".