

# HEBEI PROVINCE

Area: 187,700 sq km

Population: 67.694 million

Longitude: 113°27'-119°50'E

Latitude: 36°03'-42°40' N

Elevation: 1,200-1,500m

Location: North of the North China Plain

Climate: Temperate continental monsoon climate, with four distinctive seasons.

- Temperature: Below 3°C in January and 18°C-27°C in July

- Average annual precipitation: 300-800 mm

Topography:

- Consisting of three geomorphological structures: Bashang Plateau with an elevation of 1,200-1,500m, accounting for 8.5 percent of the province's total area; Yanshan and Taihangshan mountains, with an elevation of less



Shanhaiguan Pass of the Great Wall

C

144



Chengde Royal Summer Resort

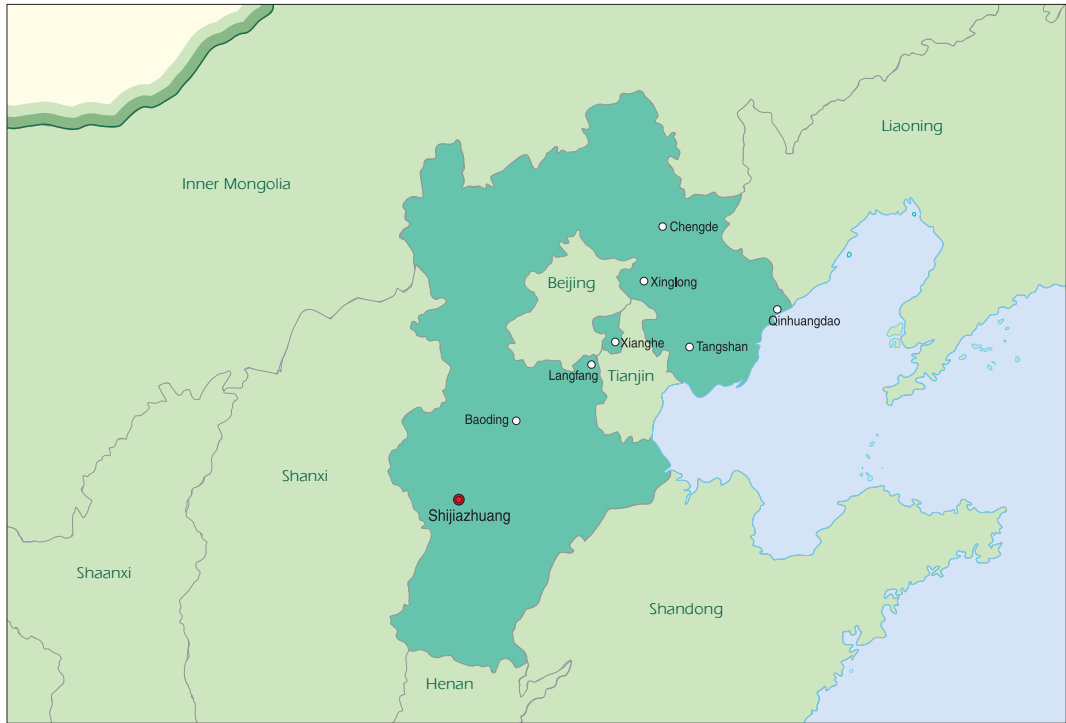


than 2,000m, forming 48.1 percent; and Hebei Plain, a part of the North China Plain, lying below 50m above sea level, making up 43.4 percent

- A terrain descending from northwest to southeast

Hebei is the only province in China that contains plateau, mountains, hills, plain, lakes and beaches. It is home to 304 ancient ruins and building complexes, including 58 cultural heritage sites under state-level protection. Chengde Royal Summer Resort, Shanhaiguan Pass, Beidaihe Summer Resort, Eastern and Western Qing Tombs are among them.

It faces the Bohai Sea on the east, having a coastline of 487 km.



## SHIJIAZHUANG

---

Area: 15,848 sq km

Population: 9.105 million

Longitude: 113°30'-115°20' E Latitude: 37°27'- 38°47' N

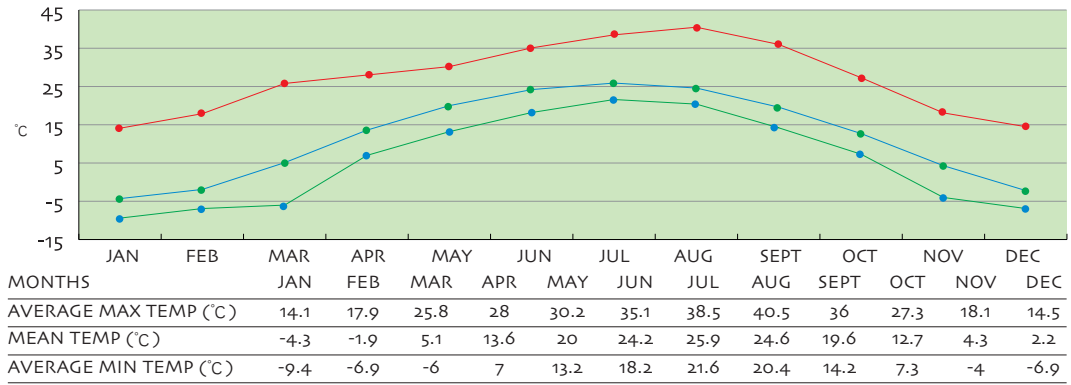
Location: In the middle south of Hebei, and 283 km from Beijing

Shijiazhuang, lying on the eastern fringe of the Eurasian Continent, has a warm-temperate continental monsoon climate featuring four distinctive seasons.

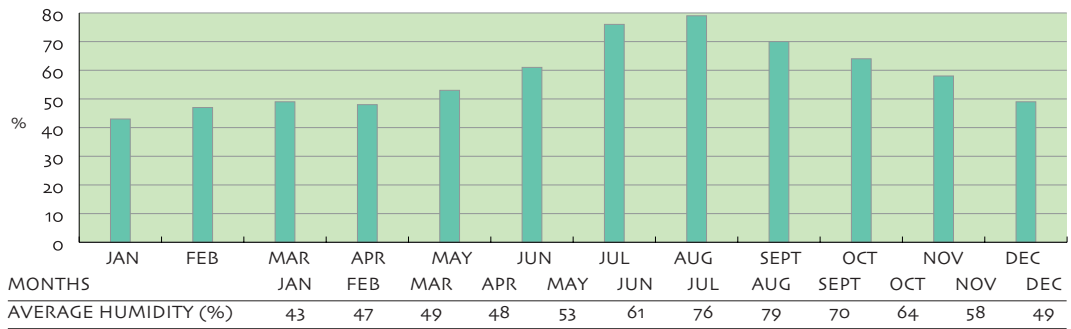
Shijiazhuang, capital of Hebei Province, is an important railway, highway, postal and communication hub in China. The Shijiazhuang Railway Station is one of the country's three major marshalling stations and the intersection of three rail lines. Multiple expressways and national highways crisscross the city, leading to all directions. Shijiazhuang Airport has opened more than 20 domestic air routes.

Shijiazhuang has more than 1,200 heritage sites and several national and provincial scenic areas. Zhengding, under its jurisdiction is a state-level city of historical and cultural interest.

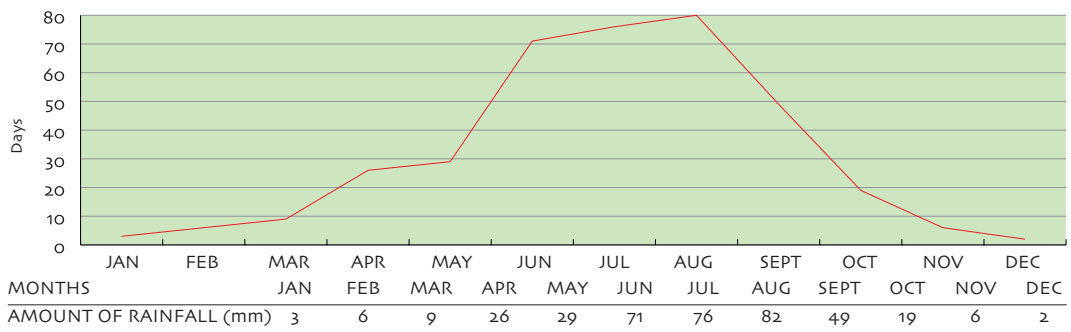
● AVERAGE MAX TEMP ● MEAN MONTHLY TEMP ● AVERAGE MIN TEMP



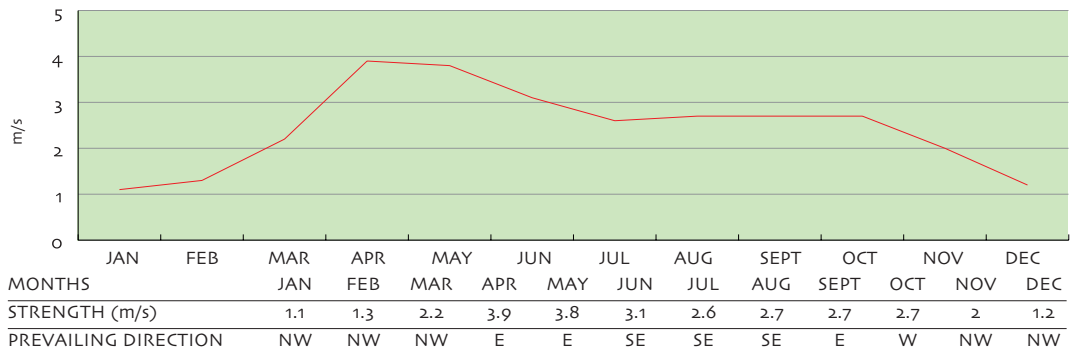
● HUMIDITY



● AMOUNT OF RAINFALL



● PREVAILING WIND DIRECTION AND AVERAGE STRENGTH





Hebei Athletics Center Track and Field Court

C

148

## Hebei Athletics Center Track and Field Training Area

Facility for: Track and field

Facility description:

- 400m standard synthetic track with 8 lanes
- Weight training room, showers and toilets

## Hebei Shooting Center Shooting Range

Facility for: Shooting

Facility description:

- 50m shooting range with 62 shooting positions
- 25m shooting range with 12 groups of targets
- 10m shooting range with 56 shooting positions
- 10m running target shooting range with 3 traps
- Two clay target shooting ranges
- Changing rooms and toilets



# BAODING

Area: 22,000 sq km

Population: 10.7 million

Location: In the central part of Hebei Province

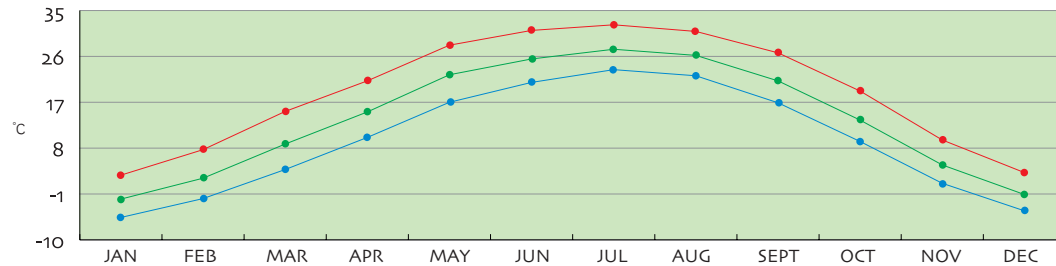
Average annual temperature: 12.7°C.

Baoding enjoys a convenient traffic network accessible from all direction. Beijing-Guangzhou Railway and Beijing-Shenzhen Expressway run through it from north to south, while Shenmu-Huanghua Railway and Tianjin-Baoding Expressway pass it from east to west.

Baoding, with a long history, is the homeland of the legendary Emperor Yao in ancient times. It also has three national top-class scenic sites, including the Western Qing Tombs, Baili Valley and Baiyangdian Lake, and two national second-class scenic spots-Zhili Provincial Governor's Office Museum and Mancheng Han Tombs. The Western Qing Tombs have been inscribed on the World Cultural Heritage List.

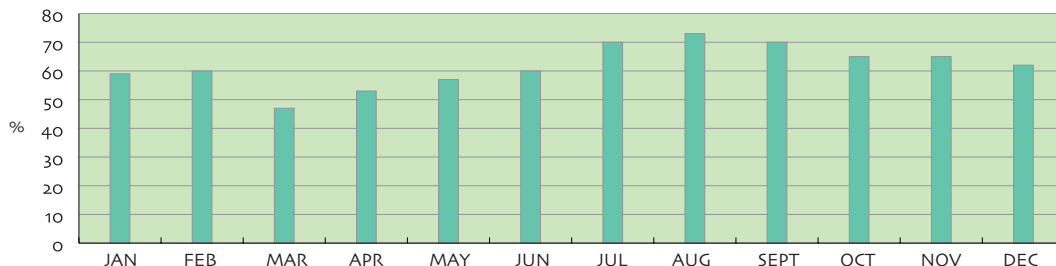


● AVERAGE MAX TEMP ● MEAN MONTHLY TEMP ● AVERAGE MIN TEMP



MONTHS	JAN	FEB	MAR	APR	MAY	JUN	JUL	AUG	SEPT	OCT	NOV	DEC
AVERAGE MAX TEMP (°C)	2.7	7.7	15.2	21.2	28.2	31.1	32.2	30.9	26.7	19.2	9.6	3.2
MEAN TEMP (°C)	-2	2.1	8.8	15.1	22.4	25.5	27.4	26.2	21.2	13.5	4.7	-1.1
AVERAGE MIN TEMP (°C)	-5.6	-1.9	3.8	10.1	17	20.9	23.4	22.2	16.9	3.3	1.1	-4.3

● HUMIDITY



MONTHS	JAN	FEB	MAR	APR	MAY	JUN	JUL	AUG	SEPT	OCT	NOV	DEC
AVERAGE HUMIDITY (%)	59	60	47	53	57	60	70	73	70	65	65	62



## Hebei University Stadium

Facility for: Track and field

Facility description:

- 125,000 sq m in total area
- Three 400m synthetic track fields
- 21m x 140m indoor training hall
- Weight training room, showers and toilets

## Hebei Swimming and Diving Center Diving Hall

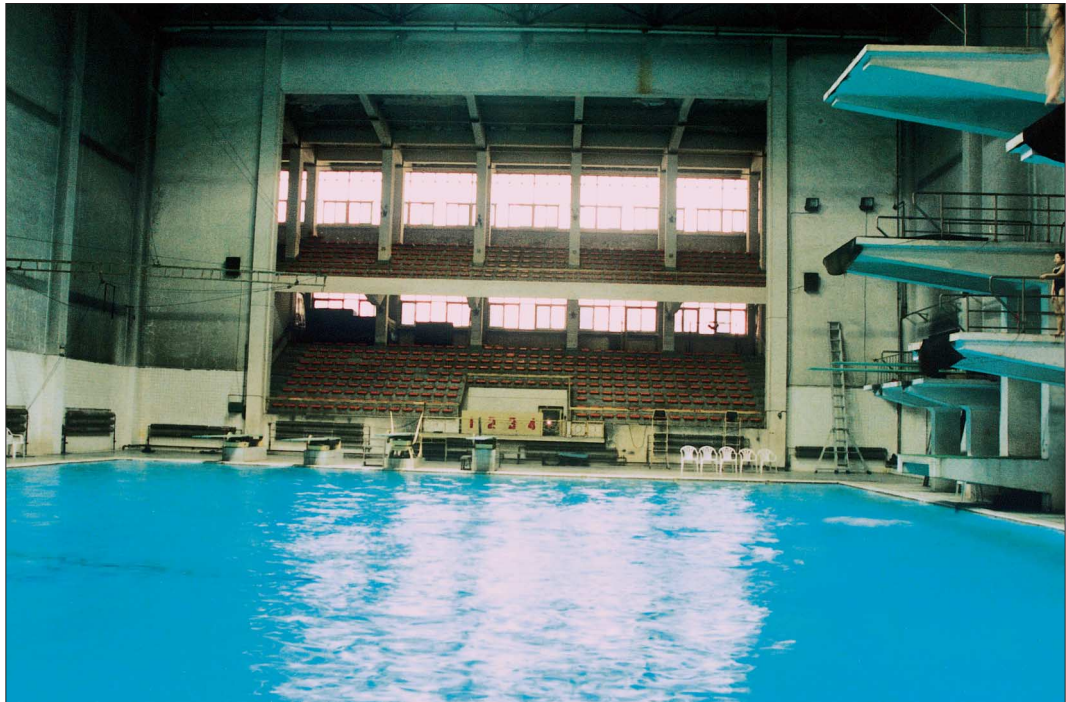
Facility for: Diving

Facility description:

- 2,762.5 sq m in floor space
- One 25m x 20m x 5m diving pool
- Four 1m and 3m springboards
- Two 1m diving platforms, one 3m platform, two 5m platforms, one 7.5m platform and one 10m platform
- Weight training room, showers, changing rooms and toilets

C

150



Hebei Swimming and Diving Center Diving Hall



# QINHUANGDAO

Area: 7,812.4 sq km

Population: 2.7 million

Longitude: 118°33'-119°51'E Latitude: 39°24'-40°37'N

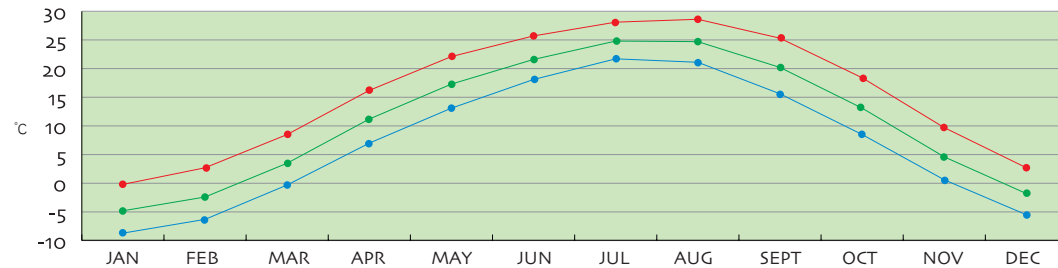
Location: Northeast of Hebei Province

Qinhuangdao is an important port city in China, serving as a major access to the sea of the northern, northeastern and northwestern regions.

The city has a beautiful natural scenery and pleasant weather. The Great Wall stretches across it. Shanhaiguan Pass and Beidaihe Summer Resort are rated among the nation's top 40 tourist sites.

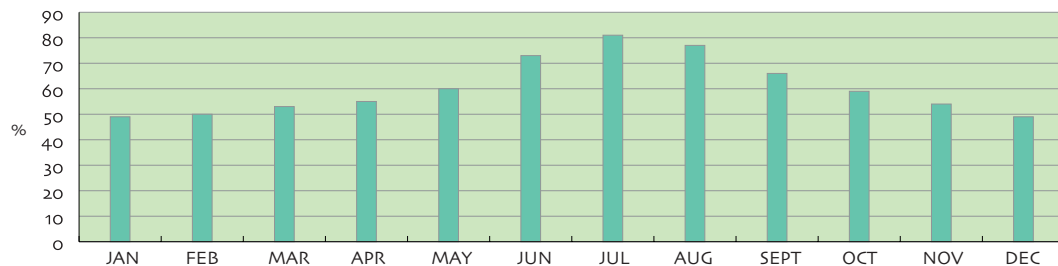


● AVERAGE MAX TEMP ● MEAN MONTHLY TEMP ● AVERAGE MIN TEMP



MONTHS	JAN	FEB	MAR	APR	MAY	JUN	JUL	AUG	SEPT	OCT	NOV	DEC
AVERAGE MAX TEMP (°C)	-0.2	2.7	8.5	16.2	22.1	25.7	28.1	28.6	25.3	18.4	9.7	2.7
MEAN TEMP (°C)	-4.8	-2.4	3.5	11.2	17.3	21.6	24.8	24.7	20.2	13.1	4.6	1.8
AVERAGE MIN TEMP (°C)	-8.7	-6.3	-0.3	7.0	13.1	18.1	21.7	21.1	15.6	8.5	0.6	-5.5

● HUMIDITY



MONTHS	JAN	FEB	MAR	APR	MAY	JUN	JUL	AUG	SEPT	OCT	NOV	DEC
AVERAGE HUMIDITY (%)	49	50	53	55	60	73	81	77	66	59	54	49



## Qinhuangdao Olympic Sports Center Stadium

Facility for: Track and field

Facility description:

- Six-story main structure with 32,000 seats
- 400m synthetic track and 104m x 68m natural turf football field
- Weight training room, showers, changing rooms and toilets

## Qinhuangdao Cycling Stadium

Facility for: Cycling

Facility description:

- Standard open oval 333.33m cycle racing track
- 1,500 seats
- 8m cement track, 37°39'03"-11°06'11" in obliquity
- Weight training room, showers, changing rooms and toilets

## Qinhuangdao Olympic Sports Center Gymnasium

Facility for: Basketball, volleyball and table tennis

Facility description:

- 20,905 sq m in construction area
- 5,650 seats
- Wooden floor
- Weight training room, showers, changing rooms and toilets

## Qinhuangdao Training Center

Facility for: Beach volleyball

Facility description:

- Multi-function sports complex facing the sea
- Eight beach volleyball courts: four filled with quartz sand and four filled with beach sand
- Weight training room, showers, changing rooms and toilets



## Qinhuangdao China Football School

Facility for: Football

Facility description:

- 2 artificial turf, 3 natural turf, and 13 earthen fields
- Weight training room, showers, changing rooms and toilets

## Qinhuangdao Economic and Technological Development Zone Shooting Range

Facility for: Shooting

Facility description:

- 50m shooting range with 30 shooting positions
- 25m shooting range with 8 shooting positions
- 10m shooting range with 36 shooting positions
- Running target shooting range with 3 shooting positions
- One clay target shooting range
- Weight training room, showers, changing rooms and toilets

## Qinhuangdao Marine Sports Venue

Facility for: Sailing

Facility description:

- 131,100 sq m in total, 69,600 sq m in land area and 61,500 sq m in water area, 3.5-4m in depth
- 557m of bank revetment on the east and west
- 844m of breakwater
- Two docks and 1 floating pier
- 100m slope for sails transportation
- Weight training room, showers, changing rooms and toilets

## Qinhuangdao Amateur Sports School Training Gymnasium

Facility for: Volleyball, wrestling and boxing

Facility description:

- 26,000 sq m in construction area, multi-function complex
- 65m x 27m x 12m wooden-flooring main hall
- 37.8m x 27m x 9m volleyball hall with 2 courts
- 114m x 8m x 6m synthetic training hall on the first floor
- Weight training room, showers, changing rooms and toilets



# TANGSHAN

Area: 13,472 sq km

Population of 2.93 million

Longitude: 117°31'-119°91'E Latitude: 38°55'-40°28'N

Location: East of Hebei Province

Tangshan is accessible from all directions. Jingtang Port is linked with more than 120 ports throughout the world. Three trunk rail lines, three national highways and four expressways intersect here.

Tangshan is famous for its unique scenery. Eastern Qing Tombs are the largest imperial structure of its kind that still exist in China. It was listed as a world cultural heritage site in 2000.



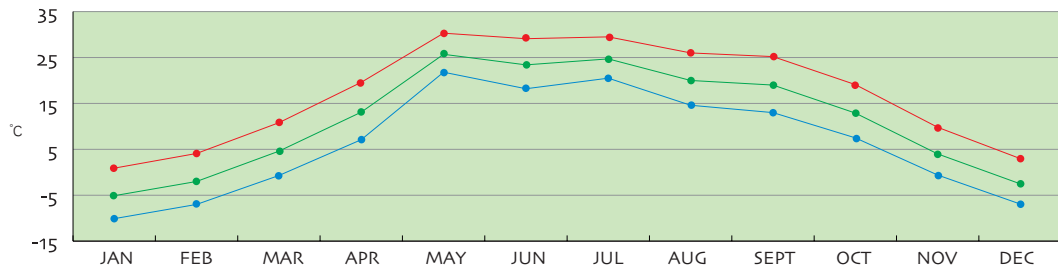
## Tangshan Natatorium

Facility for: Swimming

Facility description:

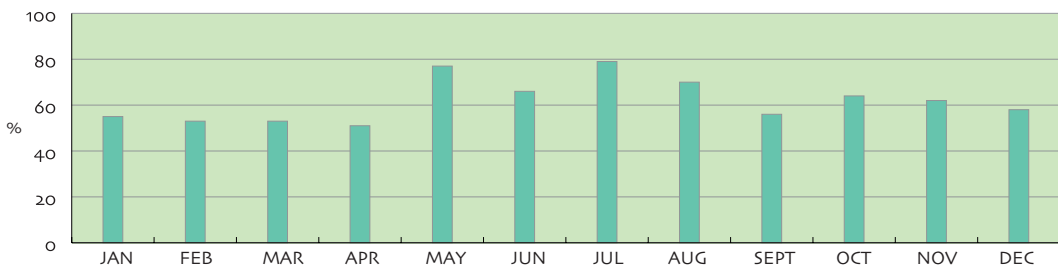


● AVERAGE MAX TEMP ● MEAN MONTHLY TEMP ● AVERAGE MIN TEMP



MONTHS	JAN	FEB	MAR	APR	MAY	JUN	JUL	AUG	SEPT	OCT	NOV	DEC
AVERAGE MAX TEMP (°C)	0.9	4.1	10.8	19.6	30.3	29.1	29.5	26	25.2	19.1	9.8	3
MEAN TEMP (°C)	-5.1	-2	4.6	13.1	25.7	23.4	24.7	20	19	12.9	4	-2.5
AVERAGE MIN TEMP (°C)	-10.1	-7	-0.7	7.1	21.8	18.2	20.5	14.6	13	7.5	-0.6	-6.9

● HUMIDITY



MONTHS	JAN	FEB	MAR	APR	MAY	JUN	JUL	AUG	SEPT	OCT	NOV	DEC
AVERAGE HUMIDITY (%)	55	53	53	51	77	66	79	70	56	64	62	58

- 7,983 sq m in floor space
- One 50m standard swimming pool
- One 25m standard swimming pool
- Weight training room, showers, changing rooms and toilets

## Tangshan Shooting Hall

Facility for: Shooting

Facility description:

- 8,056 sq m in floor space
- All shooting events suitable
- Weight training room, showers, changing rooms and toilets

## Tangshan Stadium

Facility for: Track and field

Facility description:

- 7,456 sq m in floor space, with 25,000 seats
- 400m standard synthetic track
- One natural turf football field
- Weight training room, showers, changing rooms and toilets



# CHENGDE

Area: 39,548 sq km

Population: 3.4 million

Longitude: 115°54'-119°15'E Latitude: 40°12'-42°40'N

Location: In the central part of Yanshan Mountains, north Hebei Province

Climate:

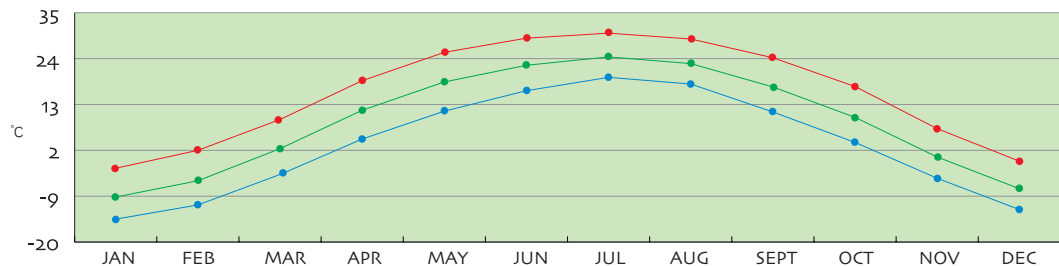
Chengde has a climate featuring scorching summer, freezing winter and noticeable changes in temperature in different seasons, which rises quickly in spring.

Chengde has fine transport facilities. The opening to service of the Beijing-Chengde tourist highway reduces travel between the two places to three hours' drive.

Chengde teems with historical sites. The construction of Chengde Royal Summer Resort, the largest imperial garden in today's world, took 89 years of three emperors of the Qing Dynasty (1644-1911). There are also 12 grand temples surrounding the complex in the northeast.

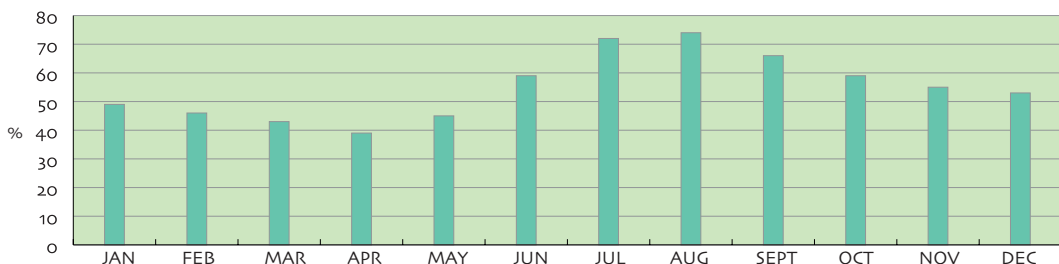


● AVERAGE MAX TEMP ● MEAN MONTHLY TEMP ● AVERAGE MIN TEMP



MONTHS	JAN	FEB	MAR	APR	MAY	JUN	JUL	AUG	SEPT	OCT	NOV	DEC
AVERAGE MAX TEMP (°C)	-2.3	2	9.4	18.7	25.5	28.9	30.1	28.7	24.2	17.3	7.2	-0.6
MEAN TEMP (°C)	-9.2	-5.3	2.4	11.6	18.4	22.4	24.4	22.8	17.2	9.9	0.4	-7.2
AVERAGE MIN TEMP (°C)	-14.5	-11.1	-3.8	4.7	11.4	16.3	19.5	17.9	11.2	3.9	-4.7	-12.2

● HUMIDITY



MONTHS	JAN	FEB	MAR	APR	MAY	JUN	JUL	AUG	SEPT	OCT	NOV	DEC
AVERAGE HUMIDITY (%)	49	46	43	39	45	59	72	74	66	59	55	53



A panoramic view of the Outer Eight Temples

## Chengde Stadium

Facility for: Track and field

Facility description:

- 400m standard synthetic track
- One standard artificial turf football field
- 3,000 seats
- Sheltered track and indoor training hall
- Weight training room, showers, changing rooms and toilets



# LANGFANG

Area: 6,429 square km

Population: 3.872 million

Location: Central part of Hebei Province

Langfang is 40 km from Beijing, 60 km from Tianjin, 70 km from airports of both Beijing and Tianjin and 100 km from Tianjin Port.



## Langfang Stadium

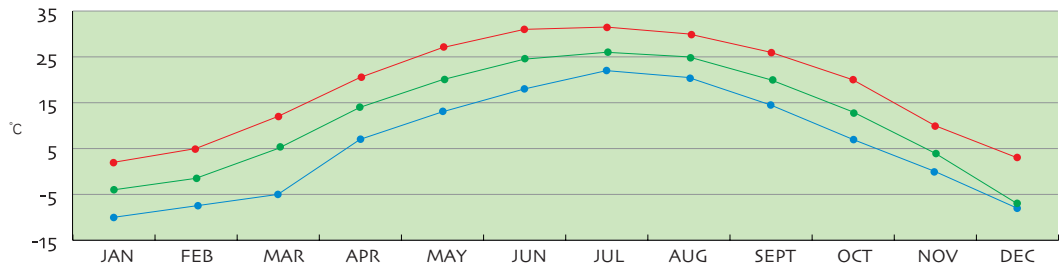
Facility for: Track and field

Facility description:

- 30,000 seats
- Standard track surrounding a turf football field
- Weight training room, showers, changing rooms and toilets

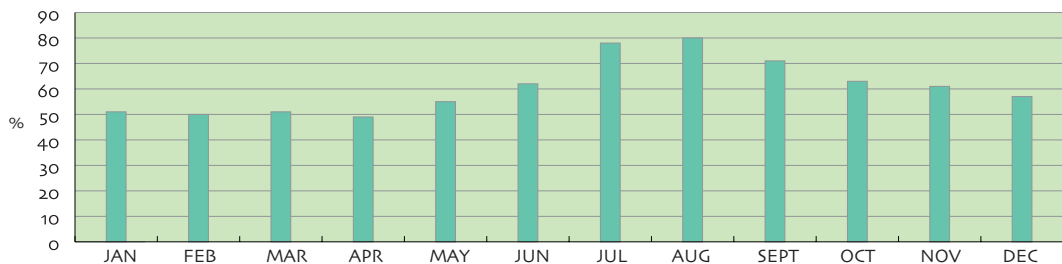


● AVERAGE MAX TEMP ● MEAN MONTHLY TEMP ● AVERAGE MIN TEMP



MONTHS	JAN	FEB	MAR	APR	MAY	JUN	JUL	AUG	SEPT	OCT	NOV	DEC
AVERAGE MAX TEMP (°C)	2	5	12	20.5	27	31	31.5	30	26	20	10	3
MEAN TEMP (°C)	-4	-1.5	5	14	20	24.5	26	25	20	13	4	-2
AVERAGE MIN TEMP (°C)	-10	-7.5	-5	7	13	18	22	20.5	14.5	7	-8	-3

● HUMIDITY



MONTHS	JAN	FEB	MAR	APR	MAY	JUN	JUL	AUG	SEPT	OCT	NOV	DEC
AVERAGE HUMIDITY (%)	51	50	51	49	55	62	78	80	71	63	61	57

## XIANGHE COUNTY

---

Area: 458 sq km

Population: 307,000

Xianghe, in the north of Langfang, is 70 km from Beijing.

### Chinese Football Association Training Center

Facility for: Football

Facility description:

- Six standard football fields, including 1 artificial turf fields and 1 illuminated field
- 400m synthetic track of 6 lanes
- Weight training room, swimming pool
- Sauna, showers, changing rooms and toilets
- Four-star athletes apartments



## XINGLONG COUNTY

---

Location: In the center of a triangle of Beijing, Tianjin and Tangshan, 110 km from Beijing Capital Airport

Average annual temperature: 6.5-10.3°C Average elevation: 1,000m

### Xinglong Athletic Training Center

Facility for: Track and field

Facility description:

- 48,674 sq m, with outdoor training arena of 22,395 sq m
- Training hall of 1,612 sq m
- Standard athletic field with 400m track
- 8,266 sq m in floor space, with apartments of 6,820 sq m able to accommodate 320 athletes
- Weight training room, showers, changing rooms and toilets