

# HEILONGJIANG PROVINCE

Area: 454,000 sq km

Population: 38.15 million

Longitude: 121°11'-135°05'E Latitude: 43°25'- 53°33'N

Location: Northeastern tip of China

Climate: Continental monsoon climate between the temperate zone and the frigid zone.

- Average annual temperature: -4°C- 4°C
- Topography:
  - A terrain high in the northwest, north and southeast and low in the north-east and southwest
  - The Greater and Lesser Hinggan Mountains running across the northern part
  - Nenjiang and Songhuajiang rivers flowing through it from south to north
  - Hills accounting for 70% of the province's total area and plains, 30%

C

180

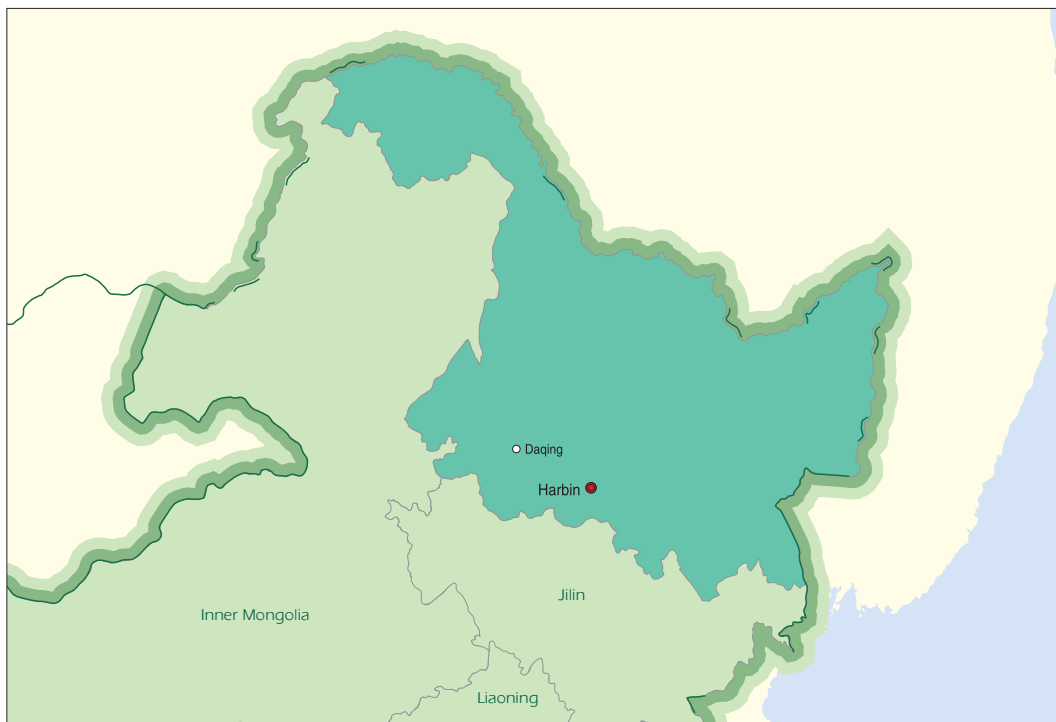


Jingpohu Lake



Heilongjiang has abundant tourist resources. It is noted for heavy, good-quality snowfall in winter, which provides suitable conditions for skiing, ice art and other ice recreations. Snow time is around 120 days.

It has 37 forest parks and nine natural reserves at national level. Major scenic spots include the Jingpohu Lake, the Wudalianchi volcanic field, and the Xingkaihu Lake.



C

182

## HARBIN

---

Area: 53,000 sq km

Population: 9.54 million

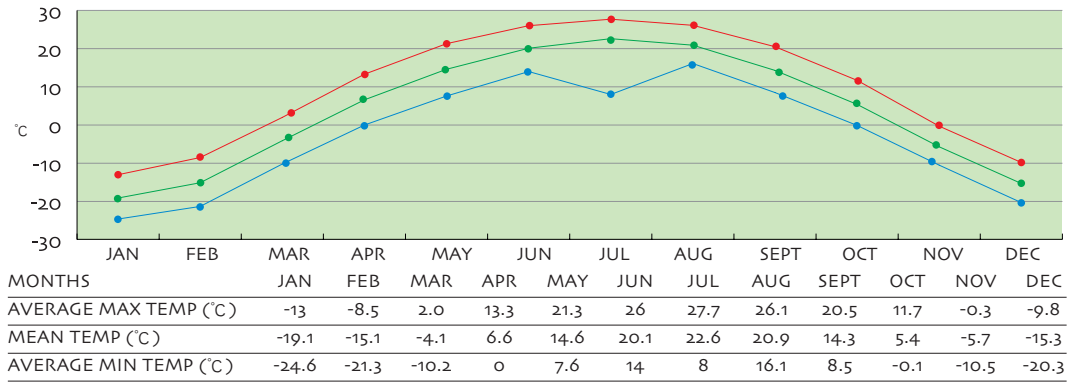
Longitude: 125°42'-130°10'E Latitude: 44°04'- 46°40'N

Location: South of Heilongjiang Province

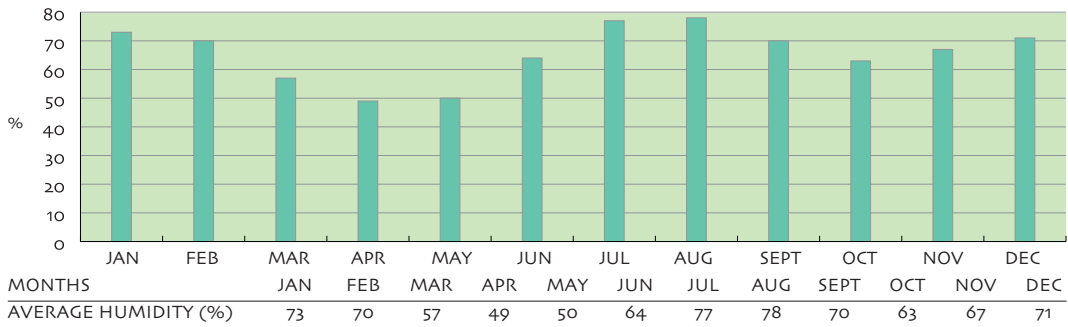
Climate: Continental monsoon climate of the temperate zone featuring long winter and short summer.

Harbin, capital of Heilongjiang Province, has convenient transport facilities, accessible from all directions. The Harbin Airport is the largest international airport in northeast China. The Harbin Railway Station is a major railway hub in the northern area of the northeast. It is known as the "Ice City of China" for ice art appreciation, skiing and other relaxations, as well as a tourist and summer resort.

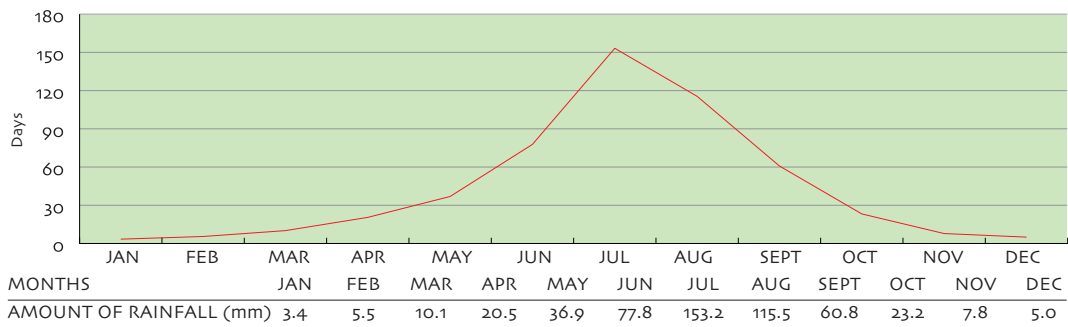
● AVERAGE MAX TEMP ● MEAN MONTHLY TEMP ● AVERAGE MIN TEMP



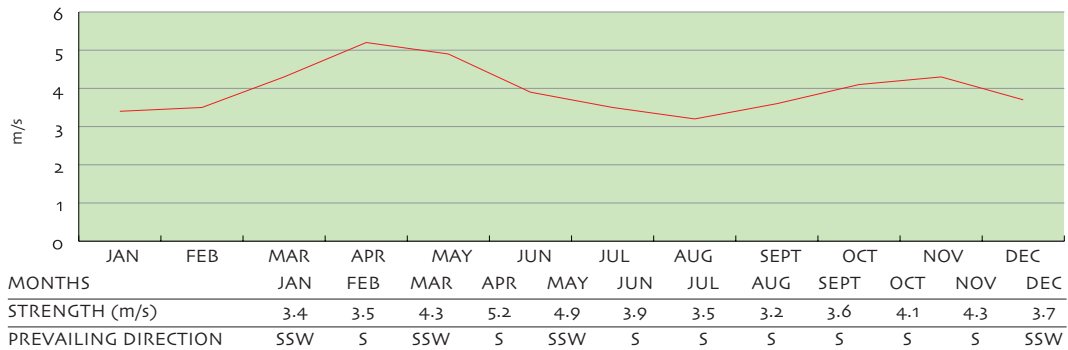
● HUMIDITY



● AMOUNT OF RAINFALL



● PREVAILING WIND DIRECTION AND AVERAGE STRENGTH



## Heilongjiang Tianrun Gymnasium

Facility for: Basketball

Facility description:

- 1,830 sq m
- 60m x 30m competition court
- Weight training room, showers, changing rooms and toilets

## Harbin International Convention and Exhibition Center

Facility for: Basketball

Facility description:

- 75m x 47m wooden-flooring competition area
- Four basketball courts
- Weight training room, showers, changing rooms and toilets





Night view of Harbin



Exterior of the International Convention and Exhibition Center



Exterior of Tianrun Gymnasium

# DAQING

Area: 21,219 sq km

Population: 2.4 million

Longitude: 124°19'- 125°12'E Latitude: 45°46'- 46°55'N

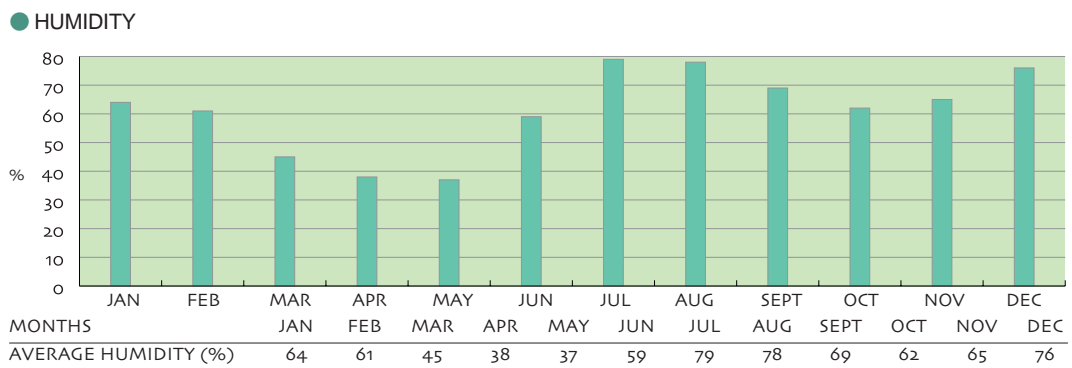
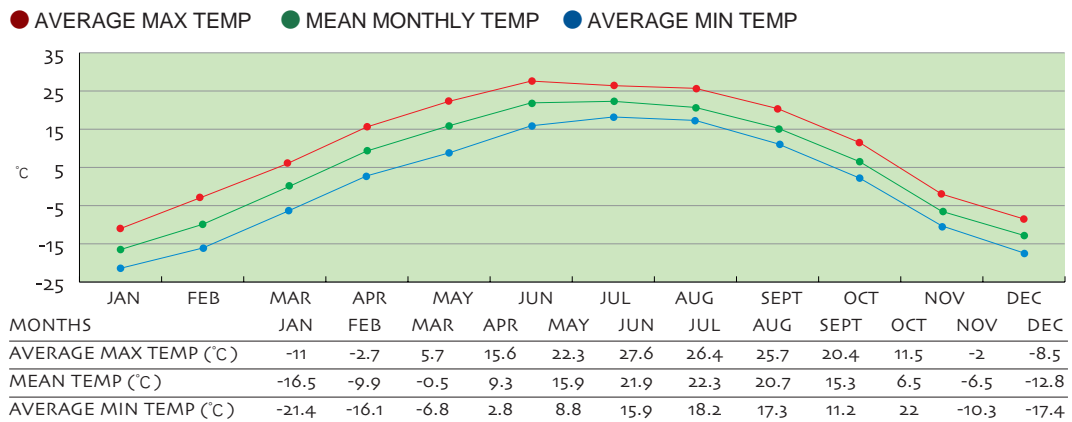
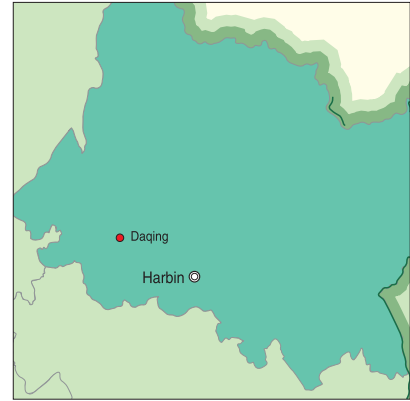
Location: West of Heilongjiang Province

Climate:

Continental monsoon climate of the Northern Temperate Zone.

- Average annual temperature: 6.2°C
- Annual sunshine: 2,658 hours
- Annual frost-free period: 168 days

Daqing boasts many scenic sites along the banks of the Songhuajiang and Nenjiang rivers.





Inside the table tennis training hall

## Daqing China Table Tennis Training Center

Facility for: Table tennis

Facility description:

- Two 65m x 18m x 9m training halls
- 48 table tennis tables containable
- Weight training room, showers, changing rooms and toilets