

JIANGSU PROVINCE

Area: 102,600 sq km

Population: 74.38 million

Longitude: 116°18'-121°57' E Latitude: 30°45'-35°20' N

Location: In the middle part of China's east coast a area

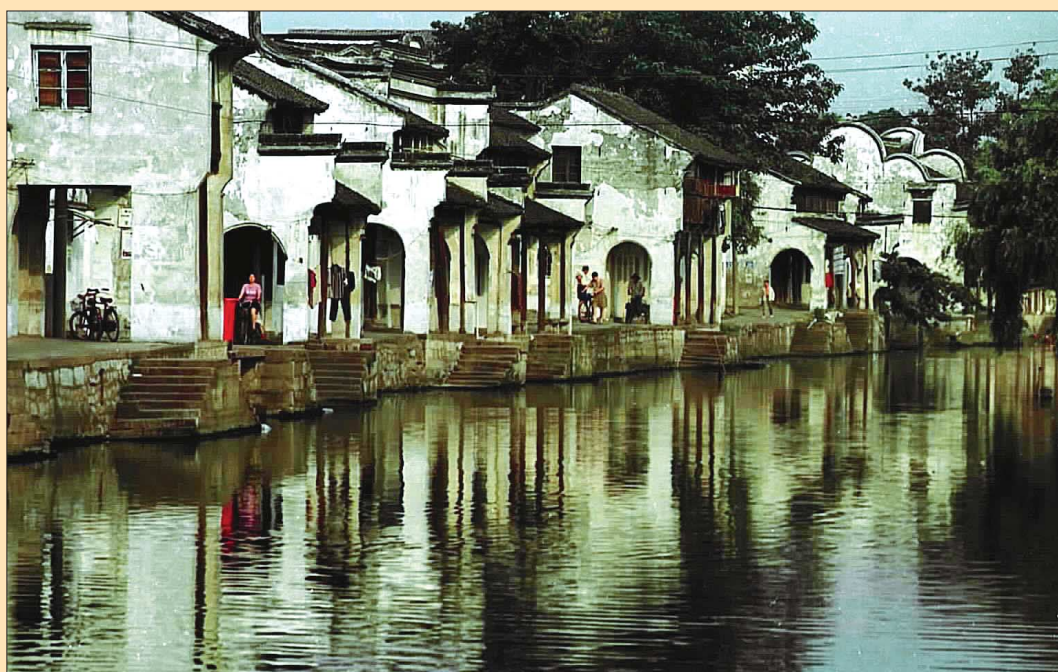
Climate: Temperate climate, due to its location in a transit belt from the sub-tropical to a warm temperate zone.

- Average annual temperature: 13°C-16°C

- Annual precipitation: 1,000 mm

Jiangsu, lying on the lower reaches of the Yangtze River and Huaihe River, faces the Yellow Sea in the east, having 954 km of coastline. The Yangtze River stretches 425 km traversing the province from west to east and the Beijing-Hangzhou Grand Canal runs 718 km through it from south to north.

Jiangsu has been a tourist resort since ancient times. Nanjing, Suzhou, Yangzhou, Zhenjiang, Changshu, Xuzhou and Huai'an are all historical cities renowned in China. Of them, Nanjing served as capital of six ancient dynasties.



Zhouzhuang, an ancient town of rivers



The Yangtze River, Taihu Lake and Xuzhou-Lianyungang constitute three largest scenic areas in the province. There are 20 scenic spots, 23 forest parks, six holiday resorts and 416 cultural heritage sites under the state or provincial protection. Nine classical gardens in Suzhou have been included into UNESCO's World Cultural Heritage List.



NANJING CITY

Area: 6,597 sq km

Population: 5.4 million

Longitude: 118°22'-119°14' E

Latitude: 31°14'-32°36' N

Location: Lower reaches of the Yangtze River

Climate: Subtropical monsoon climate with four distinctive seasons.

- Average annual temperature: 15.7°C
- Annual precipitation: 1,021.3 mm

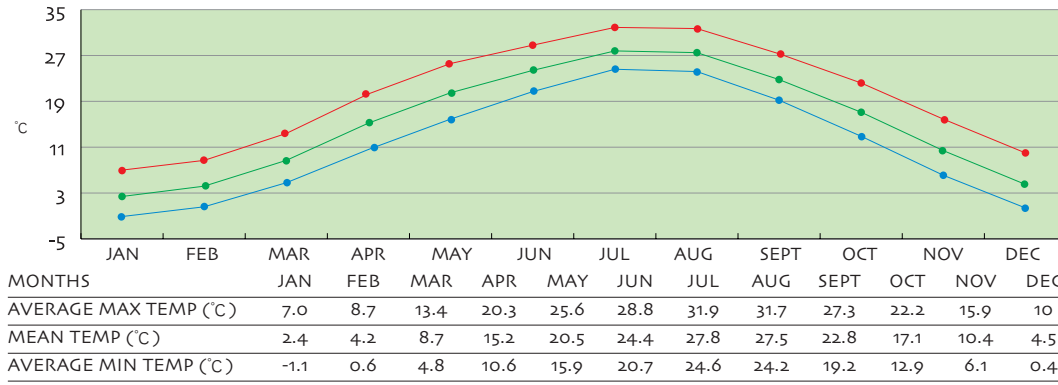
Nanjing, capital city of Jiangsu Province, is accessible by air, express highway, railway and waterway.

Nanjing boasts beautiful natural landscape. Located on the forest-covered Zijinshan Mountain in the east of the city are magnificent Dr. Sun Yat-sen's Mausoleum and Ming Xiaoling Mausoleum. Xuanwuhu Lake is surrounded by mountains on three sides and adjacent to the city. The rippling blue water reflects the mountain peaks and pagodas by the lake.

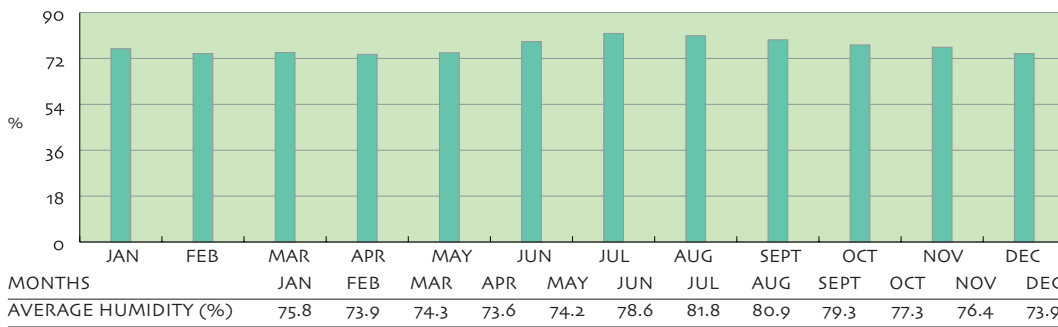


Fuzi (Confucius) Temple

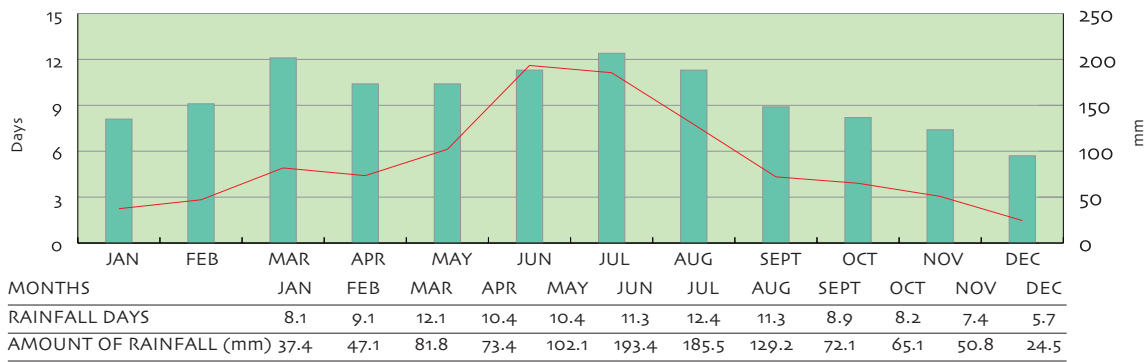
● AVERAGE MAX TEMP ● MEAN MONTHLY TEMP ● AVERAGE MIN TEMP



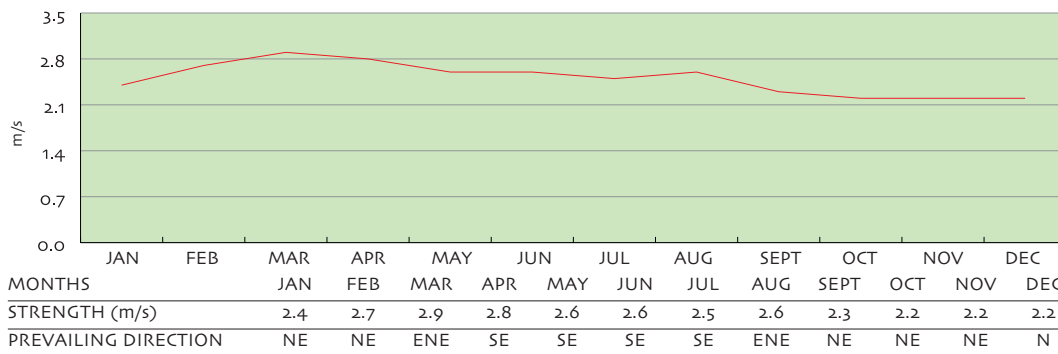
● HUMIDITY



● RAINFALL DAYS ● AMOUNT OF RAINFALL



● PREVAILING WIND DIRECTION AND AVERAGE STRENGTH



Jiangsu Trampoline Training Hall

Facility for: Trampoline

Facility description:

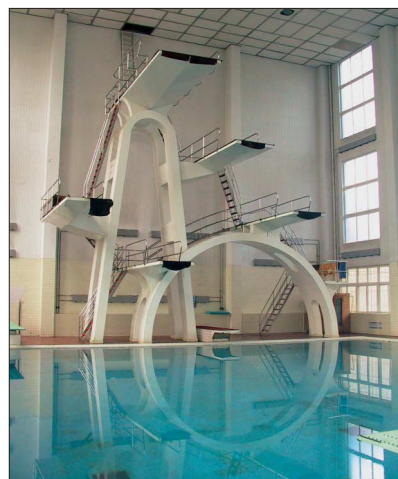
- Seven trampolines
- Weight training room, changing rooms and toilets

Nanjing Institute of Physical Education Natatorium

Facility for: Diving

Facility description:

- 4,241 sq m
- One 20m x 16m standard diving pool
- 1m and 3m springboards and 7.5m and 10m platforms
- Weight training room, showers, changing rooms and toilets



Nanjing Institute of Physical Education Natatorium

Longjiang Gymnasium

Facility for: Wrestling and judo

Facility description:

- 44m x 30m
- A complete equipment for wrestling and judo
- Weight training room, changing rooms and toilets

Nanjing Olympic Sports Center Gymnasium

Facility for: Basketball, volleyball, table tennis, badminton, handball, judo, wrestling, boxing and taekwondo

Facility description:

- 60,000 sq m, with two halls
- 13,000 seats in the main hall
- 40m x 70m training area
- Weight training room, showers, changing rooms and toilets

Nanjing Olympic Sports Center Stadium

Facility for: Track and field

Facility description:

- 136,000 sq m, with a seating capacity of 60,000
- 400m synthetic track of 8 lanes
- Weight training room, showers, changing rooms and toilets



Exterior of the gymnastic hall

Nanjing Institute of Physical Education Gymnastic Hall

Facility for: Artistic Gymnastics

Facility description:

- 5,448 sq m
- All apparatus for competition and training
- Changing rooms and toilets



An overall view of the cycling velodrome

Nanjing Institute of Physical Education Rhythmic Gymnastic Hall

Facility for: Rhythmic gymnastics

Facility description:

- 5,448 sq m
- Four Training areas
- All equipment for competition and training
- Changing rooms and toilets



Exterior of the natatorium

Nanjing Institute of Physical Education Cycling Stadium

Facility for: Cycling

Facility description:

- 3,551 sq m
- 250m competition tracks
- Weight training room, showers, changing rooms and toilets

Wutaishan Natatorium

Facility for: Swimming

Facility description:

- 11,190 sq m
- One standard swimming pool
- One standard diving pool
- One standard training pool
- Weight training room, showers, changing rooms and toilets

Wutaishan Gymnasium

Facility for: Judo

Facility description:

- An area of 28m x 48m

- Over 8,000 seats
- Weight training room, showers, changing rooms and toilets

Nanjing Institute of Physical Education Athletic Field

Facility for: Track and field

Facility description:

- 20,000 sq m
- 400m standard synthetic tracks
- Weight training room, showers, changing rooms and toilets

Nanjing Institute of Physical Education Badminton Hall

Facility for: Badminton

Facility description:

- 1,933 sq m
- 12 standard courts
- Weight training room, showers, changing rooms and toilets

Nanjing Institute of Physical Education Fencing Hall

Facility for: Fencing

Facility description:

- 3,031 sq m
- 18 fencing pistes
- Weight training room, showers, changing rooms and toilets

Jiangsu Fangshan Sports Training Center

Facility for: Shooting and archery

Facility description:

- One 280m x 20m shooting hall:
 - 50m shooting range with 70 shooting positions
 - 10m shooting range with 80 shooting positions (60 electronic targets)
 - 25m range with 12 groups of targets
 - 10m running target range with 6 groups of targets
- Finals hall:
 - 10m range with 10 sets of electronic targets



Athletics field



Exterior of the badminton hall



Interior of the fencing hall



An overall view of the softball field

- 50m range with 10 sets of electronic targets and 25m range with 3 groups of targets
- Clay target range with 4 areas each for trap, double-trap and skeet
- Standard archery range
- Weight training room, showers, changing rooms and toilets

Nanjing Zhongshanmen Physical Education School Combat Sports Hall

Facility for: Judo

Facility description:

- A three-floor building with 48m x 20m on each floor
- Six standard judo mats
- Weight training room, showers, changing rooms and toilets

Jiangsu Equestrian Race Course

Facility for: Equestrian

Facility description:

- One 3,800m race track
- Two 90m x 40m sand arena for jumping
- Two 60m x 20m sand arena for dressage
- Showers, changing rooms and toilets

Nanjing Olympic Sports Center Natatorium

Facility for: Swimming

Facility description:

- One 50m standard swimming pool
- One diving pool, 6m in depth of water
- One practice pool
- Weight training room, showers, changing rooms and toilets

Nanjing University of Technology Softball Field

Facility for: Softball

Facility description:

- 5,266 sq m, able to host 2,500 spectators
- Weight training room, showers, changing rooms and toilets

SUZHOU CITY

Area: 8,488 sq km

Population: 5.839 million

Longitude: 120°37' E Latitude: 31°39' N

Location: In the southern part of Jiangsu Province

Climate: Temperate climate with four distinctive seasons.

- Average annual temperature: 16°C
- Annual precipitation: 1,100 mm
- Annual frost-free period: 230 days

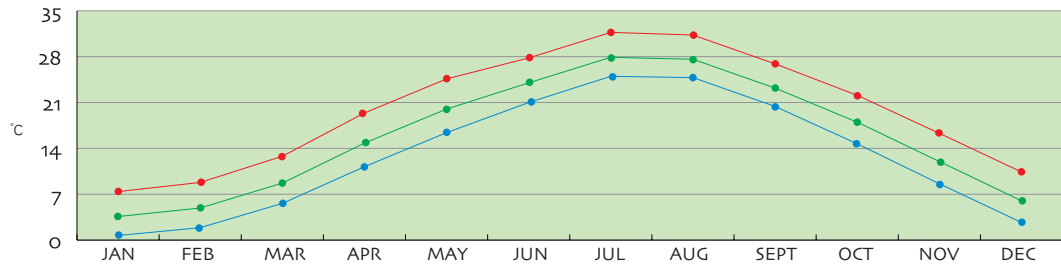


The ancient Suzhou City has crisscross of waters, with streets built along rivers. All the buildings face a lane and have a river behind, creating a unique picture of "a small bridge, running water, and a family."

Suzhou is noted for classical gardens, with nine of its gardens including the Humble Administrator's Garden, Lingering Garden, Fisherman's Net Garden, Lion Forest and Garden of Cultivation being inscribed on the UNESCO

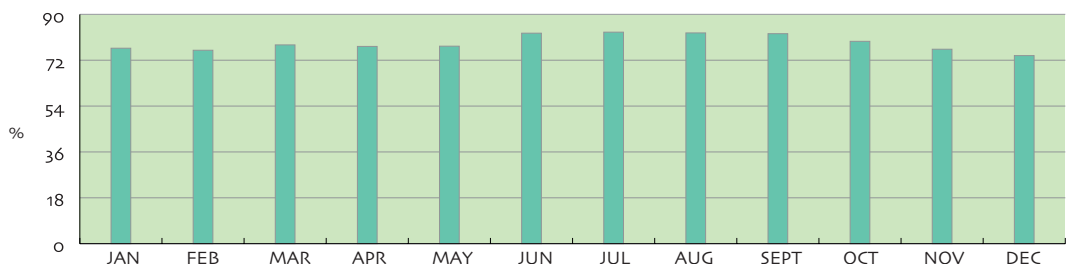


● AVERAGE MAX TEMP ● MEAN MONTHLY TEMP ● AVERAGE MIN TEMP



MONTHS	JAN	FEB	MAR	APR	MAY	JUN	JUL	AUG	SEPT	OCT	NOV	DEC
AVERAGE MAX TEMP (°C)	7.4	8.8	12.8	19.4	24.6	27.8	31.7	31.3	26.9	22.1	16.3	10.4
MEAN TEMP (°C)	3.6	4.9	8.7	14.8	20	24	27.9	27.6	23.2	18	12	6
AVERAGE MIN TEMP (°C)	0.7	1.9	5.6	11.2	16.4	21	25	24.8	20.4	14.7	8.6	2.7

● HUMIDITY



MONTHS	JAN	FEB	MAR	APR	MAY	JUN	JUL	AUG	SEPT	OCT	NOV	DEC
AVERAGE HUMIDITY (%)	76.7	75.9	78	77.4	77.5	82.6	83	82.7	82.4	79.4	76.3	73.8



The Fisherman's Net Garden



Exterior of the natatorium

World Heritage List. Its ancient towns of Tongli, Zhouzhuang and Luzhi are applying for the world heritage listing.

Suzhou Sports Center Natatorium

Facility for: Synchronized swimming

Facility description:

- 3,700 sq m
- One 50m x 21m standard swimming pool
- One 50m x 14m practice pool of 4 lanes
- Advanced water recycling facilities
- Showers, changing rooms and toilets

Suzhou Sports Center Gymnasium

Facility for: Basketball

Facility description:

- 42,627 sq m, able to host 6,000 spectators
- 60m x 38m x 29m indoor wooden-flooring ground
- Showers, changing rooms and toilets

WUXI CITY

Area: 4,650 sq km

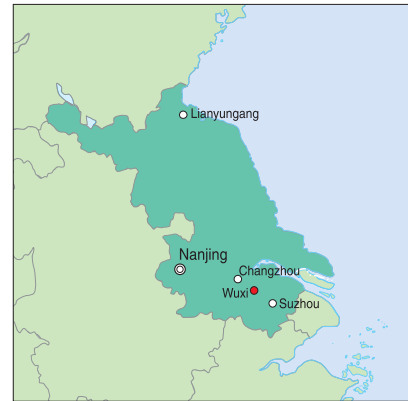
Population: 4.3 million

Location: Southern part of Jiangsu Province

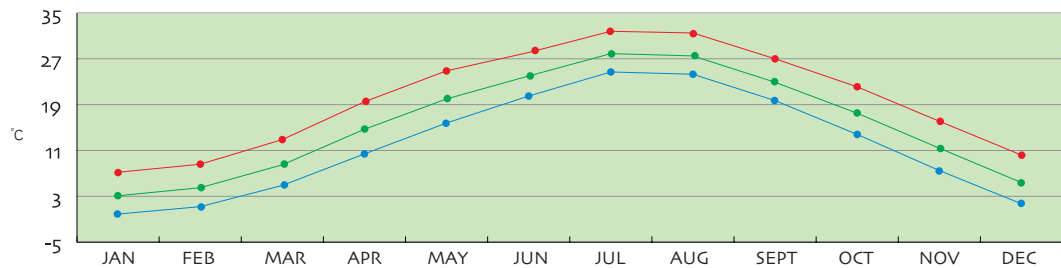
Climate:

Subtropical monsoon marine climate, warm and humid, with four distinctive seasons.

Wuxi is a transportation hub linking Jiangsu, Zhejiang and Anhui Provinces. Within its boundary, all the rivers, lakes and the sea join each other, providing very convenient waterway transportation. The Beijing-Hangzhou Grand Canal traverses the city from south to north. In addition, Beijing-Shanghai Railway runs through Wuxi from east to west. The Shuofang Airport, which is only 20 km from downtown area, provides regular flights to Beijing, Fuzhou, Foshan and Huiyang. Wuxi has beautiful scenery integrating rivers, lakes, springs, caves and gardens.

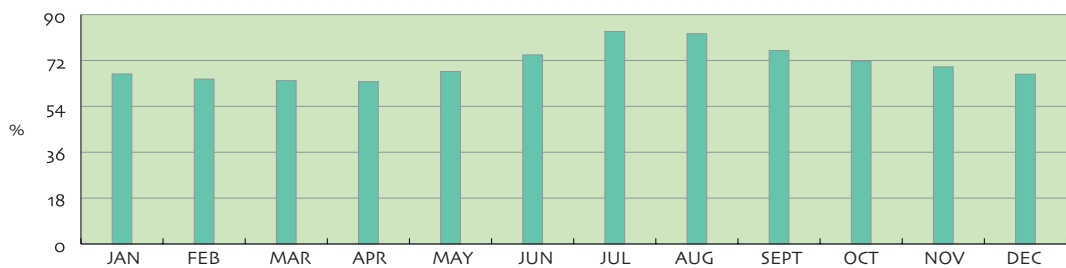


● AVERAGE MAX TEMP ● MEAN MONTHLY TEMP ● AVERAGE MIN TEMP



MONTHS	JAN	FEB	MAR	APR	MAY	JUN	JUL	AUG	SEPT	OCT	NOV	DEC
AVERAGE MAX TEMP (°C)	7.2	8.6	12.9	19.5	24.9	28.1	31.8	31.5	27	22.1	16.1	10.2
MEAN TEMP (°C)	3.1	4.5	8.5	14.7	20	24	27.9	27.5	22.9	17.5	11.4	5.4
AVERAGE MIN TEMP (°C)	-0.1	1.2	4.9	10.4	15.8	20.5	24.7	24.3	19.7	13.8	7.5	1.7

● HUMIDITY



MONTHS	JAN	FEB	MAR	APR	MAY	JUN	JUL	AUG	SEPT	OCT	NOV	DEC
AVERAGE HUMIDITY (%)	76.5	76.1	78	77.5	77.5	82.2	83.2	83.3	82.8	80	76.7	73.8



Taihu Lake

Jiangsu Wuxi Baseball Field

Facility for: Baseball

Facility description:

- Foul lines, 98.54m long each
- 18.29m between the homebase and the back net
- 121.92m long from the homebase to the center and outfields via the second base.
- Weight training room, showers, changing rooms and toilets

LIANYUNGANG CITY

Area: 7,444 sq km

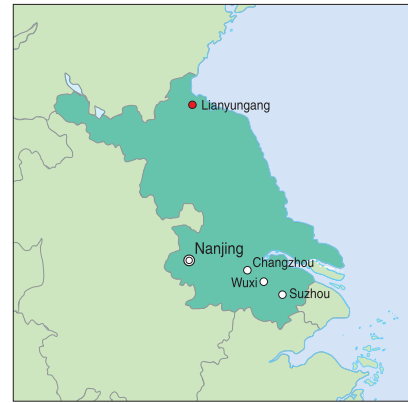
Population: 4.65 million

Location: Northeastern part of Jiangsu Province

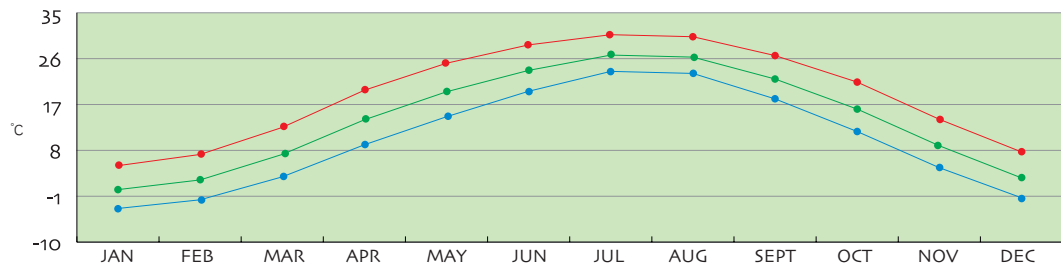
Average annual temperature: 14°C

Lianyungang has ready transportation facilities. It is linked with various large cities including Beijing, Guangzhou and Shanghai by railway lines. Nanjing-Lianyungang Express Highway, Xinyu first-class highway and another two national express highways meet within the boundary of Lianyungang. The Beijing-Hangzhou Grand Canal joins the city's inland waterways with Huaihe River and the Yangtze River. Its airport now provides a dozen air routes to Beijing, Shanghai, Guangzhou, Xiamen and some other cities.

Lianyungang is famous for its beautiful mountain and sea scenery. Its scenic attractions include Huaguoshan Mountain, from where the Monkey King comes, and the refreshing Donghai hot springs.

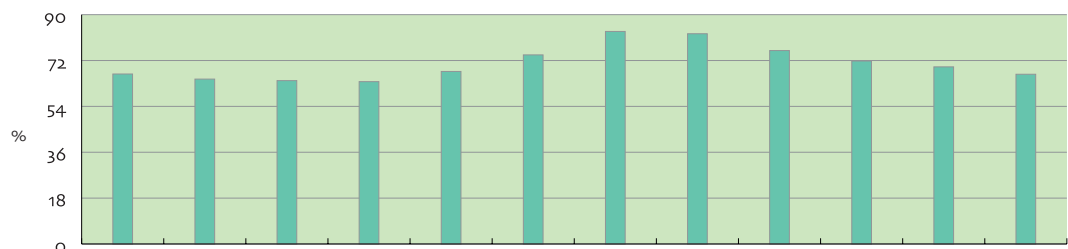


● AVERAGE MAX TEMP ● MEAN MONTHLY TEMP ● AVERAGE MIN TEMP



MONTHS	JAN	FEB	MAR	APR	MAY	JUN	JUL	AUG	SEPT	OCT	NOV	DEC
AVERAGE MAX TEMP (°C)	5.0	7.2	12.5	19.8	25.1	28.7	30.7	30.3	26.6	21.4	14.1	7.7
MEAN TEMP (°C)	0.3	2.2	7.2	14	19.5	23.7	26.7	26.3	22	16.1	8.9	2.6
AVERAGE MIN TEMP (°C)	-3.4	-1.7	2.8	9.1	14.6	19.6	23.5	23.1	18.1	11.7	4.6	-1.3

● HUMIDITY



MONTHS	JAN	FEB	MAR	APR	MAY	JUN	JUL	AUG	SEPT	OCT	NOV	DEC
AVERAGE HUMIDITY (%)	66.7	64.7	64.1	63.7	67.7	74.2	83.4	82.5	75.9	71.8	69.5	66.6



The Suma Gulf

Jiangsu Liandao Marine Training Center

Complex for: Sailing and badminton

Facility description:

- One 6,000 sq m training area for sailing
- Two floating piers
- Two return beacons
- One 2,000 sq m alternate boat storehouse
- One multi-function training hall (3,392 sq m)
- One beach volleyball court
- One athletic field (2,800 sq m)
- Weight training room, showers, changing rooms and toilets

CHANGZHOU CITY

Area: 4,375 sq km

Population: 3.8 million

Longitude: 119°08'-120° E Latitude: 31°09'-32°04' N

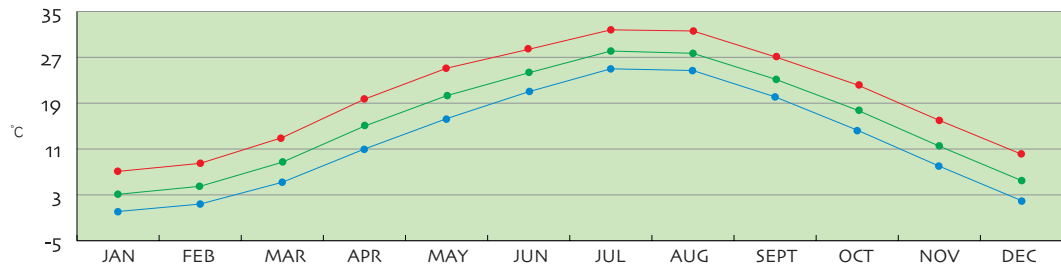
Location: Southern part of Jiangsu Province

Changzhou is situated at the center of the Yangtze River Delta. Both the Beijing-Hangzhou Grand Canal and the Beijing-Shanghai Railway run through the city. Shanghai-Nanjing Expressway and the No.312 National Highway pass by the city. Flights to a dozen cities including Beijing, Shanghai, Guangzhou and Xiamen are available at the Changzhou Airport. Changzhou has a pleasant climate with moderate temperature. It is a well-known land of abundance south of the lower reaches of the Yangtze River.

A long history has left Changzhou with a number of places of historical interest and scenic beauty. Among them is Yancheng of the Spring and Autumn Period (770-476

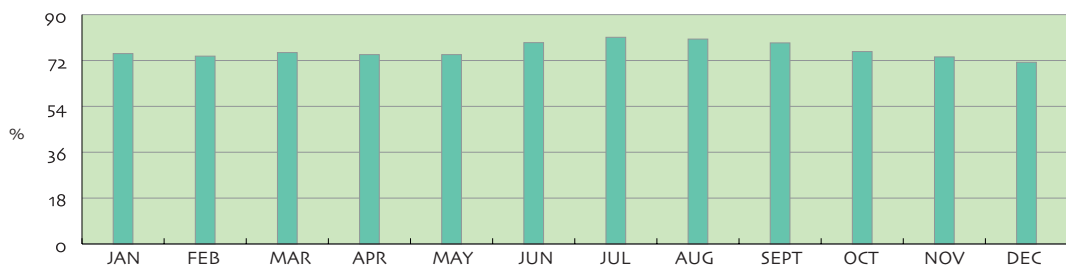


● AVERAGE MAX TEMP ● MEAN MONTHLY TEMP ● AVERAGE MIN TEMP



MONTHS	JAN	FEB	MAR	APR	MAY	JUN	JUL	AUG	SEPT	OCT	NOV	DEC
AVERAGE MAX TEMP (°C)	7.1	8.5	13	19.7	25.1	28.4	31.8	31.6	27.1	22.2	16	10.1
MEAN TEMP (°C)	3.1	4.5	8.7	15	20.3	24.3	28.1	27.7	23.2	17.8	11.5	5.5
AVERAGE MIN TEMP (°C)	0.1	1.4	5.2	11	16.3	21	25	24.7	20.1	14.3	8.0	2.0

● HUMIDITY



MONTHS	JAN	FEB	MAR	APR	MAY	JUN	JUL	AUG	SEPT	OCT	NOV	DEC
AVERAGE HUMIDITY (%)	74.7	73.7	75.1	74.3	74.3	79	81.1	80.4	78.9	75.5	73.4	71.3



The Tianmu Lake

B.C.)-the oldest and best preserved ground city ruins in China.

Wujin Hockey Field

Facility for: Hockey

Facility description:

- 91.4m x 55m, with artificial turf
- The buffer zones for the baseline and sideline are 5m and 4m respectively, up to the standard of the International Hockey Federation
- Weight training room, showers, changing rooms and toilets



The hockey field