

LIAONING PROVINCE

Area: 145,900 sq km

Population: 42.1 million

Longitude: 118°53'-125°46'E Latitude: 38°43'-43°26'N

Location: South of northeast China

Climate: Lying on the eastern coast of the Eurasian continent, has a warm continental monsoon climate, with long winter, short spring and autumn, and a warm summer.

- Average annual temperature: 7 -11°C
- Annual sunshine: 2,100-2,600 hours
- Annual precipitation: 600-1,100 mm
- Annual frost-free period: 130-200 days

Liaoning Province is adjacent to Jilin and Hebei Provinces and the Inner Mongolia Autonomous Region, facing the Democratic People's Republic of Korea across the Yalu River on the southeast and having a coastline of 2,178 km, accounting for 12% of China's total.



A structure in the Shenyang Imperial Palace Museum



Hills and mountains in the east form the main forest areas of Liaoning. The long, narrow coastal plains, fringing the hilly area in the west, are usually called the Liaoxi Corridor, which is the main passage linking the northeastern area with north China. The Liaohe Plain in central Liaoning is part of the Northeast China Plain. With fertile land and abundant water resources, it is a major agricultural area and commodity grain production base of the province.

Liaoning has over 11,300 cultural relics and historical sites, including 19 under key state protection and 159 under provincial-level protection. There are seven national-level scenic areas and seven provincial-level scenic spots. Famous places of historical and cultural interest include Ruins of Golden Ox Hill in Yingkou, which dates back 300,000 years, and the Imperial Palace Museum in Shenyang.



C

170

SHENYANG CITY

Area: 13,000 sq km

Population: 7.204 million

Longitude: 122°25'-123°48'E Latitude: 41°11'55"-43°2'13"N

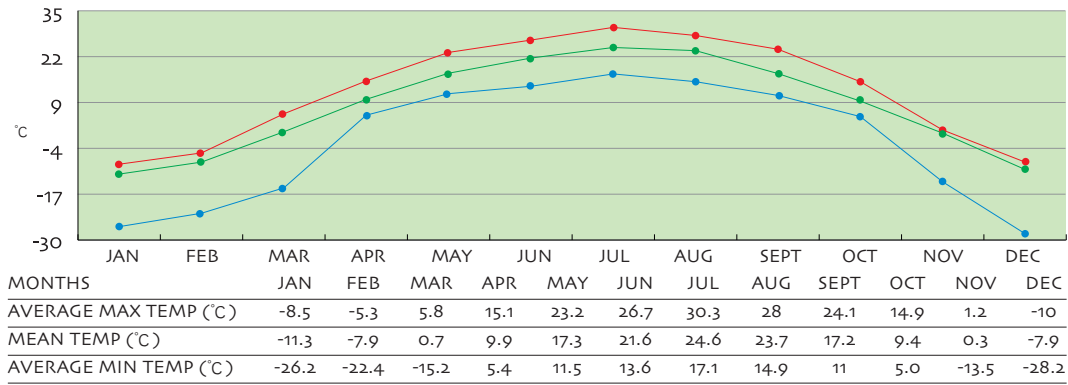
Location: South of northeast China

Climate: Subhumid continental climate dominated by the North Temperate Zone monsoon.

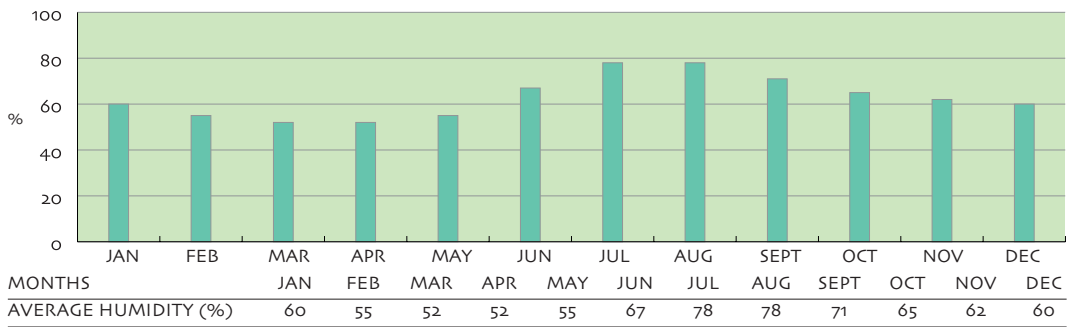
Capital of Liaoning Province, Shenyang serves as an important communication hub of northeast China. Its railway network, equipped with a top-grade passenger terminal and a modern railway marshalling yard. It has 78 air routes linking it with major domestic and foreign cities.

Shenyang is famous for the Shenyang Imperial Palace, a royal complex where Nurhachi (1559-1626) and his son Huangtaiji (1592-1643), the first two emperors of the Qing Dynasty (1644-1911), once lived.

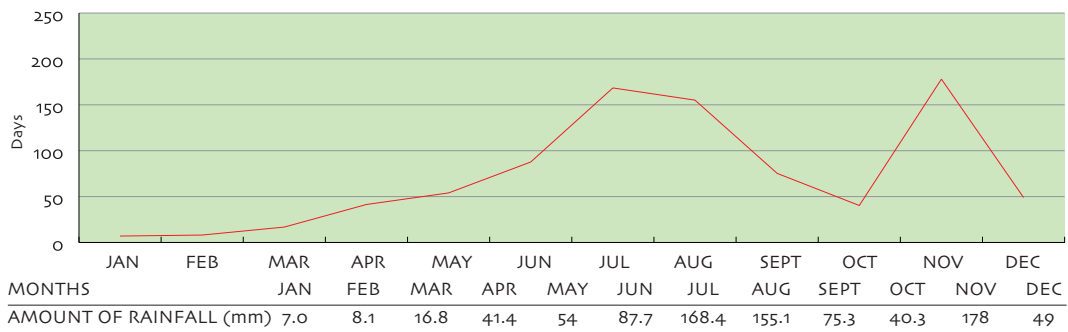
● AVERAGE MAX TEMP ● MEAN MONTHLY TEMP ● AVERAGE MIN TEMP



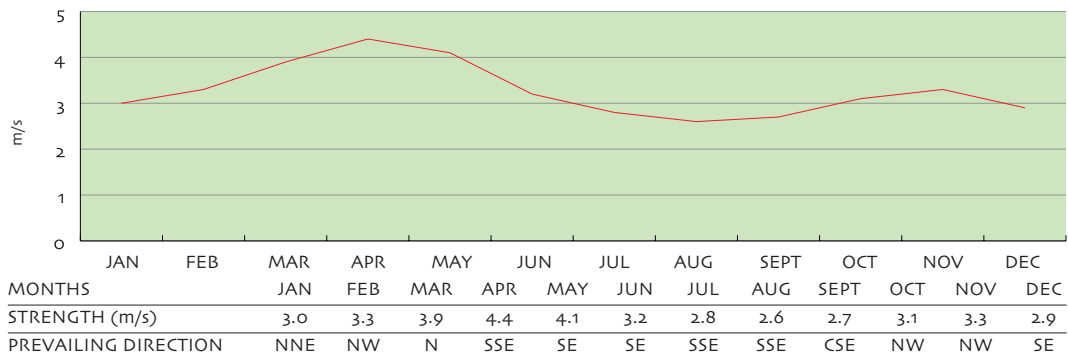
● HUMIDITY



● AMOUNT OF RAINFALL



● PREVAILING WIND DIRECTION AND AVERAGE STRENGTH



Shenyang Natatorium

Facility for: Swimming

Facility description:

- 3,000 sq m
- One 8-lane 50m x 21m x 1.8m swimming pool
- One 50m x 25m swimming pool
- Advanced filter and disinfection system
- Weight training room, showers, changing rooms and toilets



Interior of Shenyang Natatorium

Shenyang Sports School Football Field

Facility for: Football

Facility description:

- Covering 250,000 sq m
- One 105m x 68m football field
- 400m standard synthetic track of 8 lanes
- Weight training room, showers, changing rooms and toilets



A full view of the football field



The football field

Shenyang Physical Education Institute Football Field

Facility for: Football

Facility description:

- Constructed based on the Hanqing Stadium of former Northeast University, which was built in 1928 and regarded as the no.1 stadium in the Far East region
- 400m synthetic tracks
- One 105m x 68m standard natural turf field
- Weight training room, showers, changing rooms and toilets



DALIAN CITY

Area: 12,573 sq km

Population: 5.34 million

Longitude: 120°58'-123°31'E Latitude: 38°43'-40°10'N

Location: Southern tip of Liaodong Peninsula

Climate:

Marine, warm-temperate continental monsoon climate, without freezing winter or scorching summer, though with four distinctive seasons.

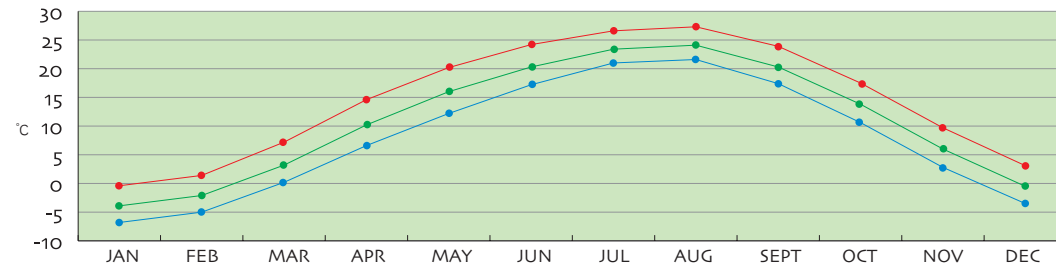
- Average annual temperature: 10.5°C

- Annual precipitation: 550-950 mm

Dalian is an important port and industrial, trade and tourist city in north China, having ready transport facilities. Dalian Port has business contacts with ports of more than 150 countries and regions around the world, and the Dalian International Airport has opened over 50 domestic and international air routes.

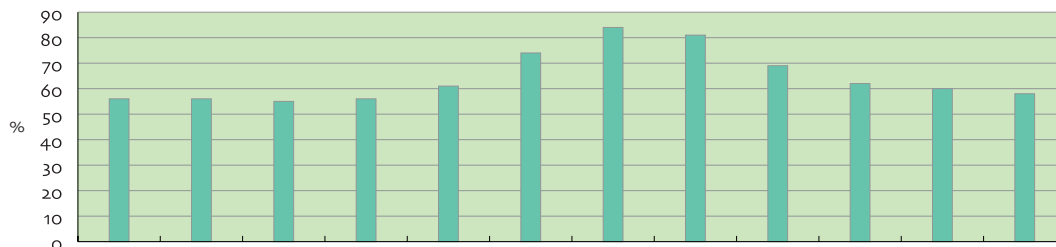


● AVERAGE MAX TEMP ● MEAN MONTHLY TEMP ● AVERAGE MIN TEMP



MONTHS	JAN	FEB	MAR	APR	MAY	JUN	JUL	AUG	SEPT	OCT	NOV	DEC
AVERAGE MAX TEMP (°C)	-0.4	1.4	7.2	14.6	20.2	24.2	26.6	27.3	23.9	17.5	9.7	3.1
MEAN TEMP (°C)	-3.9	-2.1	3.2	10.2	16	20.3	23.4	24.1	20.3	13.8	6	-0.5
AVERAGE MIN TEMP (°C)	-6.8	-5	0.2	6.6	12.2	17.2	21	21.6	17.4	10.6	2.8	-3.5

● HUMIDITY



MONTHS	JAN	FEB	MAR	APR	MAY	JUN	JUL	AUG	SEPT	OCT	NOV	DEC
AVERAGE HUMIDITY (%)	56	56	55	56	61	74	84	81	69	62	60	58



A panoramic view of the water sports area

Lying by the seaside, Dalian features uniquely charming landscapes, having the world-renowned Snake Island and Bird Island.

Lushun Aquatic Sports Center

Facility for: Rowing

Facility description:

- A 2,300m x 170m area for water sports
- Boat storage areas, command towers at the finish, and wharfs
- Weight training room showers, changing rooms and toilets



Xinghai Bay beach

Dalian Xinghaiwan Square

Facility for: Beach volleyball

Facility description:

- 850,000 sq m, the largest city square in Asia
- A 10,000 sq m wonderful beach of fine sands at Xinghai Bay
- Showers and changing rooms

Dalian Natatorium

Facility for: Swimming

Facility description:

- 24,000 sq m, with a floor area of 20,000 sq m
- Standard swimming pools and diving pools
- All supporting equipment
- Weight training room, showers, changing rooms and toilets

Dalian Chinese Wushu Academy

Facility for: Wrestling

Facility description:

- 4,683 sq m
- Two standard wrestling mats
- Weight training room, showers, changing rooms and toilets



Interior of Dalian Chinese Kongfu Training Center

ANSHAN CITY

Area: 9,252 sq km

Population: 3.442 million

Longitude: 122°10'-123°13'E Latitude: 40°27'-41°34'N

Location: Central part of Liaoning Province

Climate:

Warm-temperate continental monsoon climate featuring plenty of rainfall and sunshine, four distinctive seasons without freezing winter or scorching summer.

Anshan is adjacent to the port city of Dalian on the south and the provincial capital city of Shenyang on the north, having convenient transport facilities. It is also one of the famous tourist cities in north China.



Anshan Military Sports School

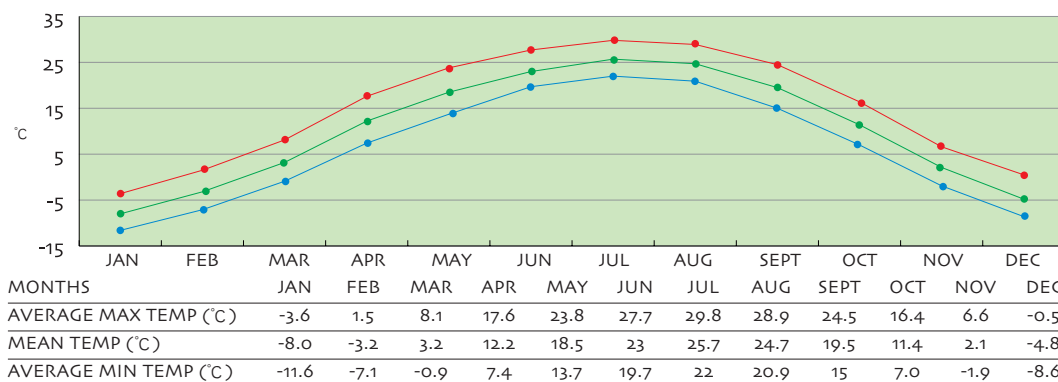
Facility for: Shooting (air weapons and clay shooting)

Facility description:

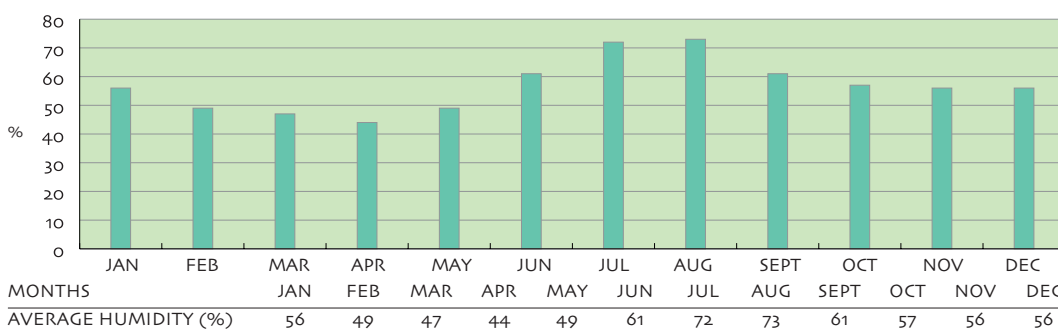
- A hall with 45 shooting positions for air weapons



● AVERAGE MAX TEMP ● MEAN MONTHLY TEMP ● AVERAGE MIN TEMP



● HUMIDITY





Anshan Gymnasium

- A 8,000 sq m clay target range
- Two traps for skeet and trap events
- Weight training room, showers, changing rooms and toilets

Anshan Sports Center

Facility for: Table tennis

Facility description:

- 3,000 sq m, 7,000 seats
- 30 standard table tennis tables
- Weight training room, showers, changing rooms and toilets

Anshan Natatorium

Facility for: Swimming

Facility description:

- 16,000 sq m, 2,000 seats
- 50m standard pool with 10 lanes
- Weight training room, showers, changing rooms and toilets



Interior of the natatorium

BENXI CITY

Area: 8,348 sq km

Population: 1.56 million

Longitude: 123°34'-125°46'E Latitude: 40°49'-41°35'N

Location: Southeast of the Liaodong Peninsula

Climate:

Lying in the intermediate temperate zone, features a humid climate.

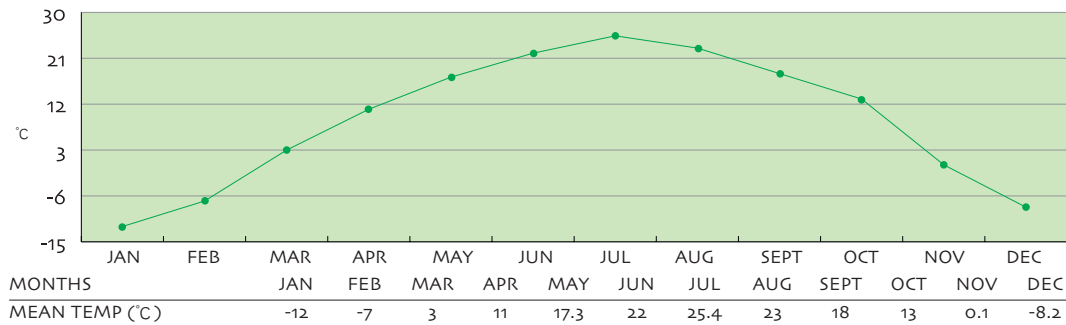
- Average annual temperature: 6.1-7.8°C

- Annual precipitation: 800-900 mm

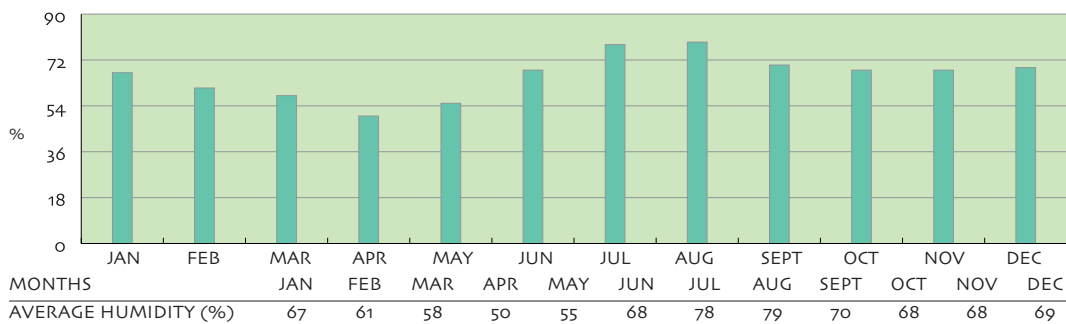
Benxi is a mountain city with picturesque landscape. Its main scenic spots include the Benxi Water Cave, a large karst cave formed millions of years ago, which is considered the largest of its kind in Asia.



MEAN MONTHLY TEMP



HUMIDITY





A panoramic view of Guanmenshan Scenic Area

Guanmenshan Scenic Area

Facility for: Road and cross-country cycling

Facility description:

- Road and cross-country cycling training center in the Benxi Manchu Autonomous County
- 48 km away from the city proper of Benxi
- 20 km x 12m asphalt road for cycling training
- Security and light traffic
- Complete accommodation and meal conditions
- Showers, changing rooms and toilets