

SHAANXI PROVINCE

Area: 205,800 sq km

Population: 36.895 million

Longitude: 105°29'-110°15'E Latitude: 31°42'-39°35'N

Location: Along the middle reaches of the Yellow river and in the eastern part of northwest China

Elevation: 500 m above sea level in average

Average annual temperature: 13.6°C

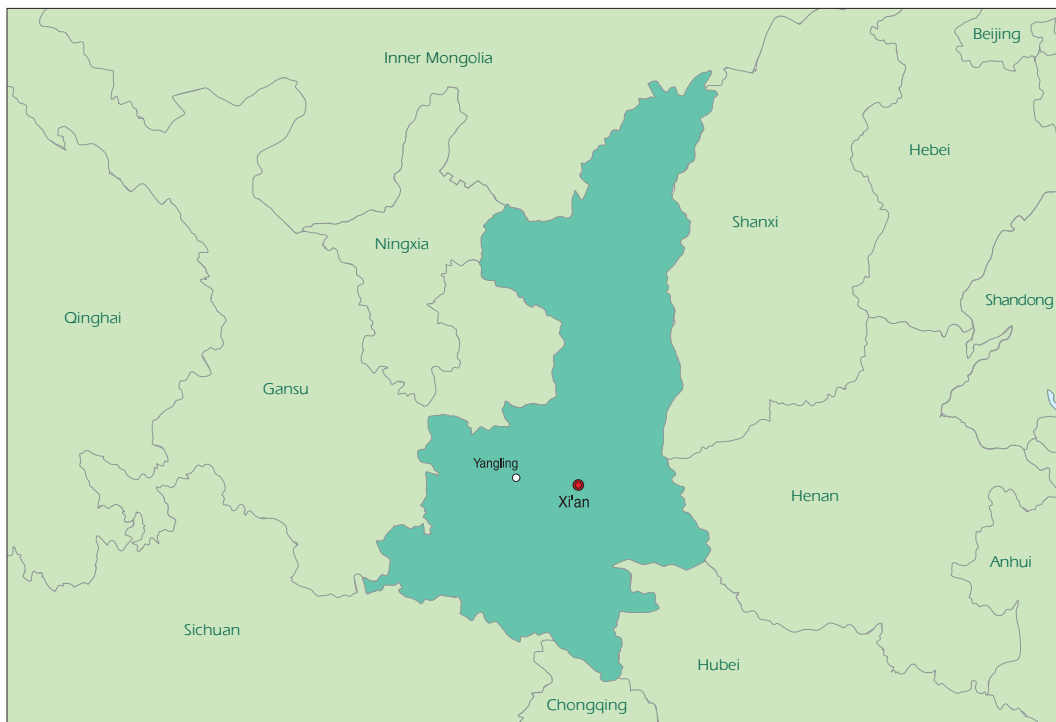
Shaanxi Province is one of the important origins of the Chinese nation and Chinese civilization. It is the starting point of the famous ancient Silk Road. The Mausoleum of Qinshihuang, the first emperor in Chinese history, and the terracotta warriors and horses found there, known as the "Eighth Wonder" in the world, are listed by the United Nations Educational, Scientific and Cultural Organization as a world cultural heritage site. The 72 royal tombs of different dynasties in the province are good evidence of the social, economic and cultural development of their time. The Mausoleum of King Huangdi in



Hukou Waterfall



Huangling County serves as a symbol of the unity of the Chinese nation. The Yongle Town, Jingyang County in the province is the datum point of the Chinese land. Famen Temple that houses a finger bone of Sakyamuni, the founder of Buddhism, enjoys worldwide reputation.



C

342

XI'AN

Area: 9,983 sq km

Population: 6.5487 million

Longitude: 107°40'-109°49'E Latitude: 33°39'-34°45' N

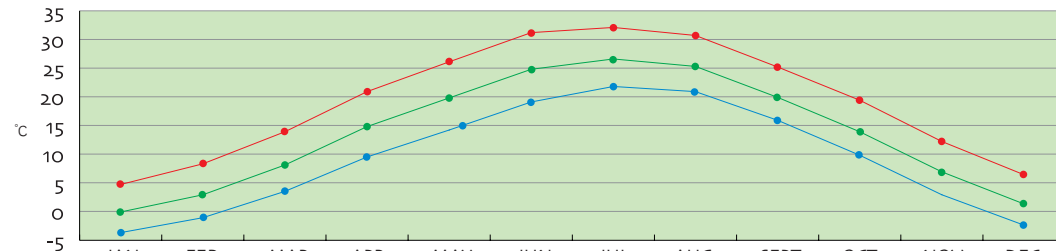
Location: Guanzhong Basin in the central part of Yellow River valley

Climate: Warm temperate continental monsoon climate.

Average annual Temperature: 13.3°C

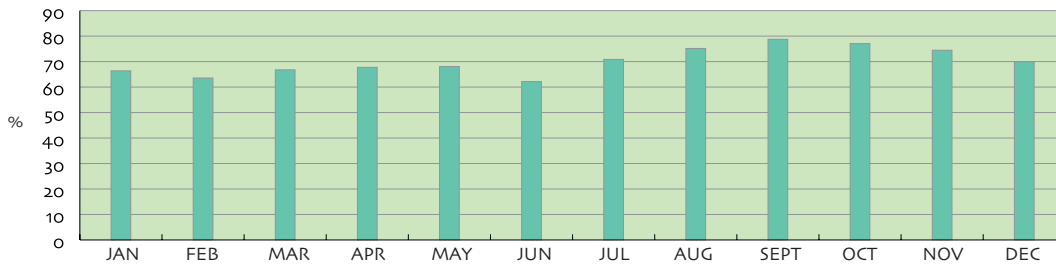
Xi'an, called Chang'an in ancient time, has had a history of more than 3,100 years. It is one of the four ancient state capitals in the world. The terracotta warriors and horses of the Qin Dynasty (221-206 B.C.), known as the "Eighth Wonder" in the world, and the intact Ming Dynasty city wall (1368-1644) are all valuable historical relics in Xi'an. The Silk Road, the first trade road linking East and West, started from the city.

● AVERAGE MAX TEMP ● MEAN MONTHLY TEMP ● AVERAGE MIN TEMP



MONTHS	JAN	FEB	MAR	APR	MAY	JUN	JUL	AUG	SEPT	OCT	NOV	DEC
AVERAGE MAX TEMP (°C)	4.7	8.3	13.9	20.9	26.1	31.2	32.1	30.7	25.2	19.4	12.2	6.4
MEAN TEMP (°C)	-0.1	2.9	8.1	14.8	19.8	24.8	26.6	25.3	19.9	13.9	6.9	1.3
AVERAGE MIN TEMP (°C)	-3.7	-1.1	3.5	9.5	14.2	19.1	21.8	20.9	15.9	9.8	2.9	-2.4

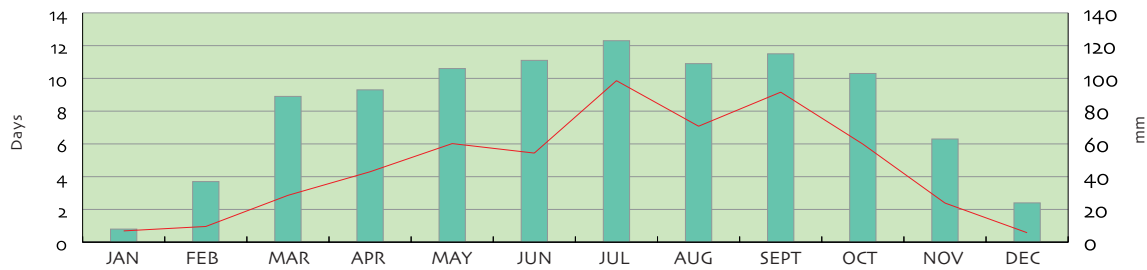
● HUMIDITY



MONTHS	JAN	FEB	MAR	APR	MAY	JUN	JUL	AUG	SEPT	OCT	NOV	DEC
AVERAGE HUMIDITY (%)	66.3	63.5	66.7	67.7	68	62.1	70.8	75.1	78.7	77	74.4	69.2

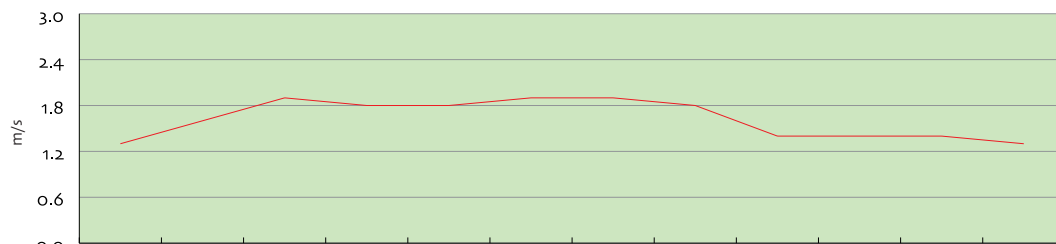


● RAINFALL DAYS ● AMOUNT OF RAINFALL



MONTHS	JAN	FEB	MAR	APR	MAY	JUN	JUL	AUG	SEPT	OCT	NOV	DEC
RAINFALL DAYS	0.8	3.7	8.9	9.3	10.6	11.1	12.3	10.9	11.5	10.3	6.3	2.4
AMOUNT OF RAINFALL (mm)	6.9	9.6	28.6	43	60.2	54.4	98.6	70.8	91.6	59.9	23.9	5.8

● PREVAILING WIND DIRECTION AND AVERAGE STRENGTH



MONTHS	JAN	FEB	MAR	APR	MAY	JUN	JUL	AUG	SEPT	OCT	NOV	DEC
STRENGTH (m/s)	1.3	1.6	1.9	1.8	1.8	1.9	1.9	1.8	1.4	1.4	1.4	1.3
PREVAILING DIRECTION	NE	NE	NE	NE	NE	NE	NE	NE	NE	NE	NE	NE



Terracotta warriors and horses

C

344

Shaanxi Provincial Swimming Center Natatorium

Facility for: Swimming and diving

Facility description:

- One 50m x 25m x 2m standard swimming pool
- One 25m x 21m x 5m standard diving pool
- One 25m x 25m training pool
- Weight training room, showers, changing rooms and toilets

Shaanxi Rhythmic Gymnastics Training Gymnasium

Facility for: Rhythmic gymnastics

Facility description:

- 15m x 15m mats
- Weight training room, showers, changing rooms and toilets



Interior of the Shaanxi Provincial Swimming Center Natatorium



Shaanxi Rhythmic Gymnastics Training Gymnasium



Shaanxi Provincial Shooting Range

Shaanxi Provincial Stadium

Facility for: Track and field

Facility description:

- Standard synthetic track of 8 lanes
- Auxiliary track of 4 lanes
- Weight training room, showers, changing rooms and toilets

Shaanxi Provincial Shooting Range

Facility for: Shooting

Facility description:

- 25m shooting range with 12 groups of revolving targets
- 50m shooting range with 60 shooting positions
- 10m shooting range with 60 shooting positions
- 10m running target range with 5 sets of running targets
- Three clay target ranges
- Weight training room, showers, changing rooms and toilets



Shaanxi Provincial Stadium

Shaanxi Olympic Sports Park

Facility for: Track and field, judo and boxing

Facility description:

- One track and field hall
- One athletic ground with synthetic track of 8 lanes with complete athletic equipment
- Two athletic grounds with track of 6 lanes
- One judo hall of 700 sq m in floor space with two 14m x14m mats
- One boxing hall of 700 sq m in floor space with two boxing rings
- Weight training room, showers, changing rooms and toilets

Xi'an Sports Center Gymnasium

Facility for: Basketball

Facility description:

- Central court of 62m in length and 37m in width
- Weight training room, showers, changing rooms and toilets

C

346



Shaanxi Olympic Sports Park



Xi'an Sports Center Gymnasium



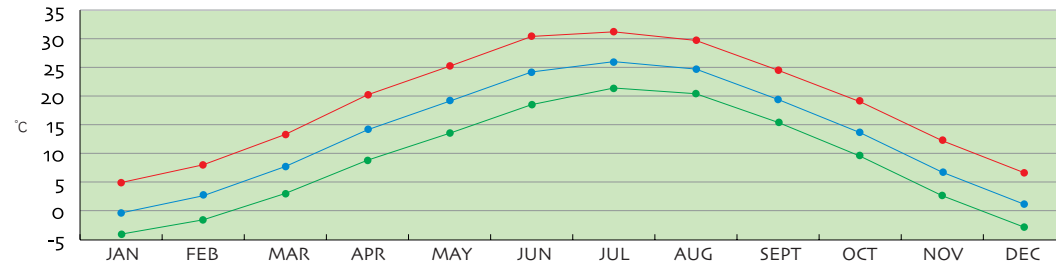
YANGLING

Location: In the central part of Guanzhong Plain and 70 km from Xianyang International Airport

Yangling, with a longstanding history, is the birthplace of the agricultural civilization of the Chinese nation. More than 4,000 years ago, Houji, the agricultural forefather of the Chinese nation, taught people farming and arboricultural techniques here.

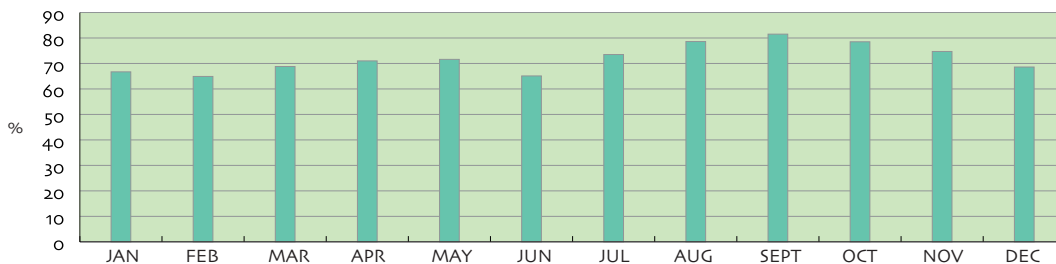


● AVERAGE MAX TEMP ● MEAN MONTHLY TEMP ● AVERAGE MIN TEMP



MONTHS	JAN	FEB	MAR	APR	MAY	JUN	JUL	AUG	SEPT	OCT	NOV	DEC
AVERAGE MAX TEMP (°C)	4.9	8.0	13.3	20.2	25.2	30.4	31.2	29.7	24.5	19	12.2	6.6
MEAN TEMP (°C)	-0.4	2.6	7.7	14.1	19.1	24.2	26	24.7	19.4	13.6	6.7	1.1
AVERAGE MIN TEMP (°C)	-4.1	-1.6	3.0	8.8	13.5	18.5	21.4	20.4	15.4	9.5	2.6	-2.9

● HUMIDITY



MONTHS	JAN	FEB	MAR	APR	MAY	JUN	JUL	AUG	SEPT	OCT	NOV	DEC
AVERAGE HUMIDITY (%)	66.7	64.9	68.8	71	71.6	65.1	73.5	78.6	81.5	78.3	74.7	68.6



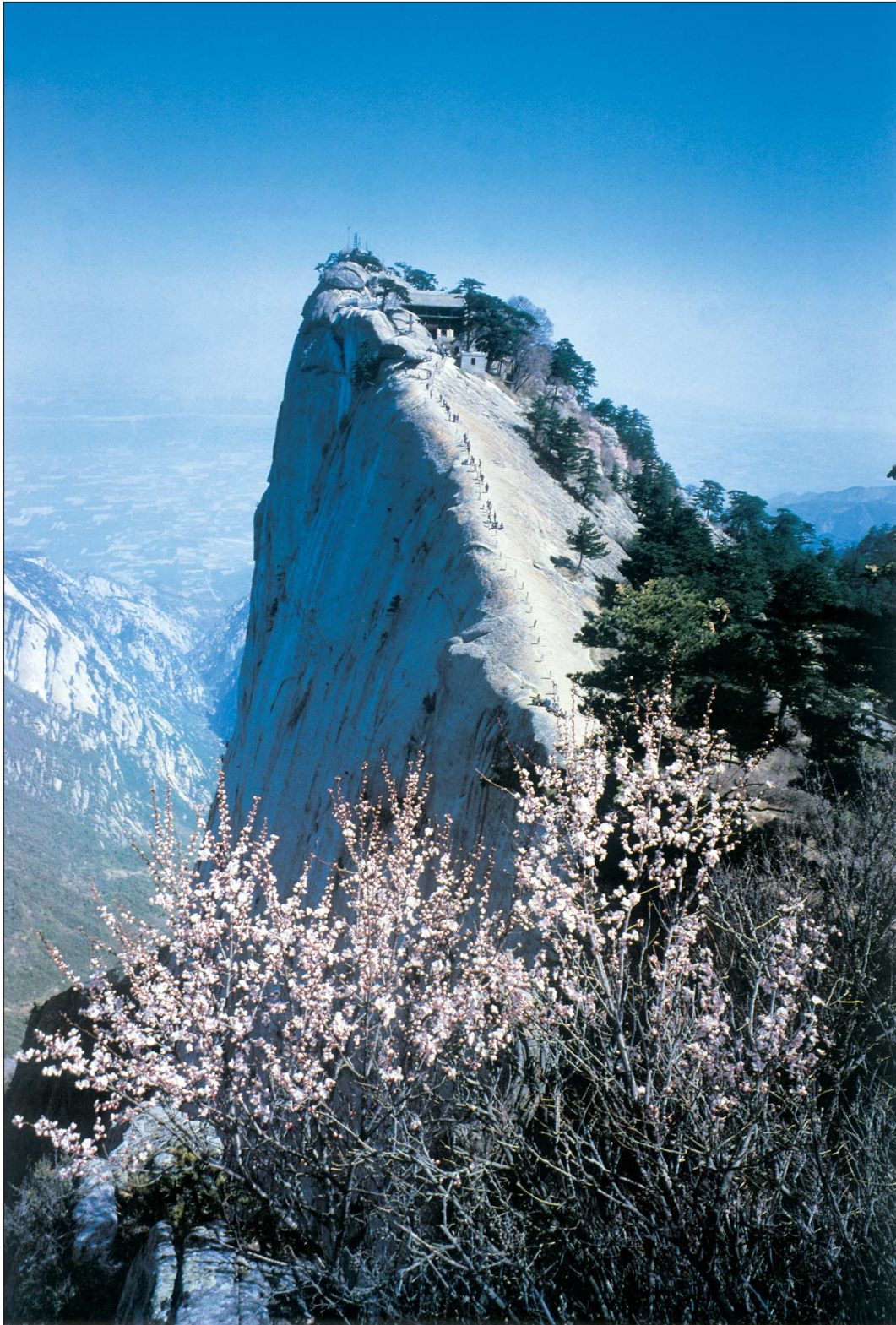
Shaanxi Aquatic Sports Center

Shaanxi Aquatic Sports Center

Facility for: Rowing, canoe/kayak

Facility description:

- 2,235m main competition course, with average width of 200m and normal depth of 4-5m
- Four fixed docks and one floating pier
- Weight training room, showers, changing rooms and toilets



Mount Huashan