

PROMPT
GUIDES



5 days



5-day Paris City Guide

A preplanned step-by-step time line
and city guide for Paris.
Follow it and get the best of the city.



Other Destinations

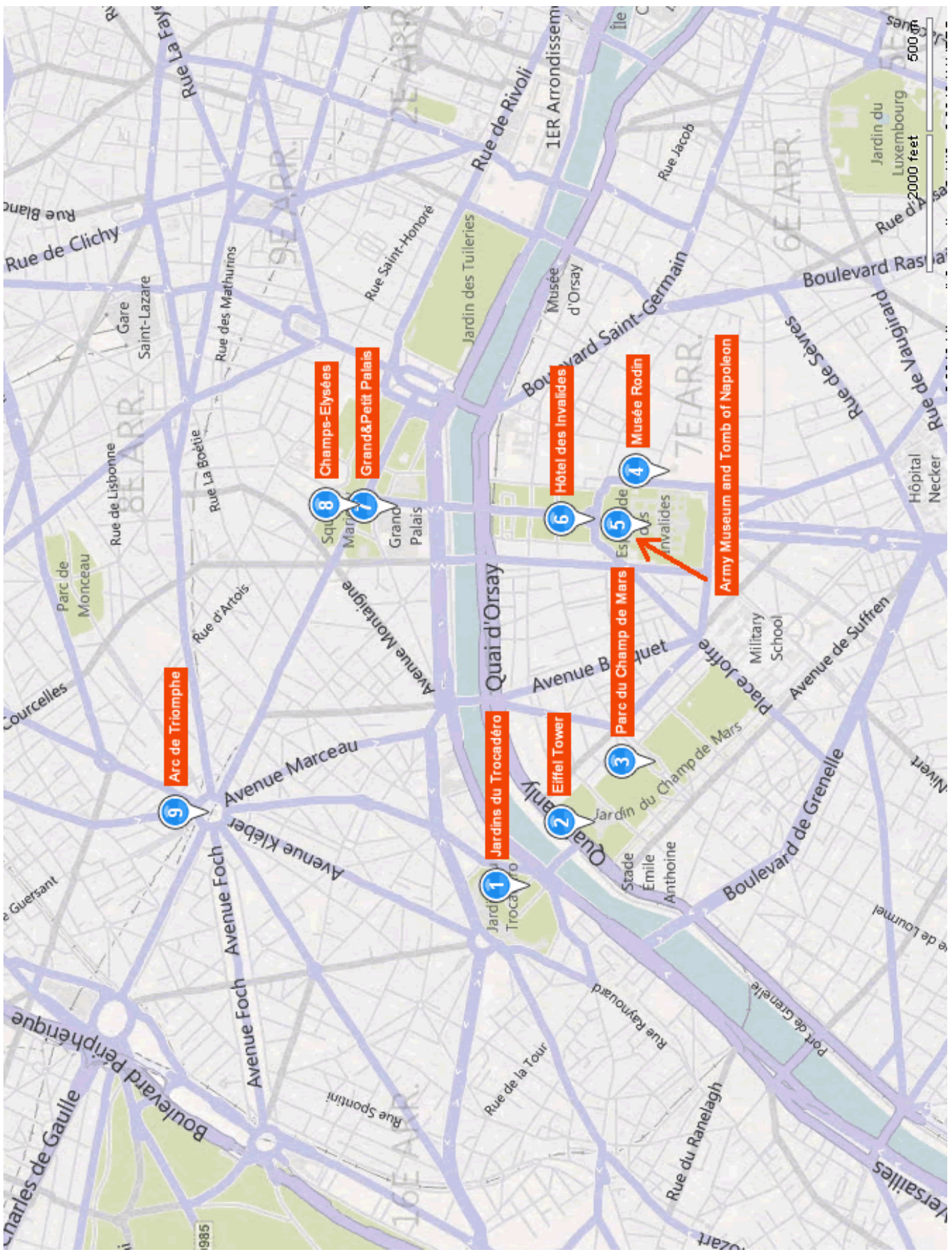
London, Barcelona, Paris, Boston, Athens, Amsterdam, Rome, Budapest ...and more

[See all PromptGuides destinations >](#)

Overview of Day 1

	LEAVE HOTEL	Tested and recommended hotels in Paris >	
	Take Metro line 6 or 9 to Trocadero station		
09:00-09:20	Trocadéro Gardens	Romantic gardens	Page 5
	Take a walk through bridge Pont d'Iéna - 10'		
09:30-11:30	Eiffel Tower	The most spectacular view of Paris	Page 5
11:30-12:00	Parc du Champ de Mars	Great view on the Eiffel tower	Page 6
	Take a walk on Avenue de Tourville to Musée Rodin - 20'		
12:20-13:40	Musée Rodin	The famous The Thinker is on display	Page 6
	Lunch time		
	Take a walk to the Army Museum and Tomb of Napoleon		
14:45-16:15	Army Museum and Tomb of Napoleon	One of the largest collections of military objects	Page 6
16:15-16:45	Hotel des Invalides	Impressive building complex	Page 7
	Take a walk through bridge Alexandre III - 15'		
17:00-17:20	Grand and Petit Palais	Grand Palais has a splendid glass roof	Page 7
17:20-18:20	Champs-Élysées	One of the most famous streets in the world	Page 7
	Take a walk to Arc de Triomphe - 10'		
18:30-19:15	Arc de Triomphe	Breathtaking views of Paris	Page 8
	END OF DAY 1		

Overview of Day 1



Attraction Details

09:00-09:20

Trocadéro Gardens (11, place du Trocadéro)



THINGS YOU NEED TO KNOW

- Trocadéro Gardens is a 10-ha (25-acre) public garden opposite Eiffel tower on the other side of the Seine
- The building on the north end is called Chaillot Palace (Palais de Chaillot)
- The park descends gently from the palace to the Seine and the Pont d'Iéna
- Beautiful trees, quiet walkways and bridges over small streams make it a romantic place to take a stroll
- The highlight of the park is the rectangular pool lined with stone and bronze statues
- The park was established in 1937 for the International Exposition dedicated to Art and Technology in Modern Life

THINGS TO DO THERE

- Walk along the romantic garden
- Admire the statues, fountains, and the flowering trees
- It is one of the best spots for taking the unmissable photo of the Eiffel tower

TIPS & INSIGHTS

- The park offers an excellent view on the Eiffel Tower

[MORE Info and Photos >](#)

09:30-11:30

Eiffel Tower (5, avenue Anatole France, 75007 Paris)

Opening hours: Elevators daily: 9:30am - 11:45pm, Steps daily: 9:30am - 6:30pm, Elevators and steps from June 18 to August 28: 9:30am - 12:45am • **Admission:** 13.1 €

THINGS YOU NEED TO KNOW

- Paris' iconic Eiffel Tower is an iron lattice tower built in 1889 for the Universal Exhibition
- The tower got its name after its builder, Gustav Eiffel, who also created the framework for the Statue of Liberty
- The tower was built temporarily among much controversy, but soon became Paris' main tourist attraction
- With its 324 m it used to be the world's tallest building until 1931 (Empire State Building) and it remains the tallest in Paris
- It is so sound that it never sways more than 7 cm (2.5 in) in strong winds

THINGS TO DO THERE

- Visit the information area on the first floor to get the history of the tower
- Enjoy the beautiful view of Paris from the second floor
- Explore the top level with some more breathtaking views of Paris

TIPS & INSIGHTS

- The Eiffel Tower has 3 floors. Before buying your ticket you have to decide whether you only want to go to the second floor or you want to visit the top floor as well

- You have two options for getting to the first and the second floor: take the stairs or the elevator
- To get to the top floor you have to take an elevator from the second floor (there is no direct elevator from ground level to the top floor)
- On the second deck usually there is a line to the elevator to the top
- If you [buy your ticket online](#) you can jump the queue only at the main entrance (go straight to the reserved entrance), but from the second floor the elevator to the top is the same line for everyone (in case of bad weather the access might be restricted)
- The lines seem to be shorter at night and the tower and city are beautifully illuminated
- At the second floor you can enjoy a special meal in Le Jules Verne restaurant. You will need to reserve in advance (+33) 1 45 55 61 4. It has its own elevator so you don't have to pay the tower fee and wait in line to reach this restaurant

[MORE Info and Photos >](#)



Attraction Details

11:30-12:00

Parc du Champ de Mars**THINGS YOU NEED TO KNOW**

- Parc du Champ de Mars is a nice public park between Eiffel tower and the Military School (L'Ecole militaire)
- It was built in the 18th century short after the Military School was finished
- The park is named after the Campus Martius (Mars Field) in Rome, a tribute to the Roman god of war
- A number of demonstrations were held here. 300,000 people celebrated the 1st anniversary of the fall of the Bastille in 1790

- It is also the site of the 1867, 1878, 1889, 1900 and 1937 Universal Expositions

THINGS TO DO THERE

- Take a walk in the gardens
- It is one of the best spots for taking the unmissable photo of the Eiffel tower

TIPS & INSIGHTS

[MORE Info and Photos >](#)

12:20-13:40

Musée Rodin (79, rue de Varenne, 75007 Paris)**THINGS YOU NEED TO KNOW**

- Rodin Museum (Musée Rodin) is an art museum displaying masterpieces of sculptor Auguste Rodin
- Rodin is best known for this famous sculpture The Thinker
- The museum is housed in Hotel Biron, a splendid 18th-century mansion where he last lived
- The Kiss, Eve, The Thinker and The Gates of Hell, his greatest works, can all be seen on the premises
- Another highlight is Rodin's personal collections of paintings including Van Gogh, Monet and other masters
- The garden is the 3rd largest private garden in Paris

THINGS TO DO THERE

- Start your visit in the gardens of the Musée Rodin and discover the great Rodin sculptures
- Enter the beautiful 18th-century mansion housing the great collection

TIPS & INSIGHTS

- Visiting only the gardens costs 1 €
- You can save money by purchasing the Musée d'Orsay-Musée Rodin combined ticket for 12 € (both museums must be visited on the same day)

[MORE Info and Photos >](#)

14:45-16:15

Army Museum and Tomb of Napoleon (Place des Invalides, 75007 Paris)

Opening hours: April 1 - September 30: 10am - 6:30pm, October 1 - March 31: 10am - 5pm, First Monday of each month: Closed, Jan 1, May 1, Nov 1 and Dec 25: Closed • **Admission:** 9 €

THINGS YOU NEED TO KNOW

- Musée de l'Armée (Army Museum) contains one of the largest collections of military objects in the world
- The weaponry ranges from prehistoric times to the end of World War II
- The Oriental gallery features some of Napoleon's objects (saddle for the Coronation, his sword, etc)
- Napoleon's remains were brought here from St Helena in 1840, some 19 years after he died
- He lies in a sarcophagus that contains six coffins of soft iron, mahogany, lead (2), ebony, and oak
- The heavy bronze door of Napoleon's crypt was forged from cannons taken at the battle of Austerlitz
- He is dressed in his Colonel's uniform which bears his sash of the Légion d'Honneur. His hat rests on his legs

THINGS TO DO THERE

- Walk to the south side of the Hotel des Invalides (next to the Dome Church) to reach the ticket office
- Enter the Dome Church and make sure to collect your free audioguide
- Visit Napoleon's Tomb in the spectacular Dome Church
- Continue your visit in the Army Museum

TIPS & INSIGHTS

- One single ticket gives access to the following museums: Musée de l'Armée, Tomb of Napoleon I, Historical Charles de Gaulle (closed on Mondays), Scale-Models Museum, and Order of the Liberation Museum

[MORE Info and Photos >](#)



16:15-16:45

Hotel des Invalides (Place des Invalides, 75007 Paris)

Opening hours: April 1 - September 30: 10am - 6pm, October 1 - March 31: 10am - 5pm, First Monday of each month: Closed, Jan 1, May 1, Nov 1 and Dec 25: Closed • **Admission:** 9 €



THINGS YOU NEED TO KNOW

- Hotel des Invalides is a magnificent building complex dedicated to France's military history
- It was built between 1671-78 by King Louis XIV as a military hospital and a showcase of the country's military power
- Napoleon is buried here. His tomb is located right under the golden dome of the Dome Church
- Musée de L'Armée (Military Museum) displays historic weaponry and armor worn by kings (including Louis XIV)
- Musée des Plans Reliefs exhibits the collection of scale model cities used for planning military attacks by military engineer Vauban
- Some part of the complex still accommodates military offices

THINGS TO DO THERE

- Admire the magnificent building from the square in front of the main entrance
- Enter the impressive cobbled courtyard
- Head to the opposite side of the building complex and have a glimpse of the Dome church

TIPS & INSIGHTS

- One single ticket gives access to the following museums: Musée de L'Armée, Tomb of Napoleon I, Historical Charles de Gaulle (closed on Mondays), Scale-Models Museum, and Order of the Liberation Museum

[MORE Info and Photos >](#)

17:00-17:20

Grand and Petit Palais (3, Avenue du Général-Eisenhower, 75008, Paris)

Opening hours: Grand Palais daily: 10am - 8pm, Tuesday: Grand Palais closed, Jan 1, May 1 and Dec 25: Grand Palais closed, Petit Palais daily: 10am - 5:40pm, Monday: Petit Palais closed

THINGS YOU NEED TO KNOW

- Grand Palais and Petit Palais were built for the 1900 Universal Exhibition
- They functioned as exhibition halls
- Their façades are a mix of Art Nouveau ironwork, Classical stone columns and a mosaic frieze
- Grand Palais is famous for its splendid glass roof
- Grand Palais hosts temporary art exhibitions
- Petit Palais gives home to the Fine Art Museum of Paris (Musée des Beaux Arts de la Ville de Paris)

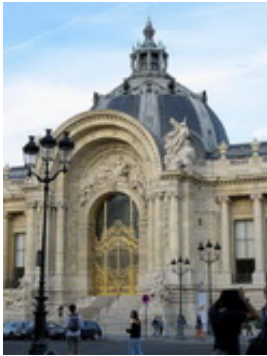
- The museum features medieval and Renaissance art, 18th-century furniture and a collection of 19th century paintings

THINGS TO DO THERE

- Walk around and take some photos of the buildings

TIPS & INSIGHTS

[MORE Info and Photos >](#)



17:20-18:20

Champs-Élysées

THINGS YOU NEED TO KNOW

- Champs-Élysées (Elysian Fields) is one of the best known avenues in the world connecting Arc de Triomphe and Place de la Concorde
- It came into existence when the royal gardener, André Le Nôtre, planted trees beyond the border of the Tuileries Garden
- First it was called Grand Cours (Great Way)
- It earned prominence and became the prime place of socializing and entertainment in the mid-19th century
- Since Napoleon's funeral in 1840 it became the route for state funerals, processions, parades and city events

- The Rond Point des Champs-Élysées is the nicest part featuring chestnut trees and flower beds

THINGS TO DO THERE

- Walk along the famous street
- Do some shopping or relax in a café

TIPS & INSIGHTS

[MORE Info and Photos >](#)



Attraction Details

18:30-19:15

Arc de Triomphe (Place Charles-de-Gaulle, 75008 Paris)

Opening hours: April 1 - September 30: 10am - 11:00pm, October 1 - March 31: 10am - 10:30pm, Jan 1, May 1, May 8 (morning), July 14 (morning), Nov 11 (morning) and Dec 25: Closed • **Admission:** 9 €

**THINGS YOU NEED TO KNOW**

- Arc de Triomphe is the world's largest triumphal arch
- It was commissioned by Napoleon in 1806 and completed in 1836
- It commemorates the victories of Napoleon's army
- Names of his generals are engraved in the arch; the underlined ones died in battles
- In the center burns the eternal flame on the Tomb of the Unknown Soldier, a World War I victim buried on 11 November 1920
- Napoleon's funeral procession passed under the arch; since then it is a focal point of state funerals
- This is the central arch of 3 arches that form the 8 km-long (5 mile) Grand Axe (Great Axis) that connects Louvre with La Défense

THINGS TO DO THERE

- Take the underpass to access the arch. Never attempt to cross the chaotic and dangerous roundabout from the Champs Elysées!
- Climb the steps to the top of the Arch
- On the way up do not miss the small museum presenting the history of the monument
- Enjoy the sublime view of the 12 avenues starting from the arch

TIPS & INSIGHTS

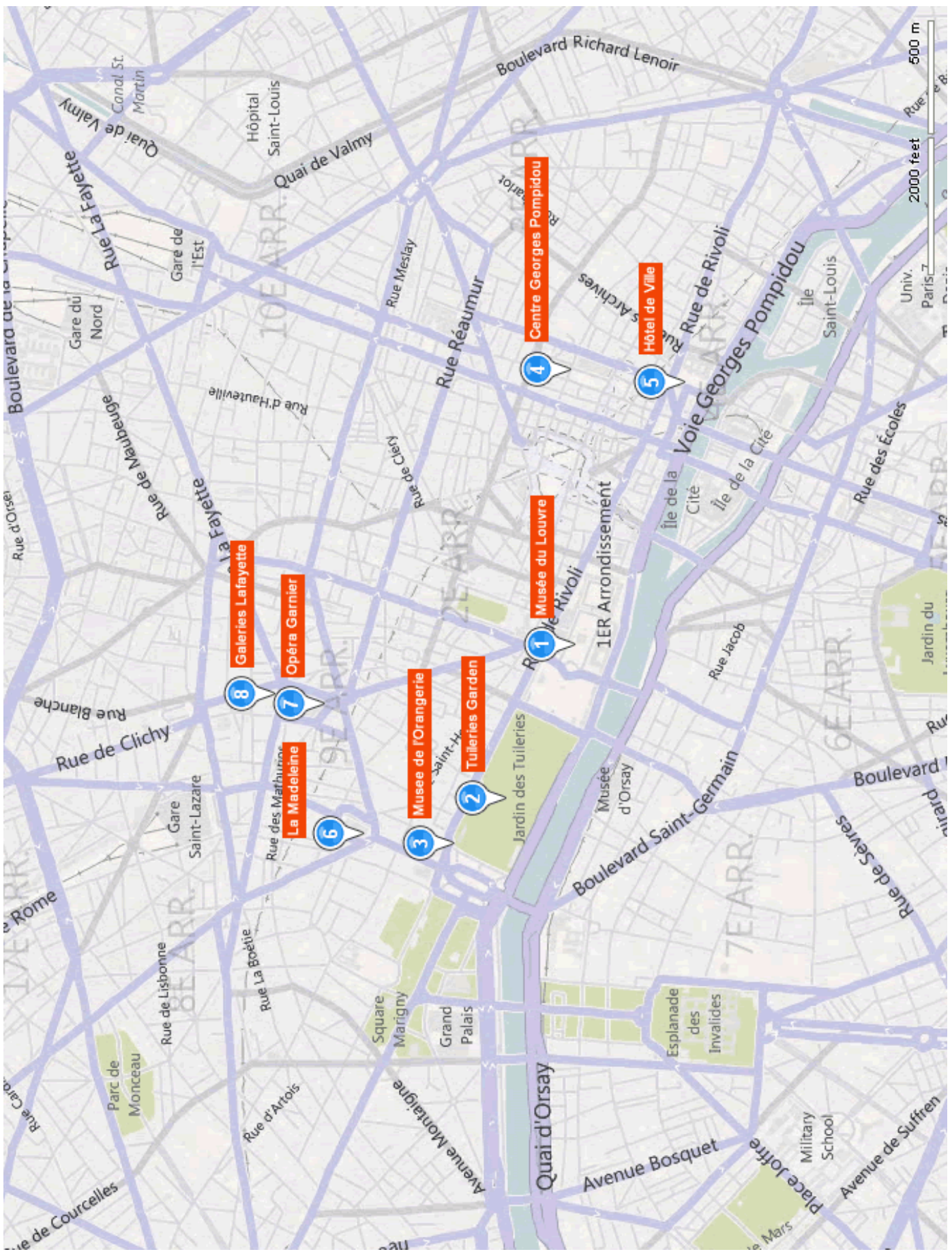
- The ticket office is located underground

[**MORE Info and Photos >**](#)

Overview of Day 2

	LEAVE HOTEL	Tested and recommended hotels in Paris >	
	Take Metro line 1 or 7 to Palais Royal Musée de Louvre station		
09:00-12:00	Musée du Louvre	The world's largest museum	Page 11
	Take a walk to Tuileries Garden		
12:00-12:30	Tuileries Garden	Beautiful public gardens	Page 11
	Take a walk to Musée de l'Orangerie		
12:30-13:30	Musée de l'Orangerie	Monet's Water Lillies series is on display	Page 12
	Lunch time		
	Take Metro line 11 to Rambuteau station		
15:00-15:30	Centre Georges Pompidou	Unique, futuristic building	Page 12
	Take a walk on Rue de Renard to Hotel de Ville - 15'		
15:45-16:15	Hotel de Ville	Beautiful Renaissance style building	Page 13
	Take Metro line 14 to Madeleine station (Direction: Saint-Lazare) - 30'		
16:45-17:05	La Madeleine	Roman Catholic church with a unique design	Page 13
	Take a walk to Opéra Garnier - 10'		
17:15-17:35	Opéra Garnier	Unbelievably ornamented opera house	Page 13
	Take a walk to Galeries Lafayette - 10'		
17:45-19:15	Galeries Lafayette	Amazing department store	Page 14
	END OF DAY 2		

Overview of Day 2



Attraction Details

09:00-12:00

Musée du Louvre (rue de Rivoli, 75001 Paris)

Opening hours: Mon, Thurs, Sat, Sun: 9am - 6pm, Wed, Fri: 9am - 10pm, Tuesday: Closed, May 1, Dec 25, Jan 1: Closed • **Admission:** 9.5 €



THINGS YOU NEED TO KNOW

- The Louvre is the most important museum of France and one of the world's best known museums
- King François I founded the museum in 1527 with 12 paintings looted from Italy (including the Mona Lisa and Virgin of the Rocks)
- Now more than 35 000 items are on display (antiquities, paintings, drawings, sculptures)
- The building used to be a royal palace that dates back to the 11th century
- The controversial glass pyramid was built in 1989
- Louvre is the world's largest museum

THINGS TO DO THERE

- Upon entering the museum take a museum map or rent an audio guide (costs 6 €) because all descriptions are in French
- Make your way straight up to the 2nd floor and work your way down viewing all the collections as you go. Most people start at the bottom and go upwards so you can be held up
- Make sure not to miss Venus de Milo, The Turkish Bath, The Card Sharper, The Lacemaker, Winged Victory of Samothrace, Mona Lisa and the Virgin of the Rocks

TIPS & INSIGHTS

- In order to avoid the long lines approach the museum from the Palais Royal Musée du Louvre metro station. The underground exit takes you directly to the gallery. There is a Tabac shop where you can buy your tickets. Enter the museum through 'Passage Richelieu' on rue Rivoli

- The other option to avoid the long lines is to go in through the pyramid down into the main lobby. Head straight for the ticket machines rather than the kiosks. The machines only take cash but are simple to use
- If you already have your ticket - bought it in advance or you have a museum pass - use either the 'Passage Richelieu' entrance located at 93 rue de Rivoli or 'Porte des Lions' entrance on the opposite side of the 'Passage Richelieu' entrance
- Be prepared that the museum is always very crowded; especially in front of the Mona Lisa and the Venus de Milo
- Visit in the evening on a late opening day (Wednesday and Friday). If you go after 6pm on these days the entrance fee is lower and you avoid the huge crowds and tourist groups

[MORE Info and Photos >](#)

12:00-12:30

Tuileries Garden (rue de Rivoli, 75001 Paris)



THINGS YOU NEED TO KNOW

- Tuileries Garden (Jardin des Tuileries) is a beautiful public park between Louvre and Place de la Concorde
- It features a number of pools, walkways and sensuous nude sculptures by Aristide Maillol (1861-1944)
- Originally it was the garden of the Tuileries Palace
- Tuileries Palace was built for Catherine de Medici in 1564 and burnt down by the Paris Commune of 1871
- It was the first royal garden open to the public (1667)

- The garden gives home to the Arc de Triomphe du Carrousel, erected by Napoleon in 1808
- The Jeu de Paume gallery and the Musée de l'Orangerie can also be found here

THINGS TO DO THERE

- Take a lovely walk through the gardens
- Relax by the pond
- Arrive to the Louvre Pyramid and enjoy the view of the river Seine

TIPS & INSIGHTS

[MORE Info and Photos >](#)

Attraction Details

12:30-13:30



Musée de l'Orangerie (Jardin des Tuileries, 75001 Paris)

Opening hours: Daily: 10am - 6pm, Tuesday: Closed, May 1 and Dec 25: Closed • **Admission:** 7.5 €

THINGS YOU NEED TO KNOW

- The Musée de l'Orangerie is an art gallery of impressionist and post-impressionist paintings
- Monet's water-lily series is showcased in the museum
- The other highlight of the museum is the The Walter-Guillaume collection (named after two art collectors)
- The collection includes paintings from Cézanne, Renoir, Picasso, Rousseau, Matisse, Derain, Modigliani, Soutine, Utrillo and Laurencin

THINGS TO DO THERE

- Start your visit on the ground floor where you can enjoy the collection of impressionist paintings by various artists

- Continue the tour at the top floor that presents Monet's 'Water Lilies' series in two oval rooms

TIPS & INSIGHTS

- English guided tour is available for individual visitors every Monday and Thursday at 2:30 pm (approximate duration: 1h30)
- You can save money by purchasing the Musée d'Orsay-Musée de l'Orangerie combined ticket for 13 € (this ticket is valid during 4 days)
- Audioguide is available for a fee of 5 €

[MORE Info and Photos >](#)

15:00-15:30



Centre Georges Pompidou (Place Georges Pompidou, Paris)

Opening hours: Daily: 11am - 9pm, Tuesday: Closed, May 1: Closed • **Admission:** 12 €

THINGS YOU NEED TO KNOW

- The Pompidou Center is a culture and leisure center opened in 1977
- It houses the Modern Art Museum (Musée National d'Art Moderne), Europe's largest of its kind
- The center was designed by Renzo Piano and Richard Rogers in high-tech architecture style
- It became famous for its unique architectural approach of having its structural elements on the outside
- It is named after Georges Pompidou, 2nd president of the 5th French Republic (1969-74), who decided its creation
- One of the most popular features of the building is the colorful, snake-like escalator
- The colorful Stravinsky Fountain was inspired by the composer's ballet The Firebird (1910): the bird spins and sprays water

THINGS TO DO THERE

- Admire the unique design of the impressive modern building
- Walk to the colorful Stravinsky Fountain on the right side of the building
- Head back to Pompidou Center and take the outside escalator up to the top level for a fantastic view of Paris

TIPS & INSIGHTS

- The entrance to the Modern Art Museum is on the fourth floor and to the cinema is on the first floor. Large signs usually indicate the whereabouts of temporary exhibitions

[MORE Info and Photos >](#)

15:45-16:15

Hotel de Ville (29, rue de Rivoli, 75004 Paris)**THINGS YOU NEED TO KNOW**

- Hotel de Ville is the town hall of Paris built from 1873 to 1892 in French Renaissance style
- Its site has been the location of Paris city halls since 1357
- Two previous buildings stood here (1357-1533, 1533-1871)
- The present building is a reconstructed of the former one that was burnt down by Common extremists in 1871
- From the outside it is an exact copy of the 16th-century building; from the inside it was newly designed based on standards of its time

- The square in front of the building, a pleasant place now, used to be a site of horrible executions
- The assassin of Henri IV, Ravaillac, was quartered here alive in 1610

THINGS TO DO THERE

- Enjoy the beautiful building from outside

TIPS & INSIGHTS

- In wintertime, an ice skating rink is built on the place de l'Hotel de Ville
- The building is beautifully illuminated in the night

[MORE Info and Photos >](#)

16:45-17:05

La Madeleine (place de la Madeleine, Paris)

Opening hours: Monday - Saturday: 7:30am - 7pm, Sunday: 8am - 7pm • **Admission:** Free

THINGS YOU NEED TO KNOW

- La Madeleine is a Neo-Classical Roman Catholic church
- The best-preserved Roman temple, The Maison Carrée at Nimes, inspired its design
- Originally it was planned as a temple to the glory of Napoleon's army, a cause blunted by the completion of Arc de Triomphe du Carrousel
- It was consecrated in 1842
- The building has 52 Corinthian columns (each 20 meter high) running around its entire exterior

- The pipe organ of the church is regarded as one of the best in Paris
- Frédéric Chopin's funeral was held here

THINGS TO DO THERE

- Discover the impressive church both from the inside and outside

TIPS & INSIGHTS

[MORE Info and Photos >](#)

17:15-17:35

Opéra Garnier (8, rue Scribe, 75009 Paris)

Opening hours: Daily: 10am - 5pm, Jan 1, May 1 and days of special events: Closed • **Admission:** 9 €

THINGS YOU NEED TO KNOW

- Opéra Garnier or Paris Opéra is an unbelievably ornamented opera house designed by Charles Garnier
- It used to be primary opera venue of Paris for more than 100 years (1875-1989)
- Napoleon III commissioned the building as part of the great Parisian reconstruction of the Second Empire
- Construction begun in 1862 and was completed 13 years later (1875)
- It has a 2200-seat auditorium
- Highlights include The Grande Staircase, The Grand Foyer and its ceiling, and the auditorium with a ceiling by Marc Chagall

- The opera house features an underground lake beneath the building inspired by Leroux's Phantom of the Opera

THINGS TO DO THERE

- Take some photos and enjoy the amazing building from outside

TIPS & INSIGHTS

- If you have the time, participate in a guided tour of the beautiful building. English guided tours: Wed, Sat and Sun 11.30 and 14.30. Duration: 90 min. Price: 12.5 €

[MORE Info and Photos >](#)



Attraction Details

17:45-19:15

Galleries Lafayette (40, boulevard Haussmann, 75009 Paris)**Opening hours:** Monday - Saturday: 9:30am - 8pm, Thursday: 9:30am - 9pm, Sunday: Closed**THINGS YOU NEED TO KNOW**

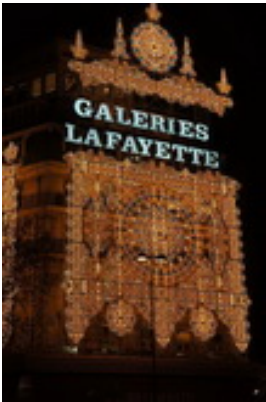
- Galleries Lafayette is a luxurious department store with an amazing selection of nearly everything
- Opened in 1894 it is a fine example of Belle Epoque architecture
- It was modeled after a Mideastern bazaar
- Cutting-edge designer collections, jewelry and accessories, home furnishings, and cosmetics are all sold here
- It features a fabulous gourmet food market, Lafayette Gourmet, which satisfies even the most critical foodies
- The 7th floor offers great views
- The building itself and its atmosphere make it worth visiting even for those who don't want to buy anything

THINGS TO DO THERE

- Enter the luxurious department store
- Discover the many exclusive shops
- Do not miss the stunning dome ceiling and balconies in the centre of the store
- Visit the Food Hall (Lafayette Gourmet)
- Finish your visit at the terrace on seventh floor for beautiful views

TIPS & INSIGHTS

- Essential stop for fashion enthusiasts

[**MORE Info and Photos >**](#)



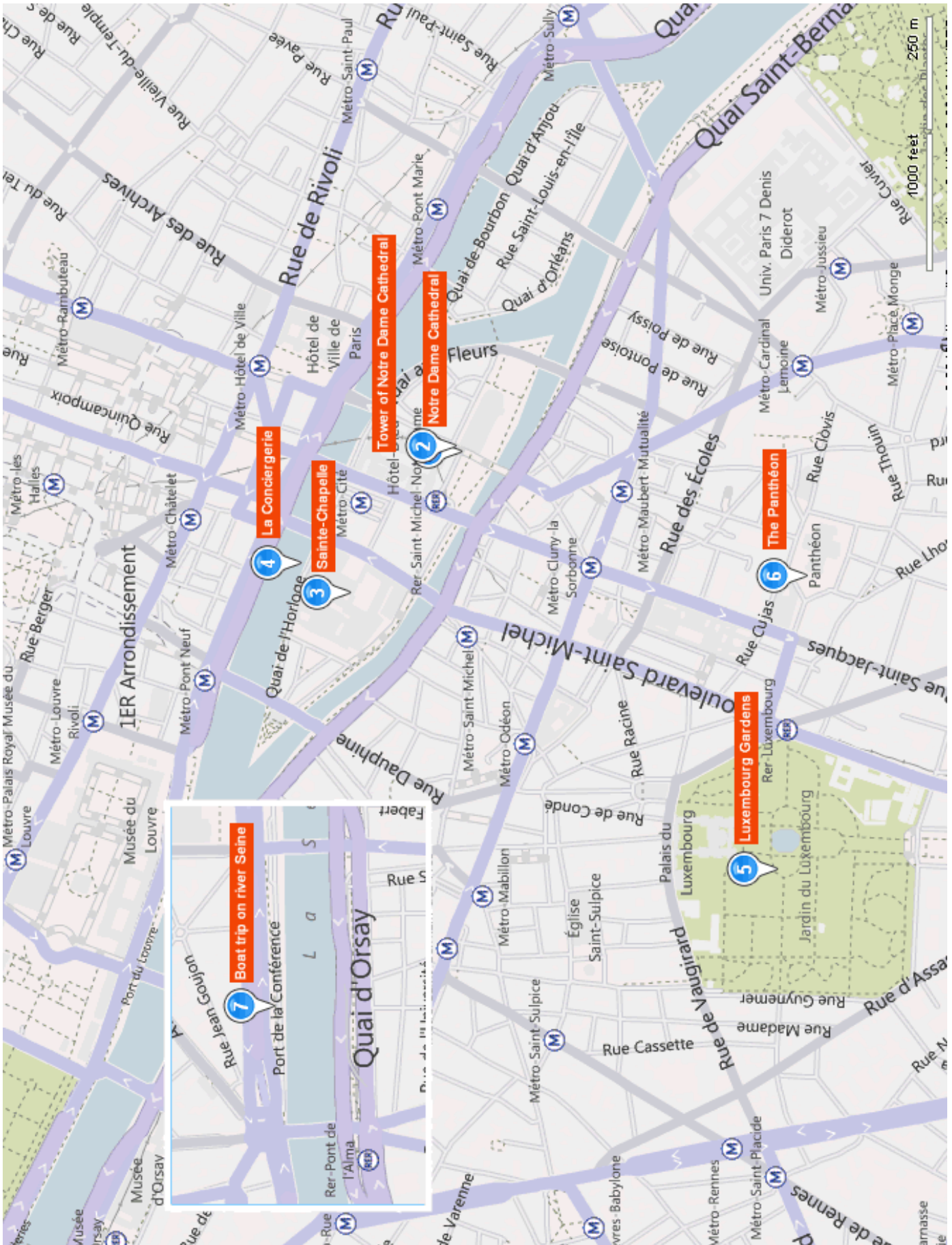
Spice up your holiday

Turn your regular holiday into something extraordinary

See all fun activities in Paris. [Click here >](#)

Overview of Day 3

	LEAVE HOTEL	Tested and recommended hotels in Paris >	
	Take Metro line 4 to Cite station		
09:00-10:00	Notre Dame Cathedral	UNESCO World Heritage site	Page 18
10:00-11:00	Tower of Notre Dame Cathedral	Spectacular views of Paris	Page 18
	Take a walk to Sainte-Chapelle - 10'		
11:10-11:55	Sainte-Chapelle	Beautiful stained glass windows	Page 19
	Take a walk to La Conciergerie- 10'		
12:05-12:50	La Conciergerie	Part of a World Heritage Site	Page 19
	Lunch time		
	Take RER B to Luxembourg station (Direction: Robinson or Saint-Rémy-les-Chevreuse)		
15:00-16:20	Luxembourg Gardens	Great place to relax and picnic	Page 19
	Take a walk to the Panthéon - 20'		
16:40-17:40	The Panthéon	Impressive monument	Page 20
	Take a walk to St-Michel Notre Dame station		
	Take RER c from St-Michel Notre Dame station to Pont de l'Alma station - 30 ' in all		
18:30-19:45	Boat trip on river Seine	Romantic experience	Page 20
	END OF DAY 3		



Attraction Details

09:00-10:00

Notre Dame Cathedral (6, Parvis Notre-Dame, 75004 Paris)

Opening hours: Daily: 8am - 6:45pm, Saturday, Sunday: 8am - 7:15pm • **Admission:** Free

THINGS YOU NEED TO KNOW

- A UNESCO World Heritage Site, Notre Dame is a Gothic cathedral on the Ile de la Cité
- It is the symbolic heart of the city and the country
- Its construction begun in 1163 by Paris' bishop, Maurice de Sully, and lasted until 1334 (171 years)
- By the 19th century, it had fallen into disrepair and was to be demolished
- It was author Victor Hugo, who saved the cathedral by leading a successful campaign for its restoration
- Napoleon was crowned Emperor here in 1804

- The cathedral's organ is the largest in France

THINGS TO DO THERE

- Enter the cathedral through the West front
- Walk around and enjoy the unique architecture, history, and atmosphere
- After leaving the cathedral do not forget to walk around it and admire its architecture

TIPS & INSIGHTS

- Audioguide is available for a fee of 5 €
- The Treasury of the cathedral can be visited for a fee of 3 €

[MORE Info and Photos >](#)



10:00-11:00

Tower of Notre Dame Cathedral (6, Parvis Notre-Dame, 75004 Paris)

Opening hours: April 1 - September 30: 10am - 6:30pm, October 1 - March 31: 10am - 5:30pm, Saturdays and Sundays in June, July and August: 10am - 11pm, Jan 1, Nov 1, Nov 11 and Dec 25: Closed • **Admission:** 8 €

THINGS YOU NEED TO KNOW

- Notre Dame is part of UNESCO World Heritage sites
- Its towers are 69 m high, have 397 steps and offer splendid panoramic views of Paris
- Visitors can climb the South tower
- The cathedral's bell, Emmanuel Bell, weighs 13 tonnes and is housed in the South tower

- Enjoy the sweeping panorama of the city from the top

TIPS & INSIGHTS

- Be prepared for queues because only 20-30 people can climb the tower at a time
- Please note that there are about 300 very narrow and slick steps leading to the top. Thus the climb requires some level of fitness

[MORE Info and Photos >](#)



THINGS TO DO THERE

- The stairs leading to the towers can be accessed from outside of the cathedral and are to the left of the main entrance
- Climb the stairs paying attention to the famous gargoyles

11:10-11:55

Sainte-Chapelle (4, boulevard du Palais, 75001 Paris)**Opening hours:** March 1 - October 31: 9:30am - 1pm, November 1 - February 28: 9am - 1pm, Jan 1, May 1, Dec 1 and 25: Closed • **Admission:** 8 €**THINGS YOU NEED TO KNOW**

- Sainte-Chapelle (Holy Chapel) is a Gothic church that dates back to 13th century
- Louis IX (1214-70) commissioned the works
- The church was built to hold a crown of thorns the king believed Christ wore during his crucifixion
- It is considered the most beautiful church in Paris for its magnificent stained-glass windows
- The 15 m high windows show over 1000 Biblical stories from Genesis to the Crucifixion
- They create breathtaking light play in the afternoon light

THINGS TO DO THERE

- Start your visit in the lower chapel that was intended for the servants and lower orders of the Royal Palace

- Continue to the upper chapel that houses the striking stained glass windows that soar up to the gothic, vaulted ceiling

TIPS & INSIGHTS

- Restoration works are in progress until 2011/12 but the chapel is still worth the visit
- If it is possible save the visit for a sunny day. You won't get the whole effect if it is cloudy or rainy
- You can save money by purchasing a combined ticket to Sainte Chapelle and the Conciergerie (11 €)
- You can enjoy a great classical concert in the church. Visit [this site](#) for dates and prices

[MORE Info and Photos >](#)

12:05-12:50

La Conciergerie (2, boulevard du Palais, 75001 Paris)**Opening hours:** Daily: 9:30am - 6pm, Jan 1, May 1 and Dec 25: Closed • **Admission:** 7 €**THINGS YOU NEED TO KNOW**

- La Conciergerie is an imposing Gothic palace built in the beginning of the 14th century on Ile de la Cité
- It was built by Philippe the Fair as a royal palace, later (1391) it was converted into a prison
- It was during the Revolution that it earned its international fame as being a place of terror
- Thousands were held here (incl. Marie Antoinette, Danton, and Robespierre) before their execution by guillotine
- Today you can see prison cells and trial rooms, a medieval kitchen, and a torture chamber

- Other highlight is the magnificently vaulted Hall of the Men-at-Arms (Salle des Gens d'Armes)
- The clock tower (Tour de l'Horloge), built in 1370, houses the first public clock of Paris

THINGS TO DO THERE

- Admire the imposing building
- Enter the palace and visit the museum

TIPS & INSIGHTS

- You can save money by purchasing a Conciergerie-Saint Chapelle combined ticket for 11 €

[MORE Info and Photos >](#)

15:00-16:20

Luxembourg Gardens (boulevard Saint-Michel, 75006 Paris)**THINGS YOU NEED TO KNOW**

- The Luxembourg Gardens (Jardin du Luxembourg) is the second largest park in Paris (25-ha, 60-acre)
- The garden belongs to Luxembourg Palace built for Marie de' Medici, mother of king Louis XIII
- The palace is now the seat of the French Senate and the home of the president of the Senate
- The park is characterized by gravel walkways, beautifully kept lawn, flower beds, and open-air cafés
- The garden features and centers around the beautiful Medici Fountain
- Statues of French queens, saints and copies of the Antique are scattered in the park

- The garden is famous for its calm atmosphere and, thus, a popular destination for relaxation for Parisians

THINGS TO DO THERE

- Enjoy the games, the scenery, the greenery and the atmosphere
- Admire the beautiful palace
- Do not miss the famous Medici Fountain
- Relax on a bench or take a coffee in one of the open-air cafés

TIPS & INSIGHTS

- Get some cheese, a baguette, and some wine, and have a picnic in the park as the locals do

[MORE Info and Photos >](#)

Attraction Details

16:40-17:40

The Panthéon (Place du Panthéon, 75005 Paris)

Opening hours: April 1 - September 30: 10am - 6:30pm, October 1 - March 31: 10am - 6pm, Jan 1, May 1 and Dec 25: Closed • **Admission:** 8 €

**THINGS YOU NEED TO KNOW**

- The Pantheon is the burial place for important citizens of Paris
- Voltaire, Rousseau, Emile Zola, Victor Hugo, Marie Curie, Alexandre Dumas lie here
- It was originally built by Louis XV to celebrate his recovery from a serious disease
- It intended to look like the Pantheon in Rome
- It became a public building in 1885
- The Panthéon houses a Foucault's pendulum, a device that first proved that earth rotates on an axis

THINGS TO DO THERE

- Visit the basement of the building that is a crypt of famous French writers, statesmen and scientists
- Make your way to the first floor housing Foucault's Pendulum
- Climb to the dome galleries for the spectacular panoramic views of Paris

TIPS & INSIGHTS

[MORE Info and Photos >](#)

18:30-19:45

Boat trip on river Seine (Port de la Conférence, Pont de l'Alma, 75008 Paris)**THINGS YOU NEED TO KNOW**

- Touring Paris via the Seine river is a great way to get familiar with many of the city's most stunning monuments, historical buildings, and ornate bridges
- Bateaux Mouches is Paris' most famous boat tour company and is easily recognizable by its enormous decks and bright orange seats
- Bateaux Mouches has a fleet of 14 boats, some of which offer lunch and dinner service
- The tours are narrated in English, French, Spanish, and Italian (brochures available in 17 languages)

- The tour lasts approximately 1 hour and 15 minutes

THINGS TO DO THERE

- Sit back and enjoy the sightseeing
- Sites to be seen include Notre-Dame, the Louvre, the Orsay Museum, Palais de Chaillot, the Eiffel Tower

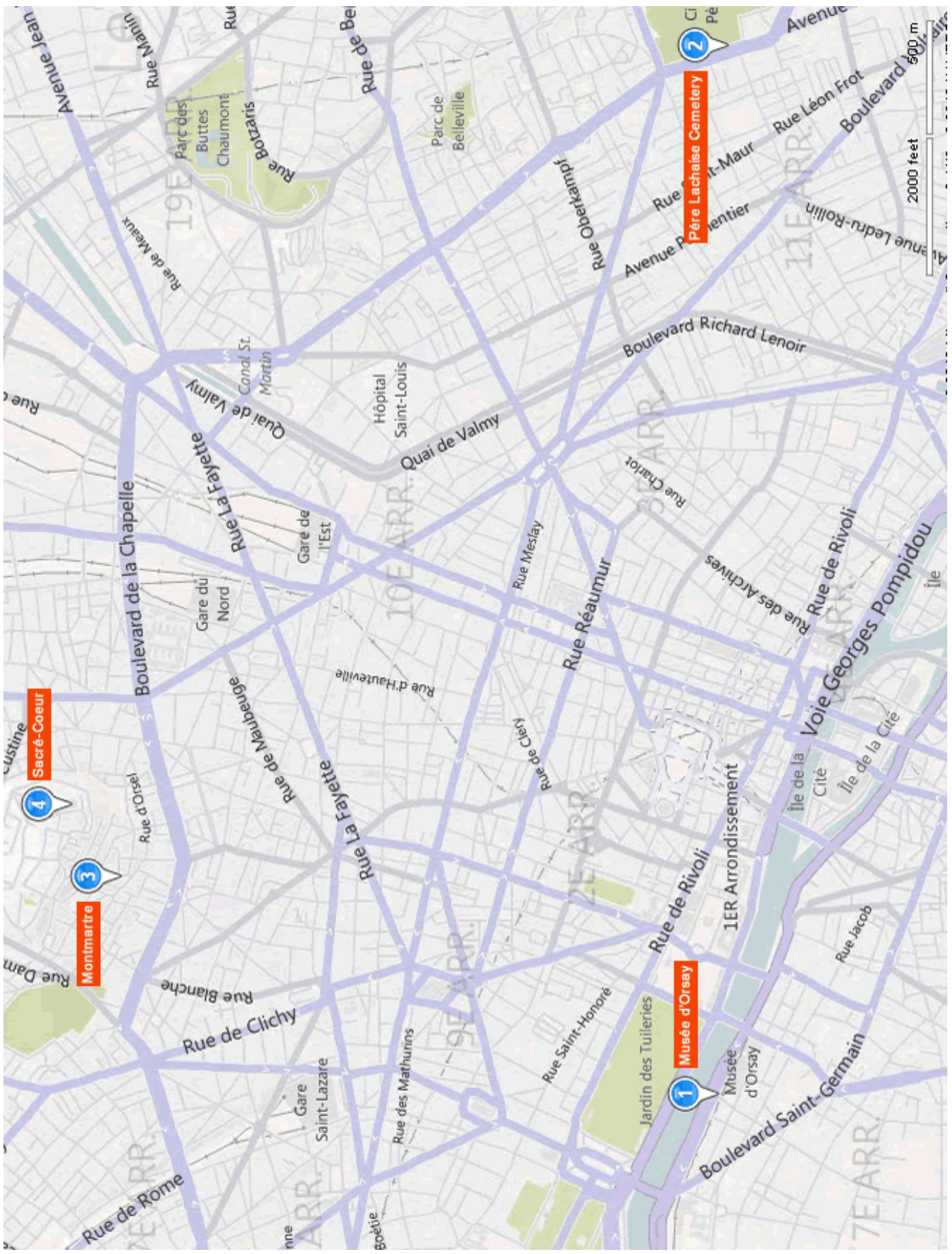
TIPS & INSIGHTS

[MORE Info and Photos >](#)

Overview of Day 4

	<p>LEAVE HOTEL Tested and recommended hotels in Paris ></p> <p>Take RER C to Musée d'Orsay station</p>	
09:00-10:30	<p>Musée d'Orsay —————</p> <p>Take Metro line 12 from Assemblée Nationale station to Pigalle station (Direction: Porte de la Chapelle) Change to Metro line 2 to Philippe Auguste station (Direction: Nation) - 60' in all</p>	<p>Must-see museum for fans of Impressionism</p> <p>Page 23</p>
11:30-13:30	<p>Père Lachaise Cemetery —————</p> <p><i>Lunch time</i> Take Metro line 2 from Philippe Auguste station to Pigalle station (Direction: Porte Dauphine) Change to Metro line 12 to Abbesses station (Direction: Porte de la Chapelle)</p>	<p>The world's most visited cemetery</p> <p>Page 23</p>
15:30-17:30	<p>Montmartre —————</p> <p>Take a walk to Sacré Coeur</p>	<p>Most romantic neighborhood of Paris</p> <p>Page 24</p>
17:30-18:00	<p>Sacré-Coeur —————</p>	<p>One of the most recognized building in Paris</p> <p>Page 24</p>
	<p>END OF DAY 4</p>	

Overview of Day 4

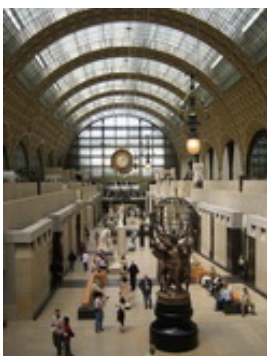


Attraction Details

09:00-10:30

Musée d'Orsay (1, rue de la Légion d'Honneur, 75007 Paris)

Opening hours: Tues, Wed, Fri, Sat, Sun: 9:30am - 6pm, Thursday: 9:30am - 9:45pm, Monday: Closed, May 1, Dec 25, Jan 1: Closed • **Admission:** 8 €



THINGS YOU NEED TO KNOW

- Musée d'Orsay is an art museum on the left bank of the Seine
- The museum opened in 1977 and focuses mainly on French art between 1848 and 1915
- It is best known for the world's largest collection of impressionist and post-impressionist masterpieces
- Monet, Manet, Degas, Renoir, Cézanne, Seurat, Gauguin and Van Gogh paintings are on display
- The stunning building it is housed in used to be a railway station
- The station that was operational until 1939 barely escaped its demolition in the mid-1970s
- Orson Welles' 1962 film, The Trial was shot here

THINGS TO DO THERE

- Pay attention to the impressive interior of the building

- Admire the masterpieces on display (the layout makes it easy to do a self-guided tour)

TIPS & INSIGHTS

- The impressionist and post impressionist paintings are on the ground floor (their original location, the top floor is being renovated)
- No photography is permitted in the museum
- Audioguides are available for 5 €
- Combined tickets are available: Musée d'Orsay-Musée de l'Orangerie for 13 € (this ticket is valid during 4 days), Musée d'Orsay-Musée Rodin for 12 € (both museums must be visited on the same day)

[MORE Info and Photos >](#)

11:30-13:30

Père Lachaise Cemetery (16, rue du Repos, 75020 Paris)

Opening hours: Mid-March - early Nov: 8:30am - 6pm, Mid-Nov - early March: 8:30am - 5:30pm



THINGS YOU NEED TO KNOW

- Père Lachaise Cemetery is the world's most visited cemetery and the largest (50-ha, 109 acres) in the city of Paris
- It takes its name after the confessor of Louis XIV, Jesuit Father Lachaise, who used to live on the site
- Napoleon established a cemetery here in 1804 after the city of Paris purchased the area
- Jim Morrison, the legendary singer of The Doors, is buried here (one of the reason for its popularity)
- Other famous people who rest here are Chopin, Oscar Wilde, Balzac, Edith Piaf, Colette, Molière and Delacroix
- More than 300.000 people are buried in the cemetery

THINGS TO DO THERE

- You will definitely need a map, so print one at home, or take one from the principal entrance of the cemetery (Rue de Repos, "Porte du Repos", Metro station Philippe Auguste - Line 2)
- Visit the tombs of famous people that you are interested in

TIPS & INSIGHTS

- Guided tours are available by advance telephone reservations. (+33 1 40 71 75 60) Price: 6 € (adult)
- Try to go on a sunny day
- Make sure you walk to the cemetery's summit for a great view

[MORE Info and Photos >](#)

Attraction Details

15:30-17:30

Montmartre**THINGS YOU NEED TO KNOW**

- Montmartre is the most romantic neighborhood of Paris
- The district earned its name after its 130 m high hill
- The area is best known for Sacré Coeur Basilica (Sacred Heart) and Moulin Rouge
- Rather than having lots of things to see, it offers a charming area to take a stroll
- Staircase streets, quaint windmills, and sweeping views characterize the area
- The area played an important role in belle époque (a prosperous period in European social history)
- Painters and poets such as Salvador Dalí, Amedeo Modigliani, Claude Monet, Pablo Picasso, Vincent van Gogh used to live here

THINGS TO DO THERE

- Wander around on the narrow, hilly streets of Montmartre
- Fall in love with streets like rue des Abbesses, rue des Trois Frères, and rue des Martyres
- Find the windmills on rue Lepic and the famous Moulin Rouge near Blanche metro station

- Stop at a patisserie for a freshly baked chocolate croissant, a taste of creamy brie or sharp bleu at one of the many fromageries, a succulent orange you'd swear was fresh from the orchard. Then relax in a 'petit café' to enjoy a café au lait while watching people

TIPS & INSIGHTS

- You can book an [excellent free walking tour](#) of Montmartre
- Today the [Moulin Rouge](#) offers musical dance entertainment
- Beware of pickpockets
- Beware of the false portrait 'artists' on Place du Tertre. Some will quote a low price, and after producing something that does not look remotely like you demand a far higher price. It is recommended to watch them first before choosing one

[MORE Info and Photos >](#)

17:30-18:00

Sacré-Coeur (35, rue du Chevalier-de-la-Barre, 75018 Paris)

Opening hours: Daily: 6am - 10:30pm • Admission: Free

**THINGS YOU NEED TO KNOW**

- The Sacré-Coeur is a spectacular white Roman Catholic church on the top of Montmartre hill
- It stands on the highest point in Paris
- Its full name is the Basilica of the Sacred Heart of Jesus of Paris
- The basilica was built 1876-1919 as a memorial to the French soldiers who died in the Franco-Prussian War (1870-71)
- The construction was financed entirely from donations
- It offers breathtaking views both from its front steps and its dome

THINGS TO DO THERE

- After wandering around the small, narrow and hilly streets of Montmartre take the funiculaire to the top of the hill to this staggeringly beautiful basilica
- Enjoy the atmosphere, visit the church and have a walk along the small and narrow streets on top of the hill
- The views over Paris are gorgeous from there

TIPS & INSIGHTS

[MORE Info and Photos >](#)



Don't know which hotel to book?

Ask one of our
Local Hotel Experts to
recommend you a hotel.

[Click here to ask for a FREE hotel recommendation >](#)

Overview of Day 5

	<p>LEAVE HOTEL Tested and recommended hotels in Paris ></p> <p>Take RER C5 to Versailles Rive Gauche station (Direction: VICK or VERO)</p>		
09:00-12:30	<p>Palace of Versailles and Gardens</p> <p>Lunch time Take a walk or take Petit Train to Trianon Palaces</p>	One of the most magnificent palaces in the world	Page 28
13:30-16:30	<p>Trianon Palaces and Marie-Antoinette's Estate</p> <p>Take RER C5 from Versailles Rive Gauche station to Invalides station Change to Metro line 13 to Champs Élysées Clemenceau station (Direction: Saint Denise-Université) Change to Metro line 1 to La Défense station (Direction: La Défense) - 60' in all</p>	Marie-Antoinette's Estate is like walking into a fairy tale	Page 28
17:30-18:15	<p>La Défense</p>	Futuristic district of Paris	Page 29
	END OF DAY 5		



Attraction Details

09:00-12:30

Palace of Versailles and Gardens (Place d'Armes, 78000 Versailles)

Opening hours: April 1 - October 31 - palace: 9am - 6:30pm, April 1 - October 31 - garden: 8am - 8:30pm, November 1 - March 31 - palace: 9am - 5:30pm, November 1 - March 31 - garden: 8am 6pm, Monday: Palace closed, Jan 1, April 5, May 1, Nov 1 and Dec 25: Closed
 • **Admission:** 25 €



THINGS YOU NEED TO KNOW

- Palace of Versailles (Chateau de Versailles) is one of the most extravagant palaces in the world
- Construction started in 1661 and took 50 years (1710) to turn Louis XIII's hunting lodge into this fascinating palace
- The king and his family lived in the Petits Appartements the reason why the king's and queen's rooms are so much overdone
- Highlight of the palace is the unbelievable Hall of Mirrors (71m, 223-ft) designed to reflect sunlight back into the garden to remind people that the Sun King, Louis XIV, lived here
- French royals lived such a decadent life here in a period of deep poverty that their excesses started the Revolution of 1789
- The treaty ending World War I, in 1919, was signed in the Hall of Mirrors
- It is a UNESCO World Heritage site

THINGS TO DO THERE

- Enter the palace and pick up a map and an audio guide (included in the admission fee)

- Visit all the rooms of the palace. The Hall of Mirrors will probably be the highlight of your tour
- Admire the beautiful gardens with lakes, canals, geometric flower beds, long avenues and fountains

TIPS & INSIGHTS

- During low season you can avoid the huge crowds, but the gardens are not so spectacular and the fountains do not work
- Try to purchase your tickets at the tourist bureau in Paris to avoid the huge lines
- Also, if you book online you might be able to avoid the long lines (unfortunately even the preferential access can also have a long line)
- An another way to avoid the long lines is buying your tickets from the vending machines on site (only accept cards)

[MORE Info and Photos >](#)

13:30-16:30

78000 Versailles)

Trianon Palaces and Marie-Antoinette's Estate (Place d'Armes,

Opening hours: April 1 - October 31: 12 noon - 6:30pm, November 1 - March 31: 12 noon - 5:30pm, Monday: Closed, Jan 1, April 5, May 1, Nov 1 and Dec 25: Closed • **Admission:** 10 €

THINGS YOU NEED TO KNOW

- Grand Trianon and Petit Trianon are a larger and a smaller palace next to the Palace of Versailles
- Grand Trianon was commissioned (1687) by Louis XIV to have somewhere to retreat from the strict etiquette of Court life
- Petit Trianon was designed by the order of Louis XV for Madame de Pompadour, his long-term mistress
- Grand Trianon was also the home of Napoleon and his family
- Marie-Antoinette's Estate is much like a country hamlet where Louise XVI's wife found a simple life away from the formality of Court

THINGS TO DO THERE

- To get to the Trianon Palaces, be prepared to walk a lot (around 30 min.) or take the "Petit Train" (return ticket: 6,5 €)
- Start your visit at Marie-Antoinette's Estate
- Continue to the Petit Trianon palace
- Finish your visit at the Grand Trianon palace

TIPS & INSIGHTS

- The Trianon palaces are much less crowded than the main palace
- If you only want to visit the Trianon Palaces and Marie-Antoinette's Estate you can purchase your ticket at these sites

[MORE Info and Photos >](#)



17:30-18:15

La Défense



THINGS YOU NEED TO KNOW

- La Défense is Paris' financial district with skyscrapers
- 14 out of the 72 glass and steel buildings are higher than 150 meters
- It was purposely built to the west of the city to keep the centre free of skyscrapers
- La Défense is Europe's largest purpose-built business district
- More than 150.000 people work here
- Paris' Historical Axis ends here, a 10 km long imaginary line that connects the city's main historical sites (Louvre, Champs-Élysées, Arc de Triomphe, Grande Arche)

- Grande Arche is 100 meter tall and large enough to hold Notre-Dame in the middle

THINGS TO DO THERE

- Leave the metro station and head to the Grande Arche
- Have a look at the surrounding skyscrapers
- Enjoy the view from the steps of the Grande Arche. You can see the all the way down the Champs Elysees past the Arc de Triomphe and to the Louvre

TIPS & INSIGHTS

- Lots of shopping possibilities around

[MORE Info and Photos >](#)



Do you like this guide?

Share your testimonial on

PROMPT GUIDES Facebook page.

[Click here>](#)

Photo credits

Cover page

Cover photo #1: Photo by [CpaKmoi](#)

Cover photo #2: Photo by [Paolo Margari](#)

Cover photo #3: Photo by [cisko](#)

Map

<http://www.bing.com/maps>

Attraction details

Trocadéro Gardens: Photo by [Angel T.](#) • Eiffel Tower: Photo by [BurgTender](#) • Parc du Champ de Mars: Photo by [Steve B Chamberlain](#) • Musée Rodin: Photo by [cisko](#) • Army Museum and Tomb of Napoleon : Photo by [Giorgos Michalogiorgakis](#) • Hotel des Invalides: Photo by [feliven](#) • Grand and Petit Palais: Photo by [HarshLight](#) • Champs-Élysées: Photo by [wallyg](#) • Arc de Triomphe: Photo by [Rik_C](#) • Musée du Louvre: Photo by [Dimitry B](#) • Tuileries Garden: Photo by [levork](#) • Musée de l'Orangerie: Photo by [fmpgoh](#) • Centre Georges Pompidou: Photo by [wallyg](#) • Hotel de Ville: Photo by [Storm Crypt](#) • La Madeleine: Photo by [teachandlearn](#) • Opéra Garnier: Photo by [Istvan](#) • Galeries Lafayette: Photo by [Ghislain Sillaume](#) • Notre Dame Cathedral: Photo by [Amol Hatwar](#) • Tower of Notre Dame Cathedral: Photo by [Chirag D. Shah](#) • Sainte-Chapelle: Photo by [IceNineJon](#) • La Conciergerie: Photo by [bibi0328](#) • Luxembourg Gardens: Photo by [Kewei SHANG](#) • The Panthéon: Photo by [MÃjrcio Cabral de Moura](#) • Boat trip on river Seine: Photo by [Giam](#) • Musée d'Orsay: Photo by [Tracy Elaine](#) • Père Lachaise Cemetery: Photo by [Olivier Bruchez](#) • Montmartre: Photo by [Sarah Parrott](#) • Sacré-Coeur: Photo by [jotpeh](#) • Palace of Versailles and Gardens: Photo by [Amir K.](#) • Trianon Palaces and Marie-Antoinette's Estate: Photo by [kelpenhagen](#) • La Défense: Photo by [Gilles Couteau](#)



Like PromptGuides
on **Facebook** [Click here>](#)

facebook.com/promptguides

PROMPT GUIDES

PromptGuides.com (web)

twitter.com/PromptGuides (twitter)

PromptGuides.com/blog (blog)

facebook.PromptGuides.com (facebook)

flickr.com/photos/PromptGuides (flickr)