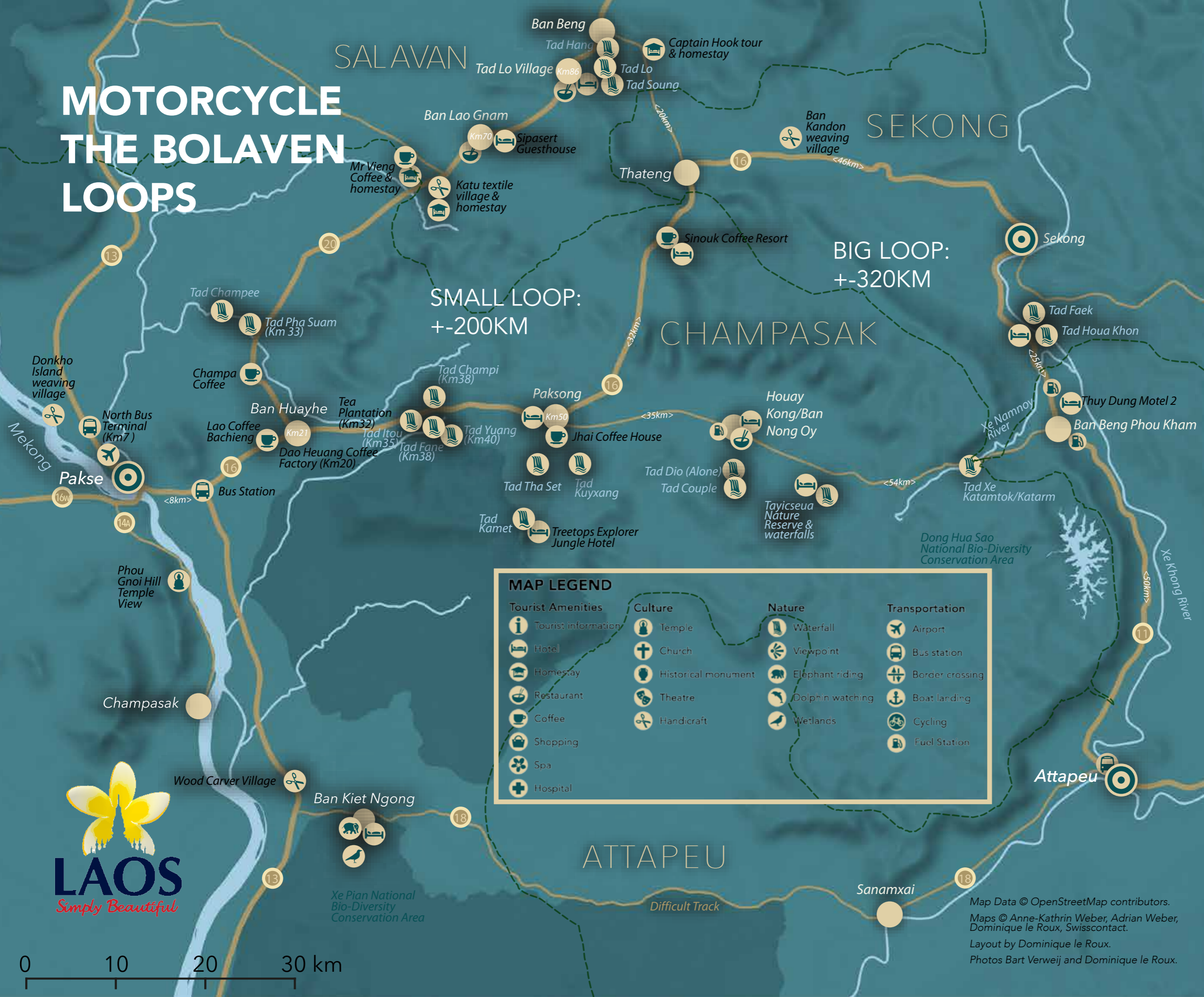
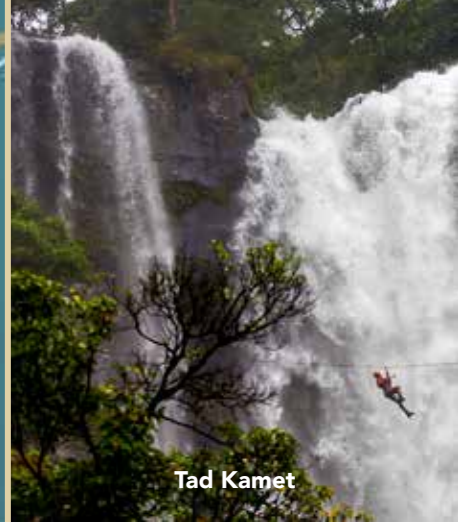
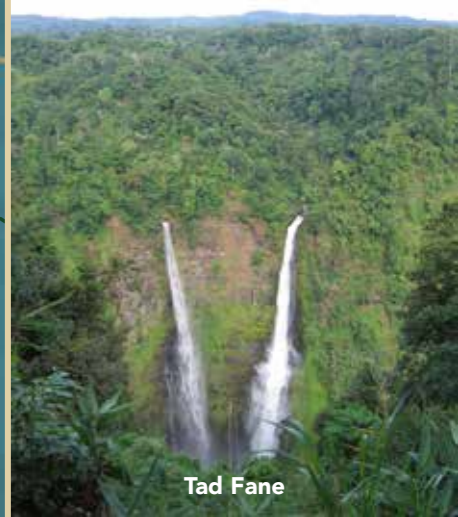
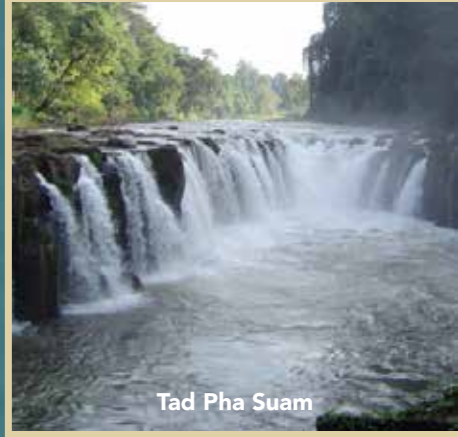


# MOTORCYCLE THE BOLAVEN LOOPS



## FAVORITE CHAMPASAK WATERFALLS



0 10 20 30 km

Map Data © OpenStreetMap contributors.  
Maps © Anne-Kathrin Weber, Adrian Weber,  
Dominique le Roux, Swisscontact.  
Layout by Dominique le Roux.  
Photos Bart Verweij and Dominique le Roux.

## BOLAVEN LOOP ATTRACTIONS

Thanks to the unique geology and climate of the Bolaven Plateau, a large number of rivers cross the highlands, regularly turning into scenic waterfalls on their way. Many of these are now accessible by gravel or paved roads and offer basic to resort-style facilities. You can find petrol stations, restaurants, resorts, guest-houses, homestays, coffee shops and fruit stalls along the route.

### SABAIDEE VALLEY (KM33)

The biggest souvenir shop in Southern Laos, with cosy café serving local coffee, restaurant serving Thai-Chinese-Lao food, and comfortable up-market accommodation ([sabaideevalley.com](http://sabaideevalley.com)).

### TAD ITOU WATERFALL (KM35)

Powerful waterfall set amongst lush tropical vegetation. Picnic facilities at the top; steep stairs to the pool at the bottom of the cascade. E-TU Waterfall Resort ([baanetuwaterfallresort.com](http://baanetuwaterfallresort.com)) offers comfortable bungalows and a restaurant.

### DONG HUA SAO NATIONAL PROTECTED AREA

A significant portion of the Bolaven Plateau is covered by the Don Hua Sao NPA, which extends across 1,100 sq km. Steep to very steep slopes rise to an elevation of around 1,000m with peaks of almost 1,300m.

### TAD FANE (KM38)

Located within the Dong Hua Sao National Protected Area, the Champi and Pak Koot Rivers come together to flow off the plateau as the 120m Tad Fane Waterfall, which divides in two as it spills over the steep cliffs.

### TAD CHAMPI WATERFALL

Opposite the Tad Fane Waterfall access road, follow the access route a few turns and kilometres to a quiet and peaceful retreat into nature. A path to the left of the parking lot goes to the edge of the stream. Possible to walk behind the curtain of water.

### TAD YUANG (KM40)

Explore a waterfall from different perspectives: follow a path to reach the look-out points at the top, middle or bottom of the waterfall. Swimming allowed.

### TAD PA SUAM WATERFALL (33KM NORTH OF PAKSE)

This majestic waterfall gets its name from its rectangular room-like shape – “suam” means “room” in Lao. The 6m high falls flow all year round from the Houay Champy River as it descends across the Bolaven Plateau from the north in Salavan Province.

### BAN HOUAY HOUN VILLAGE, TREKKING & HOMESTAY (KM60)

Discover village handicrafts and local products at **Katu Textiles**, where the staff can also organise a trek in the surrounding area or a basic homestay. **Mr. Vieng Homestay** also offers trekking, homestays and freshly brewed coffee.

### TAD LO – BAN SAEN NANG VILLAGE (KM84)

Surrounded by a selection of basic accommodation and restaurants, the area has several waterfalls including **Tad Hang**, **Tad Lo** and **Tad Suong**. Swimming is allowed in some of the pools and elephants bath just above the Tad Lo waterfall in the evenings. Treks to more waterfalls and ethnic villages available.

### TREE TOP EXPLORER

Overnight jungle adventure accessible only on foot with a trek through coffee plantations and lush forests. The main attraction is a system of ziplines traversing steep gorges within touching distance of the waterfalls and a ‘via ferrata’ for the return ascent.

### EMERGENCY CONTACTS

**Tourist Police, Pakse:** +856 31 212 235, 252 127

**Hospital International Poly Clinic, Pakse:** +856 31 214 712

**Ubongrak-Thonburi Hospital, Ubong Ratchathani (Thailand):**

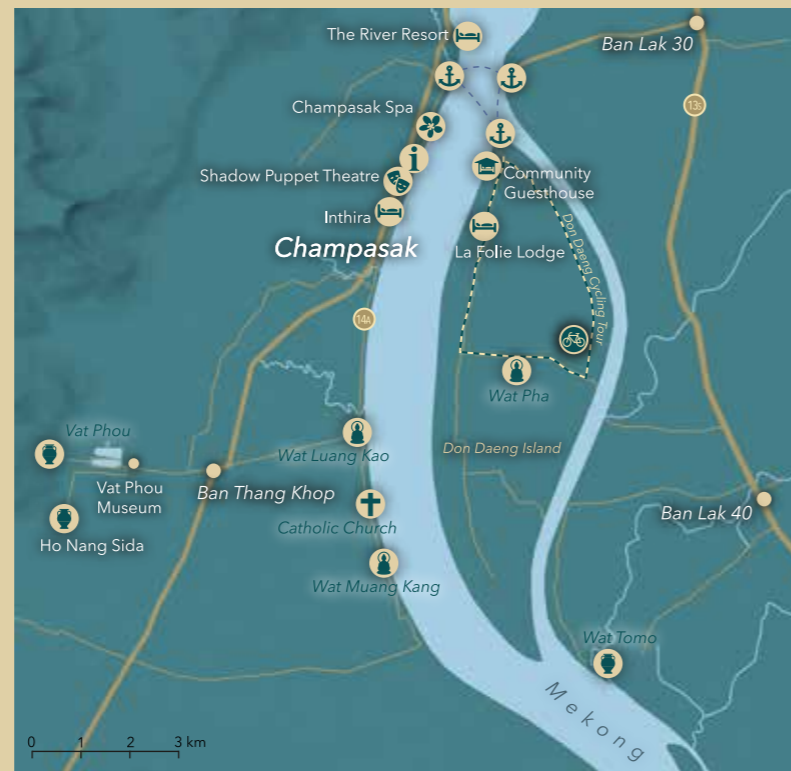
+66 45 260 285, 260 300

**Police:** 191

**Ambulance:** 195



PAKSE, CAPITAL CITY OF CHAMPASAK PROVINCE



CHAMPASAK TOWN AND SURROUNDS

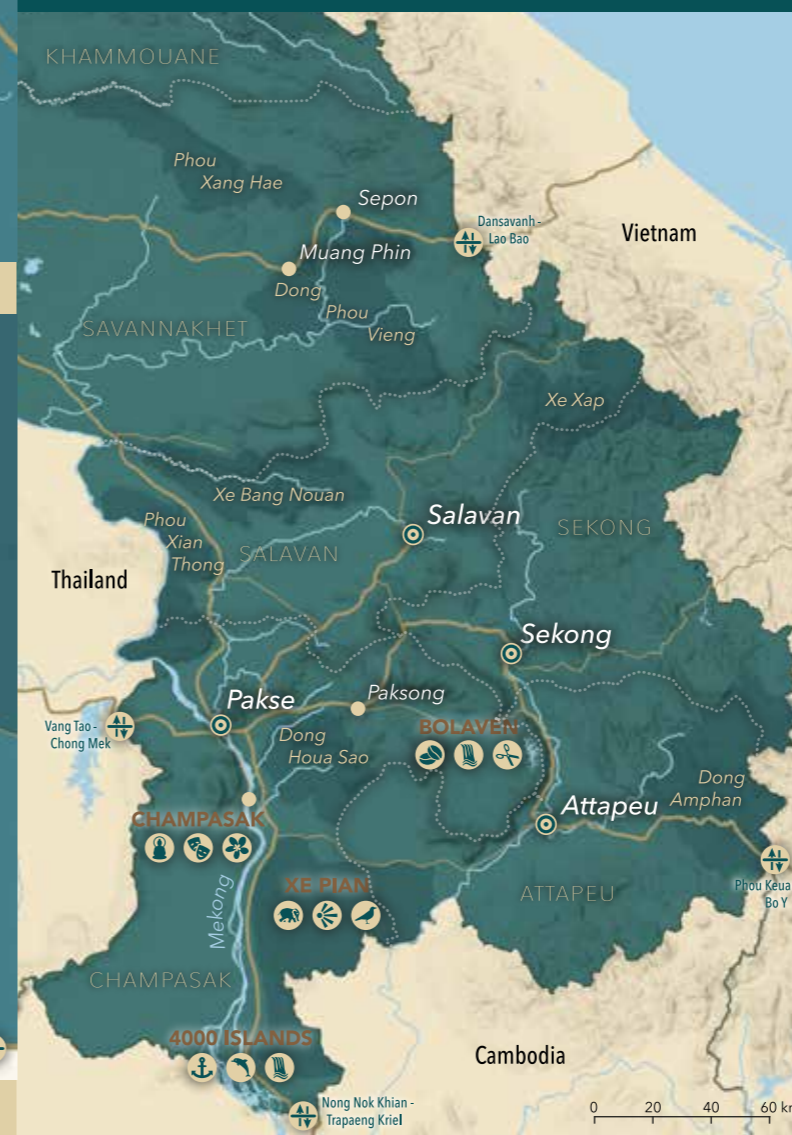


4,000 ISLANDS/SI PHAN DON



# CHAMPASAK and SOUTHERN LAOS

Charming by nature



## WELCOME TO SOUTHERN LAOS!

Less travelled routes invite you to explore the culture, nature, and a refreshingly slower pace of life in Southern Laos. Explore the stunning waterfalls of the **Bolaven Plateau**, and learn how coffee is grown and processed on the rich volcanic soils. Enjoy an easy trek to an ethnic village or go for an adrenaline-fuelled adventure, zip-lining across waterfalls and walking high up above the jungle floor, through the forest canopy.

**Vat Phou**, an ancient Khmer temple complex and UNESCO World Heritage Site, is located in beautiful surroundings, while the mighty **Mekong River** – a true lifeline for many people living on the plains – not only offers the exotic **Four Thousand Islands** and SE Asia’s biggest waterfall, but also opportunities to discover traditional riverside village ways of life. Last but not least, discover the cultural and historic treasures of **Pakse**, Southern Laos’ main city, where the **Sedone River** flows into the mighty Mekong River and where modernity meets with local tradition.

### KEY CHAMPASAK ATTRACTIONS

#### BAN SAPHAI AND DON KHO ISLAND (18KM NORTH OF PAKSE)

The villages on the banks of the Mekong and the island just a short boat ride from the mainland, are known for their silk weaving and textiles.

#### BAN DON KHOR AND WAT CHOMPET (10KM NORTH OF PAKSE)

Just outside Wat Chompset, you can meet the Buddha stone carvers and then get a closer look at the big golden Buddha of Wat Chompset. You can even go inside.

#### VAT PHOU (10KM FROM CHAMPASAK TOWN)

The unique layout of Khmer architecture found at Vat Phou gained it the UNESCO World Heritage label in 2001. Although it is a small site compared to Angkor Wat, it is one of the world’s best examples of the planning and engineering of a landscape that reflects the religious beliefs and economic approaches of both ancient Khmer architecture and the Hindu religion.

#### DON DAENG ISLAND

Just across the Mekong River from Champasak Town, the island is an ideal location for walks and bicycle rides on its country path, which can be followed around the tree-shaded island.

#### KHONG PHAPHENG WATERFALL (150KM SOUTH OF PAKSE)

Locals often refer to Khong Phapheng waterfall as the jewel or the pearl of the Mekong, as it is SE Asia’s largest waterfall.

#### 4,000 ISLANDS/SI PHAN DON

Located in the Mekong River just north of the Cambodian border Cambodia, Si Phan Don is an important wetland habitat for wildlife, while Don Khong, the largest island, is a popular habitat for tourists needing relaxation and recovery.

**Champasak Tourist Information:** +856 31 212 021, 252 667

**Salavan Tourist Information:** +856 34 211 528

[www.southern-laos.com](http://www.southern-laos.com)